

# seaPro

## *User Guide*

# PLEASE READ THIS FIRST!

## Insurance

The security dongle has significant value and is the key to your system and your charts. It is not possible to replace lost or stolen dongles without charge for the FULL replacement value of both software and charts. **YOU MUST MAKE SURE THAT YOUR DONGLE IS INSURED AGAINST THESE RISKS.**

## This Manual

This manual has been designed to get you up and running with the basic functions of seaPro and seaPro Lite .

It is designed to run in conjunction with the tutorials and help files within seaPro and the technical helps to be found on our web site ([www.euronav.co.uk](http://www.euronav.co.uk)) that deal with some of the more advanced functions.

Please use the manual, help and website files before contacting us.

For the use of this system a general knowledge of PCs and their operation is assumed. For information about the operation of your PC and its capabilities please refer to a PC specialist.

## Disclaimer

**This product is designed to ease and speed up navigational calculations. It is not designed to replace official printed-paper charts or the navigator's responsibility to exercise common prudence. Neither Euronav Ltd nor their distributors accept responsibility or liability either to the product user or their estate for any accident, loss, injury, or damage whatsoever arising out of the use of or inability to use this product. You may be required by law to carry suitable paper charts for the passage intended.**

**This product uses data copyrighted to third parties. This copyright must at all times be respected, failure to do so may result in civil or criminal prosecution against you.**

# Contents

- Display overview	5
- Main toolbar	6
- Toolbars	7
- Night mode	7
- Chart windows	7
- Panel	8
- Zooming and panning	9
- Routes and route planning	10
- Tides	11
- Weather & weather routing	12
- Measuring	13
- AIS	14
- RADAR	15

## Installation & Set Up

Please see the **seaPro Quick Start Guide** for set up information.

## Technical Support

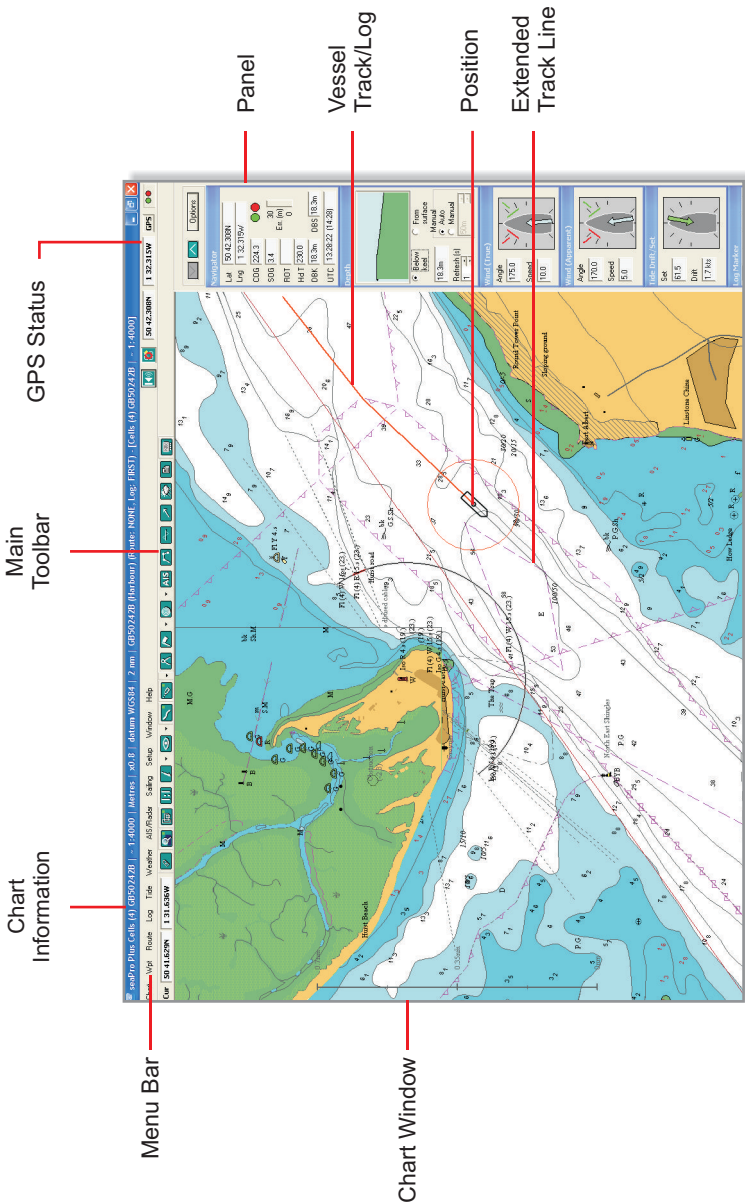
Additional help and instructions can be found within seaPro via the **Help** menu. If you require any further technical assistance either:

- 1: See page 16, **Troubleshooting**
- 2: contact your dealer
- 3: visit - [www.euronav.co.uk](http://www.euronav.co.uk)
- 4: email - [techsupport@euronav.co.uk](mailto:techsupport@euronav.co.uk)

Keep your seaPro up to date by clicking on **Help** then **Check for updates** in seaPro or by downloading updates directly from the Euronav web site.



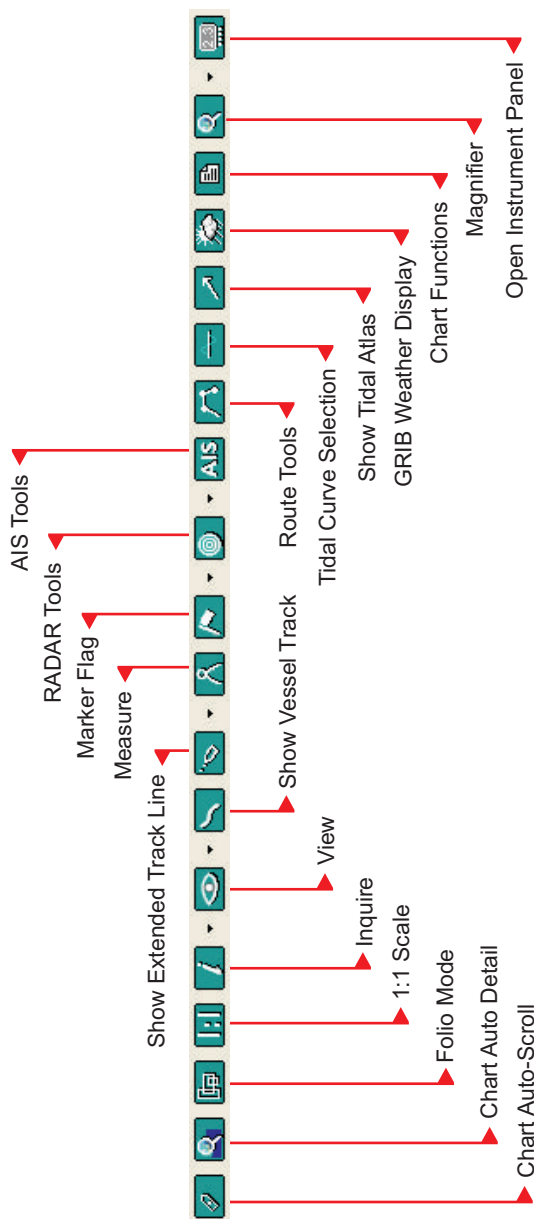
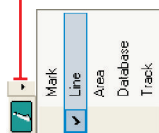
# Display Overview



# Main Toolbar

6

Where an icon has a down arrow next to it, click it to reveal a menu with more functions



## Toolbars

### Opening Toolbars

Many of the toolbars in seaPro will automatically appear when a particular function is selected (eg tidal streams), however it is possible to open the toolbars at any time you wish by either:

- a) Click on **Setup** then **Toolbars**
- b) Right click on the menu bar at the top

### Docking Toolbars

The main toolbar and cursor position indicator are fixed at the top of the chart window but all other toolbars maybe docked at either the top or bottom of the screen for convenience.

## Night Mode

seaPro has a built in feature to dim the screen for use at dusk or at night time. Simply click on **Chart** then **Colors...** and select the display mode you wish.



There are parts of the Windows operating system that seaPro can not dim. For best results set the Windows taskbar to autohide and the Windows desktop theme to 'Windows Classic'.

## Charts and Chart Windows

Select **Chart** then **Settings** to enhance/alter your display of charts. Click on the **Chart Directories** tab to switch on and off different chart types to view.

seaPro can display many chart windows showing different views. Click on **Chart** then **New Window** for a chart window on your current monitor or **New Window (Multi-monitor)** if you would like to put the chart window on either a separate monitor or to occupy the full screen.

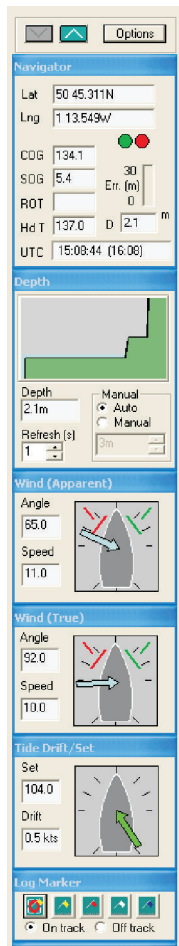
## Panel



- Click this button to toggle the panel on and off.

To change the information displayed in the Panel click the **Options** button.

NOTE: seaPro will only show the information from the instruments that are connected to your PC.



The main items you can see in the Panel are:

### Navigator

Provides your GPS information.

### Plan

Gives you original information from your planned route.

### Actual

Updated information on your planned route against your actual position/speed/direction.

### Target Marker

If a target marker is dropped from using the icon bar your distance and bearing to the marker is constantly updated.

Other items that you can choose to display are:

### Wind Apparent and True

### Tide/Current Indicator

### Log

### ARPA Radar Target TCPA/CPA

### AIS Target TCPA/CPA

### Depth

### Temperature

### Log Marker

### Data List

You can scroll through the panel items by either the toggle buttons, the scroll wheel on your mouse or by clicking and dragging.



## Zooming and Panning



### Grab & Drag

Zoom and pan around your charts using the grab and drag (**hand icon**). Simply click and hold the left mouse button anywhere on the chart and drag it around. A single left click zooms in and a right click zooms out.

### Classic Box Draw Method

#### To zoom in



- 1: Hold down the left mouse button and draw a box by moving the mouse cursor up and right over the area of interest.
- 2: When you have outlined the area you want to zoom into, release the left mouse button.

#### To zoom out



- 1: Click once over the chart window with the right mouse button and seaPro will zoom out one level.

### Panning

- 1: Place your mouse cursor near the edge of the Chart window in the direction you wish to pan, it will turn to a large blue arrow. Left click when you see the large blue arrow to pan in that direction.

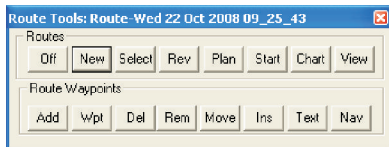
You can also move around the chart using the arrow keys on your keyboard or the icons on the **Zoom / Pan** toolbar (click on **Setup** then select **Toolbars**, tick **Zoom/Pan Bar**).

# Routes and Route Planning

## Entering a Route



- Click this button to open **Route Tools**.



- 1: Select **New**.
- 2: Enter your route name and click **OK**.
- 3: Click **Yes** to start a new log for the route.
- 4: Insert waypoints by one of two ways:
  - a) Select **Add** from **Route Tools** then left click on the chart to place waypoints. Right click when done.
  - b) Select **Wpt** from **Route Tools**, pick a waypoint from the waypoint list and click **Add**. When done click **OK**.

## Planning a Route

- 1: Select **Plan** from **Route Tools**.
- 2: Enter start date and time of your departure in the *Start Date and Time* window.
- 3: Enter your vessel speed.
- 4: Click on **Calculate Plan**.

## Finding Best Departure Time

- 1: Select **Plan** from the **Route Tools**.
- 2: Enter the desired date of departure in the *Start Date and Time* window.
- 3: Enter predicted boat speed.
- 4: Click **Build Graph**.

## To Activate the Route

Click the **Start** button on **Route Tools** to activate the route and send any data to your instruments/autopilot.

# Tides

## Create Tidal Atlas

- 1: Select **Chart** from the menu bar and select **Folio**.
- 2: Click on Create **Tidal Atlas**.
- 3: Click **OK** when done.

## Viewing the Tidal Atlas



- Click this button to show the tidal streams and open the Tidal Atlas toolbar.

Use the Tidal Atlas Toolbar to:

- a) View tides at a particular time.
- b) View tides updated in real time.
- c) Estimate rate and direction of the tide at a specific point.
- d) Show the area considered to be affected by an individual tidal diamond.



Because the Tidal Atlas is based on tidal prediction there is no guarantee as to the accuracy of the tidal database used within seaPro. The prediction can be dramatically affected by changes in the atmospheric pressure and other weather conditions.

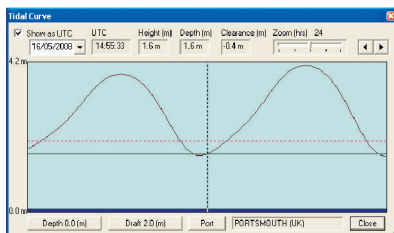
## Viewing the Tidal Curve Window



- Click this button to select a tidal station.

Use the cross hairs to select a tidal station indicated by a cyan square on your chart.

Use the mouse to drag the cross hairs across the graph to determine a tidal height at a particular time.



## Weather



- Click this button to open the **GRIB weather toolbar**

- 1: From the GRIB toolbar click the open icon (furthest icon on the left of the toolbar).
- 2: Find the GRIB file you have downloaded select it and click **Open**.



To find GRIB weather files go to the Euronav website ([www.euronav.co.uk](http://www.euronav.co.uk)) and click the **Weather** link.

## Weather Routing

- 1: Select **Sailing** from the menu bar.
- 2: Select **Weather routing**.
- 3: Click on **Set Start/End points**.
- 4: Left click where you want to start and end your route then click **Next**.
- 5: Enter the weather information by either:
  - a) Using a GRIB weather file downloaded from the internet.
  - b) Enter the weather forecast manually in the boxes provided.

Click **Next** when done.

- 6: Enter the time interval at which you want seaPro to read the wind and tide.
- 7: Enter the arrival distance. seaPro will endeavour to find the best route to the "arrival circle".
- 8: Set the start date and time.
- 9: Click **Plan**.
- 10: Click **Next**.
- 11: Your best route with wind indicators will be shown on your chart.



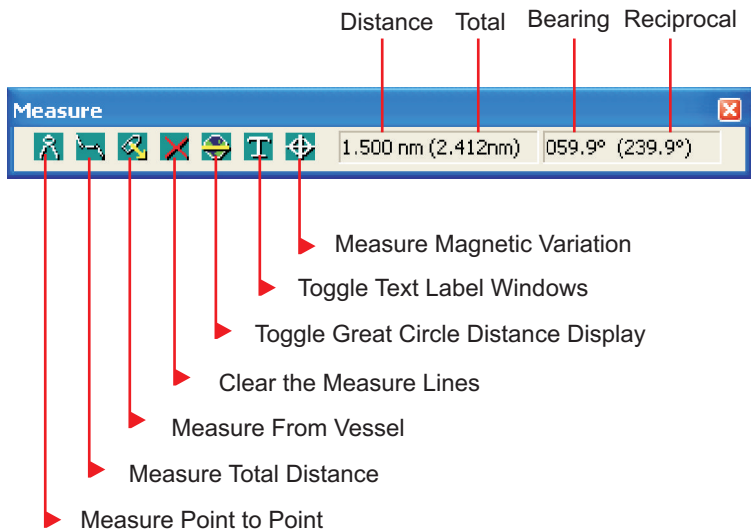
Please make sure the time taken to complete your voyage is less than the time span of your GRIB file. seaPro can't complete its calculations if there is not sufficient weather data and will show an error message if this is the case.

## Measuring

You can use your seaPro to measure distances from point to point or for a total distance over many points.



- Click this button to open the **Measure** toolbar



To measure select the appropriate measure tool (**Measure**, **Measure total distance**, **Measure from vessel** etc.). Your mouse pointer should then turn into a 'cross hairs' when moved over the chart window. Left click to place points and if using **Measure Total Distance** right click to finish.

The information on your screen can be toggled on and off using the **Toggle Text Label** button.

To measure a great circle first put in a normal point to point measure then click on the **Toggle Great Circle Distance Display** button

Magnetic variation can be seen by clicking on the **Measure Magnetic Variation** button and clicking any chosen point within the chart window.

## AIS (Automatic Identification system)

seaPro has the built in capability to interface with a suitable AIS receiver, such as Euronav's AI3000.



- Click this button to open the AIS toolbar



Use the **select vessel** button (on the far left) on the toolbar to select a vessel to interrogate, or use the other buttons to use other AIS functions within seaPro.

Setup of the AIS functionality within seaPro is easy, simply click the **Settings** button on the AIS toolbar (last button on the right) and set up all the functionality of AIS in seaPro.

## CPA/TCPA

Potential collisions will be alerted to you by circling the 'dangerous' vessels with a red circle and the PC emitting a warning tone. Settings for collision warnings can be set by clicking the **Settings** button on the AIS toolbar.

## Troubleshoot AIS

Once you have set up your AIS receiver and made sure that the AIS functionality is turned on in seaPro (enter **Setup** from the AIS toolbar then tick **Enable UAIS**) you will start to see AIS targets appearing on your charts. If the targets do not appear check:

- 1) There are AIS equipped vessels within AIS range of your antenna and that they are within your 'line of sight'.
- 2) There is power to your AIS receiver and it is on.
- 3) Your VHF antenna is of the right type, mounted correctly and working.
- 4) The correct serial port is set up within seaPro to receive the NMEA data from your AIS receiver (click **Setup** then **Serial Ports** to do this).

# RADAR

## ARPA RADAR



- Click here to open the RADAR toolbar

With seaPro connected to your ARPA radar the radar targets will be shown overlayed on your chart window.

Using the RADAR toolbar you can select a particular vessel to follow, and pull up a list of targets with their TCPA/CPA to help avoid collision.

## RADARpc

Connecting the RADARpc is simple.

Once the radar black box has been set up and plugged into the ethernet port of your PC start seaPro.

Click on **AIS/Radar** and select **Radar Settings...** Tick **Enable PC RADAR** then restart seaPro.

seaPro will automatically search and find the RADARpc when seaPro is started.



- The PC RADAR icon will now be on your main toolbar. Click this to open the radar settings and adjustments. Click the **TX** button to start the radar.

seaPro's implementation of RADARpc is a flexible and has several display modes:

Full window multi monitor - Click the RADARpc icon then click the **Image** button.

Separate window in seaPro - Click on **AIS/RADAR** then click on **PC RADAR Window**.

Overlayed image on chart - Within the PC RADAR settings window tick **Show on chart**. The PC RADAR function can auto range to match your zoom level, simply tick **Auto range** to activate this function.

## Troubleshooting

Should you encounter any problems with the installation or use of seaPro, don't panic, help is at hand.

Technical support is available in the form of online help, within the seaPro program (just click on **Help**, it's what it's there for), the technical pages on our web site ([www.euronav.co.uk](http://www.euronav.co.uk)) or you can email us at: **techsupport@euronav.co.uk**



Make sure your seaPro is up to date with downloads from our web site **[www.euronav.co.uk](http://www.euronav.co.uk)** or in seaPro click on **Help** then **Check for updates**.

### seaPro restarts unexpectedly

If seaPro does not install properly, is slow to zoom and pan, crashes when you build folio or when a menu item is selected, etc, your computer may be at fault.

You may need to turn down (or switch off) your computers Hardware Acceleration to do this in Windows XP do the following:

- 1: Shut down all programs you may be running.
- 2: Right click the mouse on the desktop and select **Properties** from the drop down menu.
- 3: From the Display Properties window select the **Settings** tab.
- 4: Click the **Advanced** button.
- 5: Select the **Troubleshoot** tab from the windows that opens.
- 6: Adjust the **Hardware Acceleration** as desired then click **OK**.

Note: It is best to start with the Hardware Acceleration on the lowest setting.

These instruction may differ for Windows 2000 or Vista please contact your PC supplier for more information if required.

If this solves the problem then you have a bad or old graphics card driver on your PC. Contact your PC supplier or manufacturer for advice on possible updates and fixes.

Note: For a lot of programs the graphics acceleration setting will make little difference to their PC performance



## **How do I get back to my vessel's location?**

This is controlled by the chart auto-scroll button (see page 15 for the location of this button).

When it is 'on' a green dot will appear in the corner of the button and seaPro will follow your boat.

## **I can't zoom or pan away from my vessel's position**

This is controlled by the chart auto-scroll button (see page 15 for the location of this button).

Switch this button to 'off', you can then zoom and pan around your charts with complete freedom.

## **When I zoom/pan my chart keeps zooming out to a much smaller scale chart**

When you're zooming/panning, you are exceeding the limits of the chart you are using, i.e. the area you are moving to, cannot be completely shown by the chart you are on. In these cases seaPro will automatically offer a chart which can cover the entire area you have selected.

To rectify this either:

- a) Switch "Folio mode" off. Use the Folio Mode icon on the main toolbar.
- b) Ensure that, when zooming into an area, you draw the zoom box within the magenta limits of that chart.
- c) Increase your chart coverage in that area, to reduce the chances of being moved on to an unsuitably large-scale chart.

## **I can't see any tidal arrows**

This is because either there are no tidal arrows in the area you are looking or the tidal atlas is out of date.

If your tidal atlas is out of date please visit the Euronav website ([www.euronav.co.uk](http://www.euronav.co.uk)) for information and downloads of the latest tidal data.

## I can't see my vessel

This can be caused by:

- a) GPS incorrectly setup.
- b) seaPro incorrectly setup.
- c) GPS incorrectly wired to the computer.

How to rectify:

Find the interface or communications setup screen on your GPS. Ensure that the GPS is set to NMEA to NMEA. seaPro uses NMEA 0183, recommended baud rate 4800.

In seaPro go to **Setup**, then click **Serial Ports...** . Click on **AUTO SCAN** to locate the GPS and set its correct com port.

## I can't see my charts

This is caused by either:

- a) Charts not being installed correctly
- b) Folio mode being turned off

How to rectify:

Make sure the charts have been installed then in seaPro click on **Chart** then **Folio**. Make sure the appropriate chart folder is ticked (if in doubt tick them all) and click **Create folio**. When done click **Close**. If your charts are still not visible to you click on the folio mode icon on the main toolbar (it should have a green dot in the corner).

## My charts are almost black with text and detail

This is caused by:

- a) Auto-detail mode is switched off.

How to rectify:

Click on the Auto Detail icon on the main toolbar, it's the one that looks like a magnifying glass. In normal operation it will have a green dot in the corner.



