

# seaPro Pilot

*the ultimate carry on board navigation system*

seaPro Pilot provides a powerful and easy to use carry on board system that interfaces to AIS transponders, GPS and ship-board sensors. Combined with a ruggedized laptop, official charts and wireless connectivity to a ship's pilot plug, seaPro Pilot provides an easily portable navigation station.



*seaPro Pilot System with optional Panasonic CF-52 toughbook and wireless pilot plug adapter*

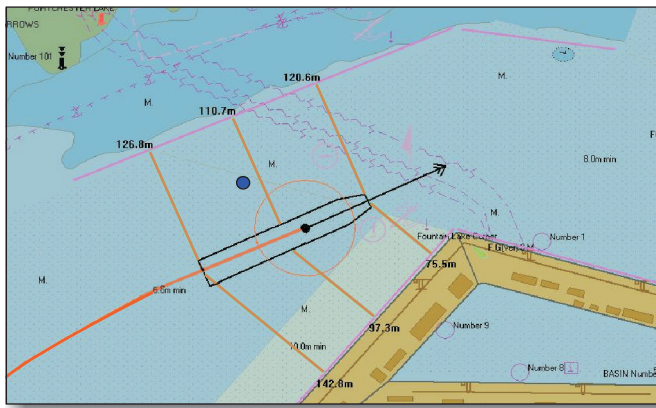
## Key Benefits

### **Improved safety**

- Real-time navigation
- 'At a glance' situation awareness
- Overlay of AIS targets on charts
- Built in AIS fault diagnosis
- Automatic 'look ahead' view for maximum clarity
- Weather overlays
- Electronic chart corrections either on CD or internet download
- Man overboard marker

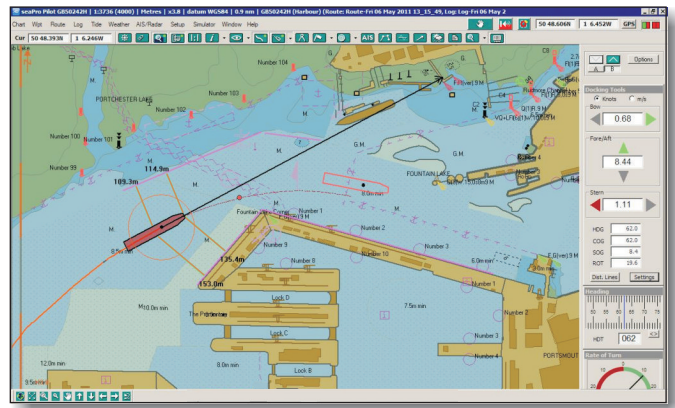
### **Increased operational efficiency**

- Easy to use system interface
- Practical route planning tools enable passage plans to be calculated quickly or checked
- Graphical playback of recorded data
- Tidal arrow display
- Communicate passage plans, logs, weather data and chart updates electronically
- Data logging of position, track and AIS targets
- Own vessel AIS position check with secondary position fix



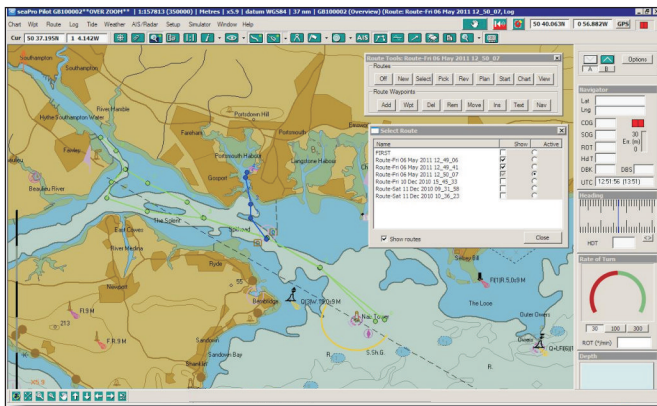
### GPS with secondary fix

Real time position and heading are displayed on the chart. A secondary GPS can be used to check GPS accuracy.



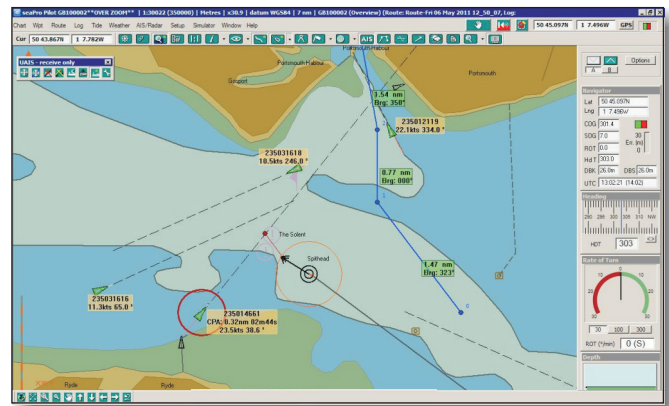
### Docking tools

The docking tools allow the user to set up distance lines and display a predicted position image.



### Routes and route selection

Routes are easy to create. Multiple routes can be displayed, the user can quickly select which one to use.



### AIS Display

seaPro Pilot can overlay the AIS targets. CPA and TCPA alarms can also be set up.

### Other features

**Pilot interface** - The pilot interface allows easy and fast setup of the system, including getting vessel data from the AIS transponder.

**Simple vessel set up** - Gather information from the AIS or enter it manually to quickly set up a vessels attributes. This information is stored for quick and easy recall.

**Multiple panel options** - Customise the instrument panels to give you the information you want. Choose from a range of instruments and position them to your needs.

**Weather** - Weather data via GRIB files can be opened within seaPro to display animated weather forecasts.

**Vessel track** - Stored as a log and can be used to show previous vessel movements.

**ROT and Heading indicators** - Clear panel instruments keep the pilot updated of real time vessel information.

**Look ahead** - seaPro provides the option of both relative motion and true motion modes.

**Overlays** - Add marks, text and notes (including images) to the display. Multiple overlays can be displayed.

### Supported Chart Formats

- S57 (ENC) with S-52 display
- Livecharts
- ARCS
- BSB
- GeoTIFF

### Options

**Toughbook laptop** - Rugged yet powerful, featuring a bright screen and long battery life it is the perfect choice for this system.

**Marimatech CAT ROT** - The E-Sea Fix CAT ROT is a pilot unit designed to connect to a ship AIS pilot plug and transmit data via Wi-Fi to the pilot's notebook. The CAT ROT has an integrated rate sensor providing a valid Rate-Of-Turn (ROT).

**SEAMate 1a** - Provides NMEA data wirelessly to the PC from the ship's pilot plug. It can also work as an independent GPS.

**Admiralty Total Tide** - The world's most comprehensive tidal prediction program providing fast accurate tidal height and tidal stream predictions from the UKHO. Interfaces directly into seaPro Pilot.