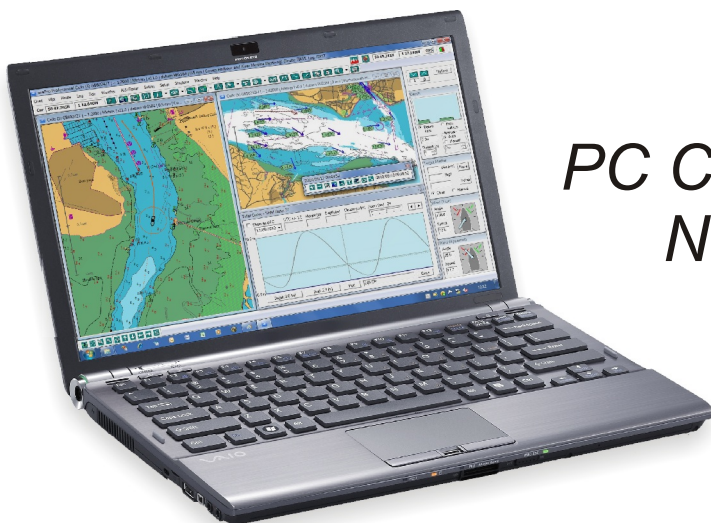


seaPro

Making Navigation Easy



PC Charting & Navigation Systems

For Windows XP, Vista and 7

*The planning and on-board navigation tool**

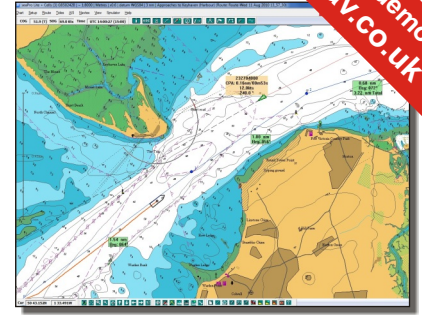
- Display your position in real time on a chart
- Full support for AIS
- Automatically selects the best chart available for navigation
- Compatible with major vector and raster chart formats
- Keeps a log of position and track
- Controls an autopilot
- Check the weather with GRIB overlay
- Connects with Koden RADARpc for radar overlays
- Calculates the best departure time and fastest passage for a journey
- Displays tidal curves and streams

* Features dependent on seaPro version - see overleaf for main features or visit our web site for full product specification and demo download.

seaPro Lite

This easy-to-use system combines high quality vector Livecharts with practical navigation functionality.

- Simple set up
- Route planning and monitoring
- Autopilot control
- Extended track line
- NAVTEX interface
- Connects to GPS
- AIS display
- Measure tools and chart overlay
- Tidal curve functions
- Includes vector Livecharts



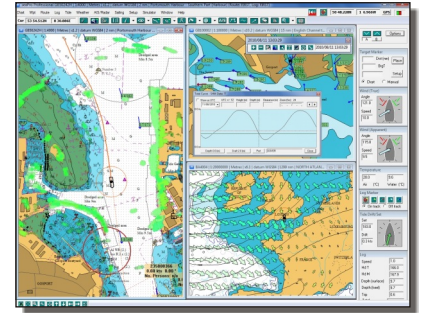
seaPro Lite

seaPro Lite Navionics

Use the Navionics charts from your plotter with this special edition of seaPro Lite that allows you to use Navionics charts. Includes a Navionics card reader.

seaPro Lite +

seaPro Lite+ has all the great navigation features of seaPro Lite and also allows you to use both Vector and Raster charts from major chart suppliers.

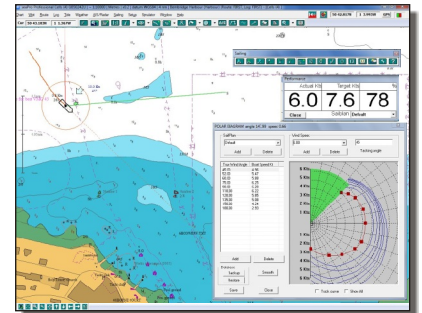


seaPro Standard

seaPro Standard

The highly acclaimed seaPro Standard includes all the functions of Lite+ and a lot more, having been designed to offer the best navigation and chart plotting tools.

- Tidal passage planning
- Tidal curves and streams display
- GRIB weather display
- Instrument panel
- Fuel calculations
- AIS display
- Upload/download waypoints
- Weather routing
- RADARpc interface with MARPA
- Position and track logging

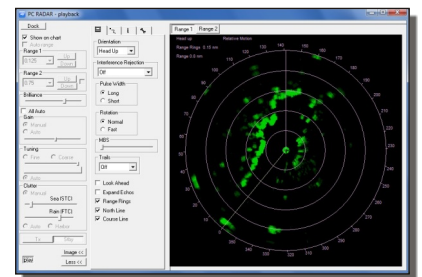


seaPro Sailing

seaPro Performance Sailing

seaPro Performance Sailing includes all the functionality of Standard plus extra features for cruise and race sailors who want to get more out of their yachts.

- Visual geographic wind direction
- Tacking angles
- Laylines
- Performance meter
- Wind on next leg indicator
- Polar diagram auto update
- Race planning tools
- Enhanced weather routing
- Race instruments panel
- Data logging



RADARpc window

seaPro Plus

The advanced seaPro Plus offers all the features of seaPro Standard plus a host of additional functions suited for the more dedicated navigator.

- Overzoom
- Enhanced overlays and databases
- Great circle route planning
- Enhanced logging
- Search and rescue tools
- Network data server

seaPro supports major chart formats¹ including Livechart, Navionics², ARCS, Seafarer, NZ Mariner, NVV, BSB and BSB4 charts



1 - seaPro Lite uses Livecharts only

2 - Navionics is available with additional module