

seaPro

Fishing

User Manual

Disclaimer

This product is designed to ease and speed up navigational calculations. It is not designed to replace official printed paper charts, nor the navigators responsibility to exercise common prudence.

Neither Euronav, nor their distributors accept responsibility or liability either to the product user or their estate for any accident, loss, injury or damage whatsoever arising out of the use or of liability to use this product. You may be required by law to carry suitable paper charts for the passage intended.

This product uses data copyrighted to third parties. This copyright must at all times be respected; failure to do so may result in civil or criminal prosecution against you.

Insurance

The security device (or dongle) allows you to access seaPro and the Electronic charts you have brought. It has significant value since it represents the replacement cost of seaPro and all the electronic charts, which require its presence.

The dongle requires no special attention over and above the normal caution you would exercise when taking a valuable device aboard a vessel, but you should protect it against immersion, physical and electrical damage.

It is not possible to replace lost or stolen dongles without charge for the full replacement value of both software and charts, therefore in addition to exercising due care against the risk of theft and loss, you must make sure that your dongle is insured against these risks. Contact your boat insurer for details of cover available.

To help you when upgrading your system or ordering more charts record your dongle number below:

Dongle Serial Number:

We strongly advise that you keep all original paperwork, installation CD's and chart release codes together. This will enable you to simply re-install programs and charts in the event of you losing your computer or experiencing a hard-drive failure.

Introduction

Welcome

Thank you for choosing seaPro.

SeaPro is advanced and powerful charting and navigation system that combines paper-quality charting with practical navigation features including tidal planning, position monitoring and navigation management.

About this manual

This manual assumes you have ;

- A working knowledge of navigation and are capable of navigating using traditional means
- Reasonable knowledge of Microsoft Windows operating systems

What seaPro will not do for you ;

- It will not take away your responsibility or decision making for navigation.
- It does not give any more information than could be obtained by conventional means.
- It does not remove the need for checking that your passage plans are safe.
- It does not remove the need to keep a proper log book.
- It does not remove the need to keep paper charts for the journeys planned.

Please take time to read this manual so that you get maximum benefit from seaPro.

seaPro Fishing Facilities

The facilities offered in seaPro Fishing version have been tailored to meets the needs of the fishing community. This system is a must for all fishing boats as well as fleet managers as it allows you to record valuable data, view the boats past tracks and activities and monitor catches and fishing areas. Ultimately the value of the data you can record, display and utilise using seaPro will grow significantly.

The format for the data log is the published GXF format, so your valuable data is no longer locked into a proprietary format. To convert data from other fixed formats please contact Euronav.

The seaPro Fishing version provides a range of enhanced data logging facilities. The fishing log is implemented as an overlay, which means that the existing Euronav Charting System overlay editing toolbar may be used to add a variety of additional objects to the log, such as text, polygons, marks and shaded areas.

Incoming position, water depth and water temperature data from an NMEA interface are all recorded in the log, allowing the vessel track to be plotted as a coloured line whose colour varies according to the stored data. The type of track plotted (depth, temperature, pure position or none) can be changed at any time without affecting the recording of new data. The colours can be selected directly from the palette available on the PC and may be used as a continuous colour band or as a discrete series of colours.

The seaPro fishing facilities are controlled from the Fishing Toolbar that allows simple one-click access to most of the fishing features through a series of large buttons. The toolbar offers the following facilities:

- Special marks may be selected and “dropped” onto the chart at either the current vessel position or at any other position in view.
- Standard marks from the existing overlay system may be selected and “dropped” onto the chart at either the current vessel position or at any other position in view.
- The depth at the current position may be marked on the chart, or preset to record at specific intervals.
- The type of track plotted (depth, temperature, ground type, pure position or none) can be selected.
- Recording of new data may be turned on and off without affecting data already recorded.
- The colours used to plot the track may be selected and the data ranges they represent may be modified.
- The existing Euronav Charting System overlay editing toolbar may be called up to extend the editing tools available.
- Toolbar drop marker buttons can be customized to your own requirements
- Direct access to the fishing toolbar help page.
- Display of a separate depth database (log)
- Spot depths dropped using the fishing toolbar.
- Other overlay objects such as polygons and shaded areas set up using the overlay editing toolbar launched from the fishing toolbar.
- Ground discrimination data.

Each time you start the program or stop and restart recording, a new track segment is created in the fishing log for each logging data type (water depth, water temperature and pure position). This allows the deletion of parts of a log track without affecting other parts – each segment is an object in its own right and can be deleted separately.

Additional to the fishing log, there is a separate depth log for recording a continuous stream of depth information. Both the log and display are separate from the main log.

1. Getting Started
2. Using seaPro
3. **Charts**
4. Waypoints, Routes & Passage Planning
5. Fishing
6. Tides
7. Setup
8. Radar
9. Weather
10. Appendix A – Step-by step Installation guide
11. Appendix B – Connecting a GPS and Instruments
12. Appendix C – Frequently asked questions

Quick Start

seaPro is designed to be quick and easy to install on most standard PCs. You are probably keen to get going straight away so if you are reasonably familiar with computers, can answer yes to the following questions and have already purchased your charts, it shouldn't take you any longer than about ten minutes to install seaPro and your charts and be up and running.

If you prefer to follow a full step-by-step guide, see Appendix A "Step-by-Step Installation" at the back of this manual.

Before installing seaPro check that you have a PC with the following ;

- ✓ Microsoft Windows 98 edition 2/ ME/ 2000/ NT4.0 or XP
- ✓ A free 9-pin serial port for connection to a GPS
- ✓ Additional serial ports (or USB ports that can be fitted with a USB to serial converter) to interface to instruments and/ or Radar NMEA data.
- ✓ A minimum of 300 Megabytes (MB) of free hard disk space (note the exact amount of space required will depend on the operating system being used and the charts required).
- ✓ A CD-ROM drive to install from the seaPro CD.
- ✓ A parallel (printer) port or spare USB port to connect the Security device (dongle).

Recommended system requirements

SeaPro is a graphics program and operates best with a high resolution (1024 x 768 or better) screen with high resolution graphics card. As memory is extensively used for chart redrawing a minimum 256MB of RAM is highly recommended.

Installing seaPro

Note: If you already have a version of seaPro installed on your PC, you must uninstall that version before installing this new one. **DO NOT PLUG IN THE DONGLE UNTIL YOU HAVE INSTALLED THE SOFTWARE!**

- 1) Quit all other applications and programs you may be running so that they do not interfere with the installation process.
- 2) Insert the seaPro CD-ROM in your computer's CD-ROM drive. Most standard CD-ROM drives will identify that the disk has been inserted and will start the seaPro presentation program automatically. *Note: If your CD does not auto-run, this may be because your CD-ROM drive is not set up to auto-detect CD-ROMS. For further help, please refer to the step-by-step instructions in the Appendix.*
- 3) Select an appropriate language from the list
- 4) Select the ***Install Euronav products and upgrades*** option.
- 5) Select the ***seaPro Installation*** option.

- 6) Choose the appropriate language from the list and press **OK**.
- 7) Follow the instructions on screen to install.
- 8) You will then be asked to restart your computer.
- 9) Once your computer has restarted plug in the dongle and run seaPro.

SeaPro should now be successfully installed. Once the installation is completed you will have the option of reading the **Readme** file. This file contains last minute information and some Frequently Asked Questions. Please read this information.

Installing Charts

Once the program has been successfully installed and you have familiarized yourself with it using the tutorial, the next step is to choose and install your charts. How you add charts to your seaPro program depends upon what kind of charts you have ordered. SeaPro is able to support multiple chart formats, with both vector and raster charts.

Livecharts (Vector charts)

If you have ordered vector Livecharts, you will be issued with either an unlock code or an “ems” unlock file to unlock them from your seaPro CD. (Note: an ems file is simply an automatic way of installing multiple charts rather than having to enter many unlock codes).

- Place the seaPro CD in the CD ROM Drive
- The installer should self-start. Select a language option then choose UNLOCK and a small screen will appear with a selection menu.
- To unlock charts with an unlock code ; select the Unlock menu and Unlock by codes or features. Enter the 16 digit unlock code and then click unlock.
- To unlock charts using an “ems” file, save the file to a floppy or temporary folder and close all programs. Insert the seaPro CD-ROM and allow it to auto-run. Select an appropriate language from the list and then select the **Livechart-chart installation and Unlock** option. Then select an appropriate language from the list and select **Unlock** from the main menu. From the drop-down menu select Unlock by file. Locate the “ems” file using the browse button and then click on **Install**.

When the charts have been loaded you will need to create a folio (electronically link the charts together). If you are not automatically prompted to do this then select the **Chart** menu and **Build folio** option. Click the **Create Folio** button and the charts will be linked.

A full step-by-step guide is given in Appendix A.

Raster Charts

When you order Raster charts you will need to give the ARCS permit and PIN number which are provided on a separate sheet with seaPro. This is a license number unique to you, please keep a record of this as you will need to use it when ordering further charts.

You need to have your Permit disk and Area CD and chart update disk if issued.

To install Raster charts (either ARCS, Seafarer or BSB), start seaPro and select the **Chart** menu and then **Install Charts**.

- Choose the **ARCS/HCRF** Raster Chart box and click **Next**.
- Follow the installation wizard by clicking **Next**.
- If you are installing charts for the first time, choose **Yes - installing new permits**. (If you are installing additional charts and already have your permit installed then choose **No** and follow the wizard through the installation).
- Choose **Install chart permits** for new chart installations.
- Choose **Install Permits from disk** (the permit disk is the floppy disk supplied with your ARCS CD ROMs). Insert the Floppy disk in to the floppy drive.
- The disk should now be read and the charts installed automatically.
- When complete click on the **Finish** button.
- After installing the permits follow the wizard which will guide you through installation of the charts and/or updates.
- You now need to 'build a folio' which will tell seaPro you have new charts installed.
- Choose the **Chart** menu, then **Folio** and choose **Build Folio**.

Connecting to a GPS

Connect the supplied serial data cable to your NMEA0183 GPS, according to the accompanying wiring instructions. seaPro is configured to expect NMEA0183 input from serial port COM1: as standard. If you are using another serial port, you will need to set this up from within seaPro once you have started the program. **See Appendix B at the back of the manual for wiring and installation details.**

Now you should be ready to use seaPro. Once you have indicated which serial port the serial data cable is plugged into, you should see the GPS LAT and LNG position in the *navigator display*, with a green 'traffic light' and your vessel's position should be shown on the chart. See **Frequently Asked Questions** at the end of this guide for more information if this is not the case.

Getting Help

seaPro is a comprehensive navigation system and therefore may appear complex to inexperienced users. For this reason, we suggest you take things slowly and use caution when operating the system. Do not change settings unless you fully understand what you are doing, and have read the relevant section of this User Guide.

seaPro has been designed to install and operate easily on most PCs, but there may be occasions when you obtain unexpected results. There are a number of resources available which will help you to identify and rectify any problems you may experience.

- 1) **This User Guide** is the prime source of help from the seaPro system. The user guide is not intended as a basic manual for computers or their operation, nor as a textbook on navigation. It is assumed that you are familiar with both the operation of Windows operating system and of normal navigation practices. You should ensure you have read the User Guide thoroughly before trying to obtain further help.
- 2) **“Read Me First” files** – When seaPro is first installed, a file entitled README.TXT is also added to your system. The file contains important up-to-date information which may not be included in the User Guide. The file is not only helpful should you experience any problems but should be read carefully to help familiarise yourself with the programme. To view the file, select the **“seaPro Read Me First”** icon on your computers desktop, or select it from the Windows Start menu.
- 3) seaPro supports **“Tool Tips”** – If you are not sure what a particular button “does”, move the mouse cursor over it and wait a moment. A small window will pop-up which gives information about the function of that button.
- 4) **On-line help** – (Available in English only) seaPro is equipped with an on-line help system which is available while the program is running. To access the help system, select the **Help** option and from the drop-down menu, select the item you need help on.
- 5) **Tutorial** - We have included a tutorial within seaPro, which guides you through some common tasks and will help to familiarize you with the program. To run the tutorial, select the **Help** option, and then select **Tutorial** – the navy blue Tutorial should then appear on your screen.

If you have exhausted these resources and still need help:

- Contact the dealer you bought the product from – they are familiar with seaPro and should be able to guide you through any problems you are having.
- If you are unable to obtain help from your dealer, you may contact Euronav Navigation; see our contact details on the front page of this manual.

Note: support is limited to the seaPro navigation product. If your problem is with basic computer operation or Microsoft Windows problems, WE WILL BE UNABLE TO HELP YOU.

Starting and Exiting seaPro

Close down any non-essential programs before running seaPro. Although it has been designed specifically for Windows multitasking, you should consider that each program which is running uses memory (RAM) and processing power even if it is minimized. By closing any non-essential programs down, you will make the maximum amount of PC resources available to seaPro, thus ensuring optimum performance.

Whenever you installed seaPro, the installer will also have installed a file entitled README.TXT. This is a very important file, containing up-to-date information about seaPro that may not be included in this printed User Manual. Be sure to read it for any last minute information.

Starting seaPro

How you start seaPro depends upon choices you made when installing it. You may have chosen either one of following:

- On the Desktop – simply double click on the *seaPro* icon
- At the top of the Start menu – Click on the *Start* button and move the cursor up the Start menu until it is over the *seaPro* entry, click again.

There will be a short delay while the program loads. A disclaimer window will then appear on the screen.

You may also use buttons on the disclaimer window to access the on-line help system, or to confirm which version of seaPro you have and which options have been included.

On the disclaimer screen there are also two “tick boxes”. One enables you to turn off the start-up sound. The other tick box concerns how seaPro will start up in the future, when this box is ticked, seaPro will remember previous settings. Sometimes, this is not desirable, so you may un-tick this box. seaPro will then start in its ‘out of the box’ mode.

Exiting seaPro

In common with most other Windows programs, there are several ways to stop running seaPro. These are often referred to as ‘quitting’ or ‘exiting’ the program. All of the following methods are valid ways of exiting seaPro.

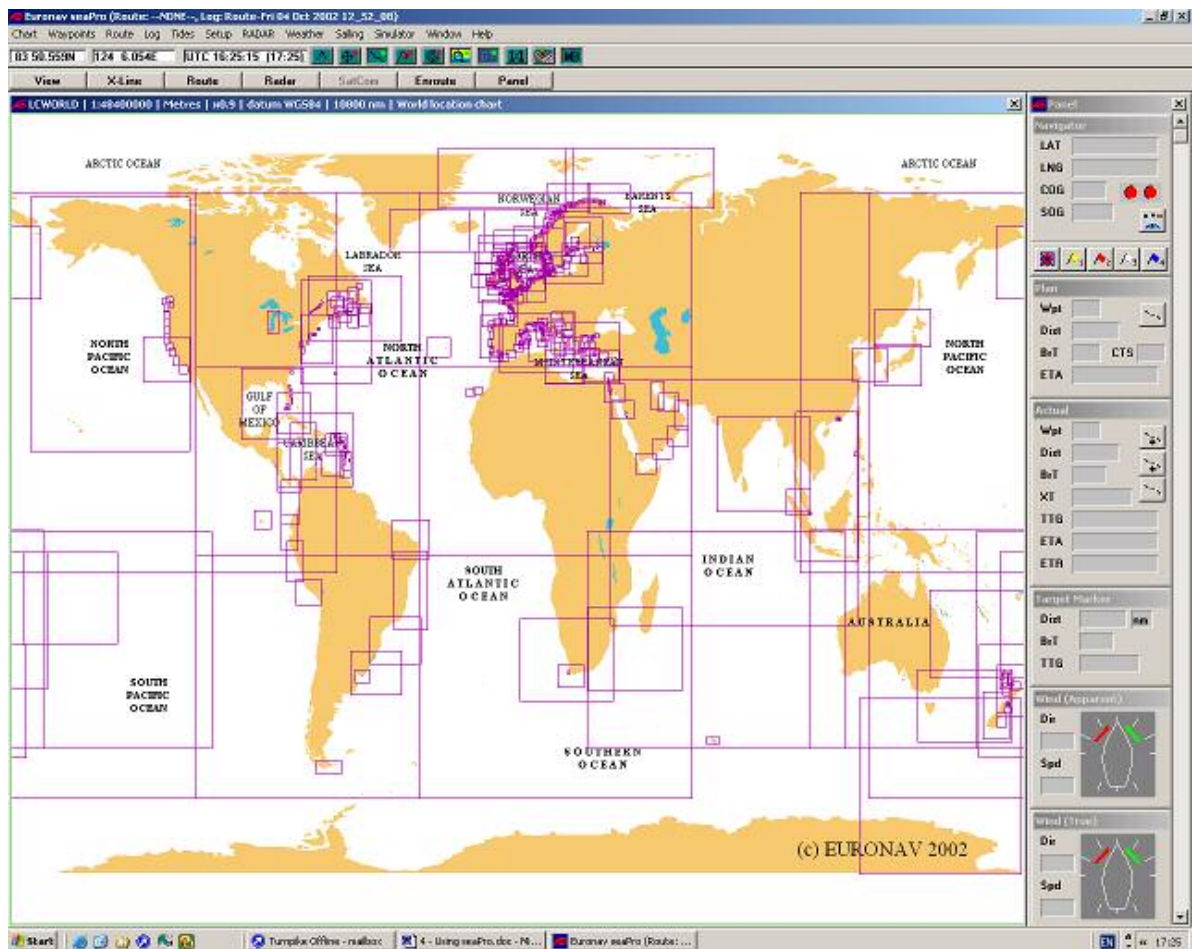
- Click on the button marked with an “X” in the top right hand corner of the seaPro window.
- Select the *Chart* option from the main menu and from the drop-down menu select *Exit*.

- Click on the flag symbol in the top left hand corner of the seaPro window and from the drop-down menu select *Close*.
- whilst holding down the *Alt* key, press the *F4* key on your keyboard.

Quitting seaPro in any one of these ways closes all of its files down properly and releases RAM and system resources to other programs. You should never simply switch off your PC while the seaPro program or any other program is still running. This may result in data corruption. Windows provides a *Shut Down* feature, accessible from the *Start* menu, which you should always use.

seaPro Main Screen

When seaPro is started, you will see a screen similar to the one shown below.



The Screen is divided up into several areas, described below:

- **The Menu Bar** – is where you can access most of the functions of seaPro. The function of each entry in the menu is described in the following sections.
- **The Graphic Toolbar** – displays the latitude (LAT) and longitude (LNG) of the mouse cursor as you move around the chart. It also displays local and UTC (GMT) time. The Graphic Toolbar gives you quick and convenient access to the following frequently used functions:

Most icons are toggle (on/off) indicated by a green/red light.



The Measure Tool - Allows measurement of distances and bearings from the vessel and between two or more points.



Chart Auto-scrolling – When switched on (green), this will keep your vessels position within the chart window at all times – to scroll elsewhere click again to turn auto-scrolling off (red).



Show Vessel Track. Toggles your vessels track on/off (shown as a red line).



Marker Flag - When placed on your chart will give constantly updated steering information for reaching its position – use in conjunction with the panel and Marker Flag option.



ARPA radar targets – when connected to suitable radar, seaPro displays radar targets on the charts.



Chart Auto-detail – toggles detail shown on charts. Auto-detail helps to give a clear display by automatically selecting the level of detail according to the level of zoom. If turned off you will force all detail to be shown, which could create a cluttered screen when zooming out.



Folio Mode – Off – displays the current selected chart only.
On – automatically selects charts for you.



Raster chart 1:1 zoom – shows raster charts at a scale of 1 to 1.



Show Navigator Window – details on GPS fix.



Alarm Status. Click on this to display details of any alarm state.

The Main Toolbar – the grey toolbar provides further sets of buttons, grouped to particular tasks.

The Main Toolbar -  - provides a quick and easy way of accessing often used functions within seaPro.

When you click on one of the buttons on the Main Toolbar, it is replaced by another toolbar, which contains options specific to that function. Each of the toolbars are shown below.

Each toolbar includes a button entitled **Main**, which you can click on to return to the Main Toolbar.

The button entitled Panel is a special case of toolbar in that it is called upon from the main Toolbar, but behaves differently from the other toolbars. The Panel is described fully in the **Setup** chapter.

The View Toolbar - 

This Toolbar gives access to seaPro's **View** feature, whereby you can easily save and recall views of charts.

The X-Line Toolbar - 

When passage-monitoring, seaPro shows an extended heading line (X-line) in front of the vessel. This is a projection of its current course over the ground (COG) or Gyro heading, the length of which indicates how much distance is likely to be covered in a given time.

The Route Toolbar - 

This Toolbar is used in planning and modifying routes.

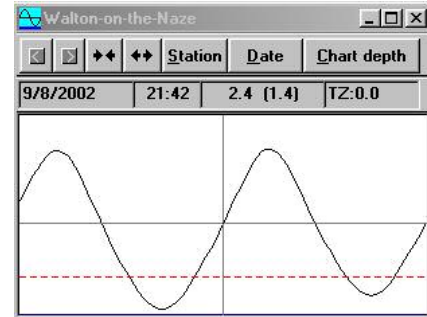
It can either be accessed from the **Route** button on the main Toolbar, or by choosing **Route** from the main menu and then selecting **New** or **Modify** from the drop-down menu. See the chapter on Waypoints, Routes and Passage Planning chapter for more details.

Floating Toolbars

In addition to the toolbars described above, seaPro also offers Floating Toolbars. These also combine related functions, but are designed to be moved around the screen into convenient positions. Unlike the fixed Toolbars, the Floating Toolbars are not accessed from the Main Toolbar, but as per the instructions below.

The Tidal Curve Toolbar

This toolbar is accessed by selecting the *Tides* option from the main menu and *Tidal curve* from the drop-down menu. The tidal Curve Toolbar allows you to view times and heights of high and low water at selected ports. Tidal Curve functions are explained in the Tides chapter. Note all tides are referenced to UTC which is almost identical to GMT.



The Tidal Atlas Toolbar

This toolbar is accessed by selecting *Tides* from the main menu and *Tidal Atlas* from the drop-down menu. This toolbar lets you view tidal streams for areas where that data exists. The tidal atlas is also used to indicate the effect of tidal streams on planned passages, providing full tidal-passage planning functions.

The Measure Toolbar

This toolbar allows easy and quick measurements to be taken from the charts on screen. It is also able to show the magnetic variation and rate of change at any point on Earth.

- **The Chart Window** – this is the main area of the program, devoted to displaying one or more high-quality electronic charts.
- **The Instrument Panel** – this is where incoming data from navigation instruments is displayed. It may be turned on or off as you desire.

Chart Windows

A chart window is simply an area of the screen, which is filled with a chart. It is characterized by having a title bar at the top which shows the following information:

- **Chart Number** – each chart has a unique number e.g. BA2182a
- **Scale** – e.g. with a 1:75 000, one centimeter on the original paper chart equals 75 000 cm on the Earth's surface.
- **Depth units** – either Metres, Feet, or Fathoms and Feet
- **Zoom Factor** – indicates the extent to which the chart has been “zoomed into”.
- **Horizontal datum** – this indicates whether the chart has been prepared to the same horizontal.
- **Chart Name**

Each chart window may contain one chart, unless seaPro is operating in *Cell Mode*.

Selecting Charts

Each chart window is automatically filled with the world overview. You then load your desired chart in one of two ways:

- If you know the chart number, select **Chart** from the main menu and **Select** from the drop down menu. The **Select a Chart to view** dialog will then appear on your screen. Select the chart you wish to load and then Finish.
- Move the mouse cursor over the area covered by the required chart and click once with the left button. The required chart will then be displayed. This may be difficult if the required chart is a large-scale chart and therefore very small, or if there are many other charts in the same area. If this is the case, zoom in to the area your desired chart is in (see below) until it is easier to identify the chart you require.

Multiple chart windows

seaPro allows you to have more than one chart window open. Your position, log and route will be shown on all windows at the same time. You can view different charts, different parts of the same chart or even the same part of the same chart but at different scales, in the windows. You may have just one window open, or as many as you like (subject to your computers processing ability). You can use this facility to your advantage in several ways:

When passage planning, open three or more windows to display your points of departure and arrival in large scale, with a smaller scale overview of the entire route.

When en-route, use one or two windows to view your current passage in large or small scales and another window to plan a different passage.

This facility is particularly useful because it saves the navigator a large amount of zooming-in and out and moving around charts.

Opening a new chart window

To create a new chart window, select **Chart** and **New Window**. seaPro will create a new window, pre-loaded with the world overview chart. You may then select a chart to view.

Re-sizing chart windows

Chart windows can be resized by moving the mouse cursor over the edge of the window until it changes to a double-headed arrow. To do this, click and hold down the left mouse button and drag the window to the desired shape. Then release the mouse button. SeaPro will now re-draw the chart within the new shaped window. You will notice that if you get practiced at dragging the edge of the window at one of its corners as opposed to along its edges, you can resize it two dimensions at once.

Rearranging chart windows

Chart windows can be moved in the usual Windows manner (by clicking on the chart windows title bar with the left mouse button, holding the button down and dragging it to the desired location).

When you click within the chart area of a chart window, or click on its title bar, that chart becomes the current chart window. It may overlap or even hide any other chart windows on your screen. If you want to view a chart that has become hidden you can do one of the following:

- Resize one or more chart windows yourself to reveal the hidden chart.
- Use one of the automatic rearrangement methods described below.

To automatically rearrange the chart windows, choose one of the following options from the Window menu:

- **Tile horizontal** – to tile the charts within the available client area of the main menu with a bias towards minimizing the number of window columns. This tends to suit horizontal format charts.
- **Tile Vertical** – to tile the charts within the available client area of the main window with a bias towards minimizing the number of window rows. This tends to suit vertical format charts.
- **Cascade** – to produce a series of diagonally overlapped chart windows, this is not especially useful for navigation and will make chart redrawing slow, but may be useful if you want to keep several charts on-screen while still keeping their size large.

Closing Chart Windows

You can close a chart window in any one of three ways:

- Click on the button marked with an “X” in the top right hand corner of the chart Window
- Click on the button marked with a dot in the top left hand corner of the chart window and select **Close**.
- Press the **F4** key on your keyboard, whilst holding down the **Ctrl** key.

The Chart Context Menu

If you right-press on the title bar of the current chart window, a menu will appear. This allows you quick access to functions, *some of which relate to that one chart only*.

You may use the Chart Context Menu for several different functions:

- To zoom out
- To display information about the chart in that window,
- To change the way the chart in that window is displayed,
- To query mark and line features on Livecharts,
- To query the current log file or the route being planned.

The functions available from the Chart Context Menu are described in the relevant sections.

Viewing and Moving around charts

One of the major benefits of the seaPro navigation system is the ease and flexibility involved in viewing and moving around your charts, and in ensuring a suitable amount of chart detail is always shown. All moving and zooming may be done with the mouse, over the chart, without the need to click on fiddly 'zoom in' and 'zoom out' buttons away from the chart area.

Additionally, there are some useful keyboard shortcuts to speed up things even further, although these may not work with all "compact" keyboards on some laptop computers.

Zooming in

To zoom into a particular area of a chart -

- Move the mouse cursor to a point bottom-left or top-right of the area you want to look at.
- Then click, and while holding the left mouse button down, move the cursor towards and past the area in question
- When you have outlined the area you want to zoom into, release the left mouse button and seaPro will fill the window with a larger scale view of the area you have defined.

Note; that the shape of the box you create as you move the mouse is constrained to be the same aspect-ratio as the window you are working in. this is to ensure you fill the maximum area of the window with chart data.

Overzoom

There is a maximum level that you may zoom to each chart. This is because to zoom in further would exceed the accuracy of the original survey and chart production method, and so would be unsafe for navigation.

In seaPro using Livecharts, it is possible to enter a mode called Overzoom, where it is possible to zoom in much farther than normal. This is of particular use in fishing and diving applications, where there is a need to use seaPro large scale plotting facility (usually in conjunction with Differential GPS) as opposed to general navigation.

Note: at these zoom levels it is unsafe to use the system for navigation, so a warning is displayed. At very high zoom levels, you may experience odd result as artefacts from the chart creation process appear.

Zooming out

To zoom out:

- click once over the chart window with the left mouse button and seaPro will zoom out one level.
- Click again and it will zoom out again, you can continue doing this until you are able to view the whole chart.

Panning

When you move the mouse cursor close to the edge of the chart window, you will find that it changes into a relatively large blue arrow. Clicking with the left mouse button, while the cursor is in this state, causes seaPro to pan the chart in that direction.

Keyboard Shortcuts

In addition to using the mouse, there are several keyboard shortcuts that may be used to move around the current chart window:

PgUp – Zooms in

PgDn – Zooms out

Home – zooms out giving a full view of the current chart

End – Zooms right out to the world overview chart.

Using the **Arrow** keys will pan the chart in the relevant direction.


On some laptop computer displays, you may find the mouse cursor difficult to see in certain lighting conditions pressing the F3 key will center the mouse cursor in seaPro's window so you may locate it more easily.

Note that on some laptop computers, with non-standard compact keyboards, some of these keyboard shortcuts may not work.

1:1 Zoom

With raster chart types, there is a facility called 1:1 Zoom. Selecting this feature shows raster charts at a 1 to 1 scale with the original paper chart, for maximum clarity.

There are two ways of selecting 1:1 zoom :

- Click on the  button on the Graphical Toolbar. This affects all chart windows, so all chart windows containing raster charts will zoom to 1:1.
- If you only wish to view the chart in the current window at 1:1, right-click on the Title Bar to call up the Chart Context Menu and then select **Raster** (HCRF/BSB) Zoom 1:1.

Note: on some raster chart types and at some scales, selecting 1:1 zoom may result in the chart window showing only a very limited geographical area, if this is the case, it is prudent to either have another smaller scale view of the same area visible in another window, or at least, to make the current window as large as possible. This is especially important for fast moving vessels.

If you make a mistake when zooming or panning, you can re-draw the previous view by using the F2 key

Views

SeaPro allows you to save and instantly recall views to your current chart window.
To save a view:

- Select the required chart area using the normal method
- Click on the **View** button on the Main Toolbar and then click on the **Save** button
- Click on the number you would like to save the view under.



To recall a view, simply click on the **View** button on the **Main Toolbar** to call up the View Toolbar and click on the number of the view you would like to see.

Chart Auto Scroll

When seaPro is receiving position data from a GPS, the vessel position is shown overlaid onto the electronic chart. Selecting **Auto Scroll** means that seaPro will move the chart to ensure that the vessel is always visible.

Chart **Auto Scroll** is selected from the  button on the Graphical Toolbar. When it is on, the button shows a green indicator, when it is off, it shows a red indicator.

Note; This is a global setting, i.e. this will ensure that the vessel is shown centred in all chart windows.



There are times when this option is not desirable, for example, when monitoring a passage in one window, and planning a route in a different geographical area in another window. Because of this, chart Auto Scroll may be disabled for the current chart window by right clicking on the **Title Bar** to select the **Chart Context menu** and selecting **Properties** and then **Prevent Auto-Scroll**. Once Auto Scroll is disabled, this will remain in effect until you either re-enable it, or you close the chart window.

Other Tools


Measure Toolbar





The measure tool allows easy measurement of distances and bearings (to and from the vessel), estimates of great circle distances and estimates of the current magnetic variation anywhere on the earth (at zero altitude).


To access the Measure Toolbar, click on the  button on the *Graphical Toolbar*. To close the Measure Toolbar, click on the  button at the right-hand corner of the Measure Toolbar. When you close the Measure Toolbar, all measurement information that was displayed will be erased.


To view the meaning of each button use the tooltips (leave the cursor over the button for a few seconds).


To measure the distance between two points – click on the  button and the cursor will change to a “crosshair”. Click on the chart to select the point you want to measure from, and again to select the point you want to measure to. seaPro will measure the distance, bearing and reciprocal bearing and report it at the bottom of the Measure Toolbar. If Text Label Display is switched on (see next page) you will also see a small box showing the distance and bearing.


At any stage, you can click on the  button to switch between Rhumb Line and Great Circle display and calculation.

To measure distances between multiple points – click on the  button and the cursor will change to a “crosshair”. Click to select the start position and click the left mouse button, move the cursor to the next position and click the left mouse button again; a line is drawn between the two points and if Text Label Display is switched on (see next page), the first point is labelled with distance and bearing. Repeat this as many times as required, ending by clicking the right mouse button. The total distance is shown in the title bar of the tool.

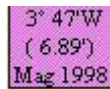
At any stage, you can click on the  button to switch between Rhumb Line and Great Circle display and calculation.

Text Label Display – clicking on the  button causes the text labels to be switched on and off. When the button has a red cross through it, Text Label is off.

Removing the measure lines – clicking on the  button will erase all lines and text boxes created from the Measure Toolbar, without closing it. If you do not remove the lines, it is possible to use seaPro to do a manual fix, by plotting lines from known points and producing a “cocked-hat”. Closing the Measure Toolbar will also remove all lines and text boxes.

Magnetic Variation measurement – clicking on the  button allows you to find the current magnetic variation at any place on Earth. The cursor will change to a “crosshair”, which you may place over the desired location and click again, seaPro will then generate a small box

close to this position, containing the current magnetic variation at that location. The box also states the current annual rate of increase or decrease (shown with a minus sign). Repeat as required.




3° 47'W
(6.89')
Mag 1998

As with the distance measurement the information remains on the screen until it is either erased or the Measure Toolbar is closed.

Note: this is only a prediction model, and should be regarded as liable to be incorrect – but probably no more so than the data supplied on paper charts.

En-route tools

Marker Flag

The  button on the Graphical Toolbar turns the **Marker** flag facility on and off. When a manual marker flag is placed on a chart, the instrument panel can give constantly update steering information for reaching that position, and NMEA sentences can be sent to external instruments such as RADAR display so that the marker can be used as a RADAR “lollipop”. One marker flag can be active at a time in seaPro.

- When the light in the top right corner of the button is **red** the facility is off.
- Left-clicking the button while in this state causes the cursor to change to a crosshair while over any chart windows; left-click on a chart to drop a maker flag there.
- Right-clicking the button while in this state causes a manual entry dialog to be displayed; type in the absolute position of the marker flag or type in a bearing and distance from the current vessel position then click the apply button.
- When the light in the top right corner of the button is **green**, the facility is on. The marker flag is shown on any charts covering its position, the marker flag instrument is operative and configured marker flag NMEA sentences will be transmitted if the marker flag serial port has been enabled.
- Left or right clicking the button while in this state cancels the active marker flag.

Alarms

seaPro allows the current position of the vessel to be detected with respect to user defined area(s), the alarm can be triggered when:

- The vessel enters an area (exclusion zone)
- The vessel leaves an area (anchor)
- The vessel enters or leaves an area.

The alarm is given by an audible indication and a message in the alarm status box (alarm will go red to indicate a changed condition).

Note: this is a different system to the radar alarm that detects external APRA targets entering and alarm area.

Warning: if you have a sound card fitted you may not hear the audible alarm if the audio system is switched off or volume turned down. Due to the ambient noise level, you may not be able to hear the audible alarm unless connected to an external alarm system.

Safety: the alarm system should only be used to assist with normal good watch keeping/navigation practices and not to replace them.

See Chapter 7 Setup for more details.

Using Charts with seaPro

seaPro supports many different chart formats including various raster and vector types. Currently the following formats are supported;

Vector ; Livecharts, S57

Raster ; ARCS, SeaFarer, BSB

If you have not yet purchased your charts, you may have some questions regarding which make and type of charts to purchase and which type of correction service to use.

Raster and Vector Charting

Electronic charts are available in two main types – raster and vector. In some cases, they appear to be quite similar without too much noticeable difference, until you take a closer look.

Raster Charts

A raster-scanned electronic chart is like an electronic photocopy of a paper chart. On screen, it looks identical to a paper chart and is produced by the British Admiralty in England and by official hydrographic offices in a number of other countries. Raster charts are available in single charts or geographical folios and are distributed on CD-ROM.

Raster charts are normally produced by passing the original paper chart through a device called a scanner that rasterises the chart i.e. it makes a computer file which contains the visual information from the chart stored as a series of dots of varying colour and density.

Raster images are also larger in file size. They take longer to print and consume more disk storage space. Raster images cannot contain any "live" data. For example, when text is rasterised it is no longer editable because it is now seen as an "image", a collection of coloured dots.

Raster charts include

- ARCS - A worldwide chart set derived directly from the master paper chart films of the UK Hydrographic Office – giving the best possible accuracy. The format is known as HCRF.
- Seafarer Charts – HCRF format from the Australian Hydrographic Office, covering Australasian waters
- BSB charts are raster charts scanned from NOAA (National Oceanographic & Aeronautical Administration) in the USA. Because they are royalty free, these charts represent good value for money.

BSB format charts covering USA waters are now marketed by Maptech as ChartKit/NOAA charts. Do not confuse these with Maptech ChartPacks which are an older, less useful format and which will not work with seaPro.

Other companies are starting to release raster charts in BSB format: although Euronav can offer no guarantees due to differing interpretations of the format by the

manufacturers, some of these charts work with seaPro. Customers are advised to check with the manufacturers before purchasing non-Maptech BSB format charts for use with seaPro.

Vector Charts

To create a high-quality vector chart a paper chart is digitised accurately by tracing the outlines and exact positions of all the features on the scanned raster chart into a series of mathematical representations (vectors). Features on the chart are stored onto separate layers of information.

Storing these types of data on separate layers makes it possible for the resulting vector chart to have some “intelligence” i.e. software is able to display information from the chart selectively, or indeed may interrogate the vector chart, for example “what is the charted depth of water 100 metres ahead of the current vessel position?”

Vector charts tend to have smaller size files and can be zoomed in to a greater extent than a raster chart. The first thing to notice is the clarity of the vector charts. Due to their mathematical nature, vector charts remain sharp and clear at all zoom levels or orientations. Vector charts incorporate navigationally useful “intelligence” in their format, and due to the way they are constructed can require far less storage space, can display faster, and may be easier to update than raster charts.

Those who have used vector charts in the past are undoubtedly familiar with a vector charts ability to hide and display different “layers”. Layers include things like depth contours, land features, navigation aids etc. the ability to hide or display different layers makes it easier for the mariner to only display the information that is relevant to him/her.

Vector formats include:

- Livechart vector charts – very high quality charts based on BA paper charts. They are numbered the same as the paper chart it was taken from.
- S57 Vector charts (including encoded Primar charts) - official digital data from Hydrographic Offices. This data will eventually replace paper charts for commercial vessels but are currently in limited supply. Please contact Euronav for more information on this format.
- Eurodems – an additional layer for the above vector formats to show chart relief rendering (this is similar to the atlas style contouring and colouring and is used for passenger information systems and land based applications). Some low-resolution data is provided with the standard package and high quality data is available as an option.

The Chart Folio

To manage and work with the charts you may wish to use, seaPro needs to create a Chart Folio. This forms a complete list of all charts installed in the system. The charts can be shown on your display as folio boxes, which represent the boundaries of each chart. It is possible to work with just a single chart (folio mode OFF) or for seaPro to automatically select the best chart (folio mode ON).

Note: You must create a new folio each time you install or uninstall a chart; failure to do so may cause unexpected results and prevent selection of any newly installed charts.

Creating the Folio

- 1) Select **Chart** from the main menu and **Folio** from the drop-down menu. You will be presented with a dialog box from which you can choose which chart types to rebuild into the folio.
- 2) Select the **Create Folio** option to build the folio, seaPro will then examine each chart in turn and add it to your folio.
If you have a lot of charts, this operation may take some time.
- 3) When the dialog reports it has completed building the folio, click the **Finished** button.

seaPro will look for charts in the folder you have specified, if you believe you have more charts than the Create Folio dialog reports, check that you have installed them into the folders you have specified (check the Chart Directories tab on the Settings dialog, which is on the Chart Menu).


Using Folio Mode

A major feature of seaPro is it's ability to operate in folio mode, both while planning passages and while monitoring your vessels progress.

This means that when you are moving across a chart and reach the edge of it, seaPro will automatically choose the next available chart. If the next chart is at a larger scale, seaPro will choose that in preference to a smaller-scale chart. If the next chart available is at a smaller scale than the current chart, seaPro will use that one.

Similarly when zooming in and out, seaPro determines which is the best scale to use from those available. Where other electronic navigation programs expect you to always choose charts by number, seaPro automatically shows you the best chart for the area you are looking at.

With seaPro, folio mode even works with different chart types, allowing you to specify which kind of chart (raster or vector) you wish to use as preference. seaPro can display multiple chart formats at the same time, these settings are controlled within the Folio dialog and Chart – Settings – Chart Directories dialog (tick which formats to use).

Folio mode is switched on and off by clicking on the  button on the **Graphical Toolbar**. When folio mode is on, the “light” on the button is green. In this mode seaPro will automatically select the chart. When folio mode is off the “light” is red and seaPro will only use the chart selected. Folio mode may also be turned on and off by selecting **Folio** from the **Chart** menu and clicking on the **Enable Folio** setting.

Folio mode is a global setting i.e. when switched on, it affects all chart windows. It is not possible for safety reasons to have some windows operating in folio mode and some not.

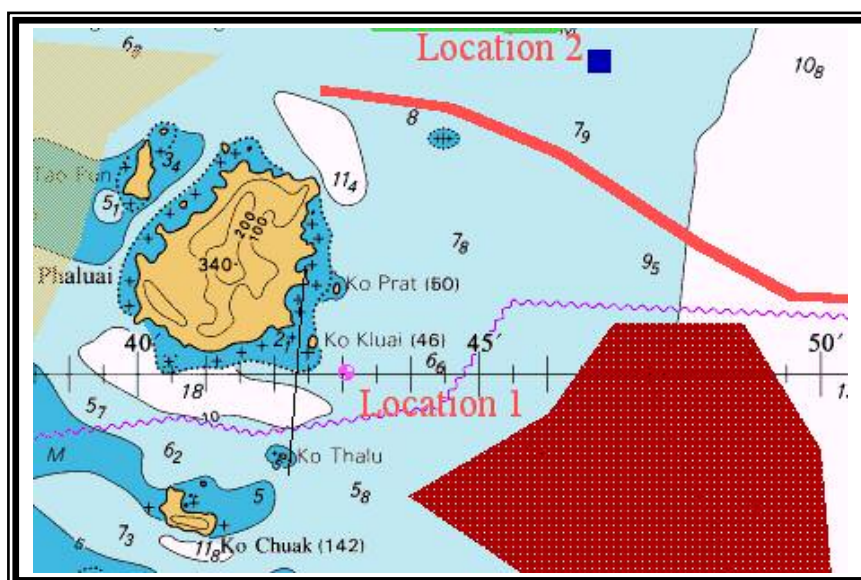
Chart Overlays

SeaPro supports the use of overlays. The Overlay feature allows the user to add his/her own information that may be shown overlaid on navigational charts.

Overlay features enables;

- The addition of text, lines, marks and areas to be drawn
- the display of up to two overlays at the same time
- enhanced editing features
- the ability to save and load an infinite number of overlays (subject to the amount of disk space available).
- A chart corrections module – allowing you to perform Notice to Mariners (NM) on both raster and vector charts yourself.

The image below shows a screen captured from seaPro. Not that the point, line and area type data overlaid onto an Arcs Raster chart (overlays also work with vector charts).



To bring up the Overlay toolbar, select the **Chart** menu and **Show Overlay Toolbar** from the drop-down menu. The floating toolbar will then appear on your screen.



Toolbar Functions

Unless otherwise specified the functions of the buttons are the same as for the standard toolbar.



Selects lines and polygons. When this button is selected, the cursor will change to a crosshair, which you may place over the desired line or polygon and click. The line/polygon will then be highlighted in red. To return to the Overlay toolbar, right-click on the mouse.



Clicking on this button undoes the overlay that has been selected. You may then select another overlay or exit this function.



Adds a line (or any number of lines) to the overlay. When this button is selected, the cursor will change to a crosshair. Place the crosshair on the location you wish to

add a line to and left-click. Move the cursor to the next position and click the left mouse button again; a line will be drawn between the two points. You may repeat this procedure as many times as required. Ending by clicking the right mouse button.



Adds a rectangle (line). When this button is selected, the cursor will change to a crosshair. Place the crosshair on a point south West of the area you want to draw the rectangle on and left click. While holding the left mouse button down, move the cursor towards and past the area in question, drawing a rectangle. Click again and the rectangle will become shaded.



Adds a circle. Repeat the instructions above for adding a rectangle.



Adds points to the start/end of a line. When this button is selected, the cursor will change to a crosshair. Place the crosshair at the start or the end of the line (depending in which direction you wish to extend the line) where you wish to add the point to and left click. The line will then extend to where the new point has been added.



Adds a polygon. When this button is selected, the cursor will change to a crosshair. Move the cursor to the point where you wish to start drawing the polygon and left click the mouse – a green dot will appear on the screen. Move the cursor to the next position and click the left mouse button again; a line is drawn between the two points. Repeat this as many times as required, ending clicking on the right mouse button.



Adds a polygon with no fill. Repeat the instructions above for adding a polygon with no fill.



Inserts a point. When this button is selected, the cursor will change to a crosshair. Place the cursor over the area you wish to insert the point and click, then move the cursor to where you wish to insert the new point of the polygon and click again. The polygon/line will change shape accordingly to accommodate the new point.



Moves a point to a different location. When this button is selected, the cursor will change to a crosshair. Place this over the polygon/line to be moved and click, now move the cursor to where you would like the new point to be and click again. The polygon/line will change shape accordingly to accommodate the new point.



Deletes a point or selection.



Deletes a selection of a line.



Select colours and patterns.



Updates a line or polygon with current palette.



Adds a mark.



Edits a mark.



Deletes a mark.



builds a polygon from lines.



Layer control.



Shows numeric toolbar.



Select object properties.

Show/hide overlay.

Edits list.

Note: All editing take place on overlay 1 only. Overlay 2 can be selected from the overlay tab in the chart settings notebook but is non-editable.

Both overlay 1 and overlay 2 can be selected from the settings notebook and if the show flag is in the notebook the overlays will be automatically displayed when the software is next used.

Snap – to snap to a previously entered point while adding line or polygon points, hold down the shift key when pressing the left mouse button. The next point will be placed at the same location as the nearest point to the cursor.

Chart Corrections

seaPro includes the ability to correct both vector and raster charts with Notice to Mariners corrections.

Note: ARCS; if you are using the ARCS Navigator service it is probably inappropriate to use this facility with these charts.

Note: Livecharts. This chart correction system is not compatible with charts that have been corrected with the DOS or classic version of the charting system. Any corrected charts should be used with the correction mode switched off or preferably re-installed. Alternatively use the 'Remove corrections button (Waste paper basket icon) on the corrections toolbar to remove the changes to the chart, similarly charts corrected with this system should not be used on DOS or classic versions of this product.

Charts might also be subject to a new edition that is outside Notice to Mariners corrections – contact your Euronav Dealer or Euronav directly to purchase an update.

How Corrections work

Each corrected chart has associated with it an overlay. The corrections overlays are very similar to a normal GFX overlay except that they are specific to a single chart, and are loaded automatically when the chart is selected, and removed when another chart is selected. If you have 4 different charts selected, for example, 4 different correction overlays may be loaded.

There is a difference between vector and raster charts, with the Livechart vector charts, a mark that is edited is flagged in the original chart data as being deleted and is not displayed on the screen, and a new edited version of the mark is displayed. On a raster chart, the original mark will still be visible and any correction will be overlaid over this.

Note: On Livecharts, the original chart marks can be deleted and edited, but the contours cannot. This is due to the sheer complexity of the line and polygon data that makes it unsuitable for corrections editing. Where large changes or inserts are required, you should purchase an updated version of the chart. However, small changes can be indicated by marking up the lines that have been deleted and adding new lines as required. This is no worse than correction of a paper chart.

Important: all chart corrections should be done with the chart datum mode set to local chart datum so as to be compatible with the Notice to Mariners information.

When a chart is finally updated by the manufacturer, the associated corrections file should be removed using the delete correction facility (below).

To add a chart correction, select the chart correction toolbar option from the Chart option on the main menu. The floating toolbar will then appear on your screen.

Toolbar Functions





Add a line - Allows a line to be drawn on the overlay. Move the cursor over the place to start drawing the line, note the cursor shows the waypoint placement shape. Use the left mouse button to place the point on the overlay, repeat the process until the required line has been drawn. Press the right mouse button to end the entries. The line style (dot, dash etc.), thickness and colour can be selected prior to drawing using the palette function (below).



Add points to the end of a line - Move the cursor over the line end to add the points to, press the left mouse button. Drag the new point to the required position. Press the right button to end.



Add a polygon - Allows a polygon to be drawn on the overlay. Move the cursor over the place to start drawing the polygon, note the cursor shows the waypoint placement shape. Use the left mouse button to place the point on the overlay, repeat the process until the required polygon has been drawn. Press the right mouse button to end the entries.

The polygon fill pattern, color and transparency can be selected prior to drawing using the palette function (below).



Insert an extra point on to a line - Additional points can be inserted into the line. Move the cursor close to the line where the point needs to be inserted, press the left button, drag the cursor to position the new point. Press the right key to end the entry.



Move a point on a line - A point can be moved by moving the cursor over the required line, pressing the left mouse button, dragging the point with the mouse (notice the lines rubber band), pres the left mouse button to place the point, or the right mouse button to cancel.



Delete a point – A point on a line can be erased by moving the cursor over the point and pressing the left mouse button. Confirmation to continue the deletion will be prompted for.

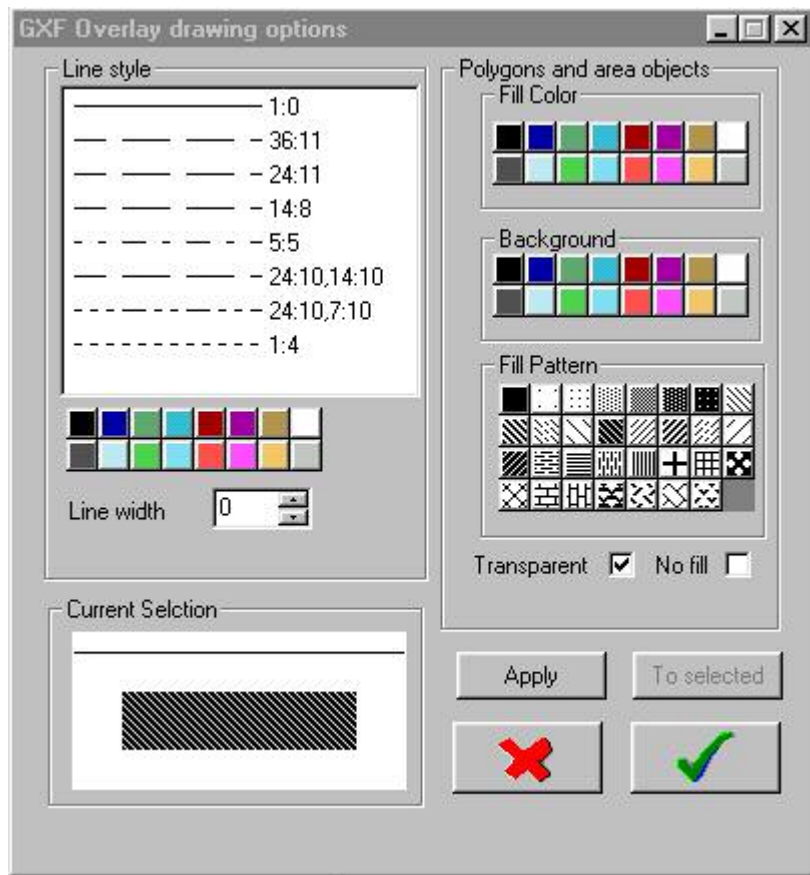


- Select colours and patterns



- Update a line or polygon with current palette.

Select either of these two buttons on the toolbar and a dialog box will appear on the screen as shown below.



The dialog window allows you to change the colors, patterns and line styles of lines and polygons.

To change the default settings for all newly created objects

- Make the required selection
- Then either - Press the OK button (tick), the options will be updated and the window will closed, **Or** - Press the **Apply** button and the changes will be applied but the window will be left open.

Other operations can be done while the window is open.

To update objects use the **select** tool to hi-light the required object, select the options required and press the **Apply to selected** button

Lines - The color, line style and thickness can be selected; the current selection is shown in the pre-view area. Select the required color and line style by clicking on the required option. Note: Line thickness can only be selected for a solid line.

Polygons - Select the required fill pattern, color. Additionally the transparent box can be ticked, allowing the fill pattern to appear transparent, the original chart information can then be seen through it. This is the recommended setting so as not to obscure chart data. If left unselected, choose the required background colour for the pattern.

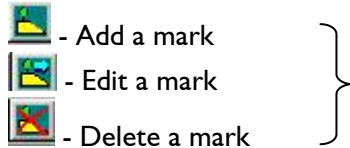
Opaque background - When selected single width lines with a non-solid style are drawn with the background color displayed between the solid parts of the line. Otherwise the gaps are transparent.

No fill - Polygons are drawn as an outline only

Show edges - Polygons edges are displayed in the currently selected line pattern and color

Apply button - Applies the changes

To selected button - Applies the current selection to all selected overlay objects.



A mark is either a buoyage item (or other symbol) with associated text or just a text item with no symbol.

- Move the cursor over the required position (to enter a position by typing, click anywhere on the chart and edit the position) click the left mouse button (right to cancel).
- A dialog box will appear as shown below:

BXI Mark

Location
Lat: 57.44424N
Long: 1.5068W
Position referenced to a chart datum [?]

Zoom levels (nm) - I always
Show at: -1.00
Current (nm): 6.40

Current section

Type of object (557 categories)
Attribute 1: 22 Chart correction - marks
Attribute 2: 0 ?

Symbols
Symbol: List, Light: 0

Text
Initial Text Position
Font size: Small, Medium, Large

Buttons: Attached files, Light/sectors, [Red X], [Green Checkmark]

Position - Enter or edit the position for the buoy

Zoom level - The overlays have the ability to show different objects at a user defined level of zoom. Use this feature to prevent overlays becoming cluttered as you zoom out. The zoom level is defined as the maximum diagonal distance in nautical miles (nm) that the displayed chart must have on the screen before the object will be displayed.

Enter the level at which the mark will appear on the chart. The current chart diagonal distance is shown in the adjacent field.

Object - When using marks, each object is defined using its object code, a unique code that describes what the object is irrespective of its visual appearance. Although you do not have to adhere to this, using the correct object codes allows you to interrogate the object in use. Select a description for the object from the pull down list.

Overlays are stored in a standard GXF format, here every object can be given a code to describes what the object is, irrespective of the symbol or colors used.

For further information see the GXF format specification document, the latest documentation is available from the Euronav web site.

Symbols - Different shapes can be associated with each object from a large range of pre-defined symbols.

To select one of the 255 symbols, either select the symbol number using the spin control or press the list button to view and select the symbols graphically. The color of the symbol is selected from the color buttons to the right.

Select any required light blip color (light symbol).

Up to two tops mark can also be selected, these have the same color as the symbol.

Each mark can have associated a text file as well as an image file (picture)

To select an attached file select the Attached files button . Select the required files, use the list buttons to select the required files and the view button to view the files.

Most common picture formats are supported including PCX, JPEG, TIFF and BMP.

You can easily build up a visual database of for example approaches to harbors . The attached files can be viewed when clicking on the object using the information inquiry (right mouse button while over the chart).

Text - Enter any required text (Hint: for a text only entry, don't select any symbols). Select the required text size and color. The starting position for the text relative to the symbol can be selected using the compass arrows.

Note: Any characters using the {ESCxxxx} type construct that appear are simple rich text commands. These are explained in the GXF specifications.

Preview Window - This shows how the symbol and text will look on the final overlay.



Trash can - selecting this button will remove any chart corrections you have made. This facility should always be used before updating a chart (ARCS, BSB or Livechart).

On Livecharts it resets all the delete flags, returning the chart to the same state as the original chart when installed – the files dates will be very different.



Online help - Selecting this button will activate the online help.

Colours

When using seaPro in low lighting levels such as at night on a ships bridge, it is necessary to reduce glare from the PCs screen so as not to destroy the navigator/watch keeper's night vision.

It is not sufficient to simply dim the screen brightness and contrast controls, since this results in a screen image which is unclear and difficult to work with.

SeaPro achieves correct glare reduction by changing the colour mapping on the chart palettes for the charts. Settings for three lighting levels are provided:

Day – charts look very similar to their paper equivalent.

Dusk – usually a darker shading or the colours may be totally changed (with ARCS)

Night – darker and different colours.

The three lighting levels are also used to dim the computer system colours. The system colours will be restored when the charting system is exited.

To change the screen brightness and contrast, select the **Chart** option from the main menu and **Colour** from the drop-down menu. Select the desired colour scheme and then press **OK**.

Note: if you select the night colour scheme during bright light conditions, it may be very difficult to see the dialog to re-set colours to the day or dusk colour schemes. Be careful when choosing this colour scheme during daylight.

The final colours used for each selection vary depending on the chart type in use, for example ARCS charts have preset colours defined by the UK Hydrographic Office, and may vary between charts. Livechart colours are set by the program and are the same for each chart.

Chart Catalog

The chart catalog allows you to:

- Browse a list of the available vector charts for your system giving details of chart number, chart scale, title, date of issue etc. You can add selected charts to a 'pick list'
- View the approximate area covered by each chart on screen
- To interrogate each chart visually by clicking over the on screen chart box, to add the selected chart to the pick list.
- To visually select all the charts covering an area, including those covering the area (smaller scale) and those within the area (larger scale) charts. To add selected charts from the list to the pick list.

The printed output can be used to easily order any charts you require.

There are three types of chart catalogs available:

- Livechart vector charts + value packs
- ARCS raster charts + value packs
- BSB charts

Using the Chart Catalog

Note: do not enter or use the Catalog while using seaPro for navigation. This is because the Catalog reduces or obscures important navigational chart data.

- 1) From the main menu select the **Chart** option.
- 2) Select **Catalog** from the drop-down menu.

Your chart display will be re-drawn with a set of labelled chart boxes; the chart number is shown in the left-hand corner of each box. If a number does not appear, simply zoom in to the displayed area as the chart numbers only appear at certain zoom levels so as to prevent crowding of the screen

Any chart you have already purchased and installed in your system will be shown by its surrounding being coloured and not grey.

The Catalog Toolbar will also appear;

Toolbar Functions



- its buttons have the following functions:



Create a new pick list

A Pick List is where you store details of charts you may like to buy. A variety of convenient methods for adding charts to the Pick List are shown below. You may only have one Pick List active at any one time and creating a new one will delete any that are already in existence



Further information on a chart

Click over a chart that may be of interest to you. A window will appear giving details of the chart. If this chart is of interest, you can click on the button to add this chart to your Pick List, otherwise, click on the Cancel button.



View the chart catalog in text form

Although many may prefer to choose charts graphically, seaPro's Catalog also allows selection of charts from lists. This button lists all charts in the Catalog. From here, they may be selected and added to the Pick List. You may select just one, or several charts using the standard Windows selection methods. When selection is complete, click on the Add selected charts to pick list button. This can be done multiple times if required.

The display can be ordered differently by clicking on the titles for each column, a second click on the same title, will reverse the order (ascending and descending orders).



View the pick list of charts required

After you have added charts to the Pick List, you can have a look at the list to review the charts you are interested in. If there are charts that you do not want, simply select the charts, and press the **delete** button.

Once you have finalised the Pick List, you can print out the list of charts for purchase by pressing the **Print** button. When you have finished using the Pick List, select the **Finished** button to save any changes you have made, or the **Cancel** button to discard them.



Notice to Mariners update checker

This feature will check all of your charts against the latest catalog of livecharts, giving you a list of your charts with outstanding notice to mariners on them. To use this feature you can visit the Euronav Website and download the latest ".cat" file. This file can then be pasted into:

C:\ProgramFiles\Euronav\seaPro2000\Catalogs\Livecharts



Select all the charts in a defined area

This facility allows you to easily select all the charts covering a given area.

Click to select this option and click close to the required area. Move the mouse to create a rectangular selection box and click again. A chart view box will appear showing the selected charts.

Charts marked with a [] symbol are all contained within the required field.

Charts marked with a][symbol all cover the area but at a smaller scale.


As before, click to add these charts to the pick list, print out the list, or **Finished** to cancel.



View chart folio packs

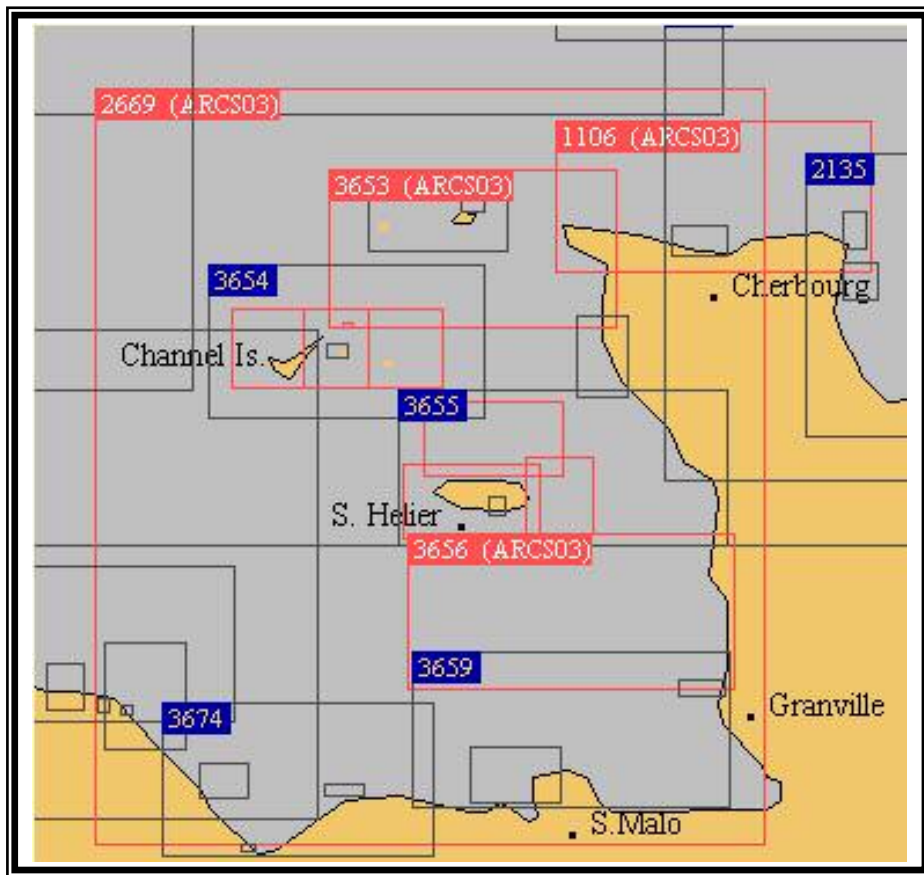
Special chart packs offer any easy and convenient way to purchase your charts. They cover popular areas and have been designed to give good navigational coverage. They are also cost effective compared to buying charts singularly. Packs are available both for Livecharts and ARCS.

A dialog appears that allows the selection of the packs to be view (one or more at a time)

To use this tool you should select the  button from the tool bar. The following window will open, allowing you to select one or more folios, which you can either view graphically as boxes or as a list.



The charts that are in the pack(s) are displayed hi-lighted in red:



seaPro contains very powerful facilities for planning passages and for evaluating the effect of the tide on those passages. It is possible to produce in seconds a full tidal passage-plan that may take hours to produce by hand; and to produce several alternatives equally quickly in case expected conditions change.

Routes may be stored for later re-use, modified, reversed etc., you can even do your passage planning ashore using seaPro and then transfer your route to a handheld GPS for use on-board smaller vessels.

Tidal passage planning with seaPro is a three-stage process:

- **Create a Route** – choose or create a sequence of waypoints for your intended passage
- **Set up and calculate the Plan** – use seaPro to calculate the effect of the tide on your intended route for a particular parameters
- **Review/Modify the Plan** – examine expected ground track, ETA etc., if unsuitable, re-plan with different departure time etc.

Waypoints

seaPro's passage facilities are waypoint based, a waypoint may be defined for the purposes of this User Guide as a position on the oceans surface, referenced by Latitude (LAT) and Longitude (LNG).

On the PC, this LAT and LGN position is stored, along with a reference number and a description, in a waypoint file on your computer's disk drive. You may have as many waypoint files as you like on your computer and each file may have as many waypoints in it as you like, subject to availability space on your disk drive.

It is a good idea to have several smaller waypoints files, covering different areas, rather than one big file, containing all your waypoints.

Creating a waypoint file

Select **Waypoints** from the main menu and **New** from the drop-down menu. A dialog will appear on the screen and you will be asked to specify a name for the new file to hold your list of waypoints. Type in the name of the file and click on the green tick button.

seaPro will create an empty waypoint file for you to add your waypoints to.

Click on the **Insert** button to add your waypoint. (see Adding Waypoints, below).

Selecting a existing waypoint file

- Select **Waypoints** from the main menu and **Select** from the drop-down menu. You will be presented with a list of the waypoint files stored in seaPro's Routes folder on your disc drive.
- Select the file you want to use and click on the **green tick** button.

Your chosen file is now the active waypoint file, any waypoints you create will be added to this file.

You can look at your waypoint file at any time by selecting **View** from the Waypoints menu.

Adding Waypoints

With seaPro, you can create waypoints in several ways:

- 1) Type in a known position, maybe from an almanac, cruising guide or pilotage notes

View the waypoint file, click on the **Insert** button and type a description in the box. Enter the LAT and LNG position of the waypoint, when complete, click on the green tick button.

Note: seaPro checks you have entered a valid position for each waypoint – it will not store a waypoint if you have entered the LAT LNG position incorrectly:

A waypoint to be added at 50 degrees, 30 minutes North and 1 degree, 23.456 minutes West should be entered as follows:

050 30N and 1 23.456W

You must use the zero key when entering zeros, not the letter O key.

- 2) Point and click. Select **Waypoints** from the Main menu and **Add** from the drop-down menu.

When you have clicked on a position, seaPro will ask you to enter a description, having filled in the LAT and LNG for you automatically. Click on the green tick when complete.

- 3) Alternatively you can create waypoints from your current route file by selecting **Add to Waypoint Database** from the **Route** main menu.

Editing the current waypoint file

Select **Waypoint** from the main menu and **View** from the drop-down menu. You will be shown a list of waypoints in the current waypoint file. You may choose to:

Delete a waypoint – Select the waypoint you would like to delete and click on the “trashcan” button.

Edit a waypoint - select the waypoint you would like to edit and click on the **Edit** button. Modify the description or position of the waypoint and click on the green tick button.

Move a waypoint - select the waypoint you would like to move within the waypoint file, click on the **Move** button. Then click where you would like to move the waypoint to and click on the **Move** button.

Sort the waypoints file – click on the **Sort** button to sort your waypoint file alphabetically, according to description.

Deleting a waypoint file

Choose **Select** from the Waypoint menu, then select the name of the file you would like to delete. Click on the **trash can** icon and seaPro will ask you to confirm the deletion before it permanently removes that file from your system.

If you have deleted the current waypoint file, it is a good idea to select another file to use now, then click on the green tick button.

Transferring waypoints to and from your GPS

Some GPS units are able to send and receive lists of waypoints to and from a PC with a suitable interface cable. Check the documentation included with your GPS to see whether it has this capability.

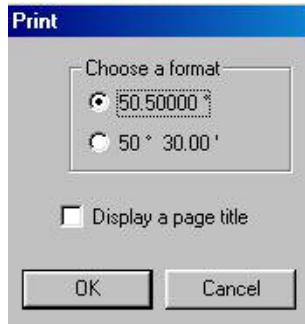
Due to the vast number of GPS units on the market and their varying capabilities, Euronav cannot guarantee that seaPro will be able to transfer waypoint lists to and from all GPS units. It is recommended you check with your dealer for advice if your GPS is unable to interface with seaPro.

If you wish to load waypoints from your GPS into seaPro, you will need to connect them with a serial data cable such as that provided with your package. It is recommended that you create a new waypoint export mode to import the waypoints into. Put the GPS into its waypoint export mode and then select **Receive from Nav** from the **Waypoints** Menu. When you have completed receiving waypoints, click on the **green tick** button. You may now edit the waypoint list.

When sending waypoints to your GPS, put the GPS into its waypoint import mode and then select **Send to Nav** from the Waypoints menu. A dialog will ask you whether you wish to send waypoint names or just numbers (many GPS units are unable to handle long waypoint names). Enter the number of the first waypoint to export (or enter -1 to export names) and seaPro will commence sending the waypoints, reporting when it has sent all of them.

Printing Waypoint files

seaPro can print out your waypoint lists to any printer that is installed under Windows. Make sure the current waypoint file is the one you wish to print and then select **Print** from the **Waypoint** menu. seaPro will then present the following dialog:



Select **Display a page open** if you would like each page to be printed with a title showing the name of the waypoint file and when it was printed.

Select the **OK** button to print.

Exporting Waypoint files

seaPro can export lists to a text file on your disc drive. Make sure the current waypoint file is the one you wish to export and then select **Export** from the **Waypoint** menu. You will be presented with an export dialog similar to the print dialog shown above. Select the **OK** button to export the file.

Routes

A route is simply a series of waypoints that you select, either from a waypoint file, or by clicking on the chart, which seaPro can use to create a passage plan from.

Routes are stored in files on your PC's disk drive and you may have as many as you have disk space for. seaPro routes may also contain an unlimited number of waypoints, although it is recommended that you limit the waypoints in your routes to avoid long plan calculation times and excessively complicated passages.

Broadly speaking there are three stages for planning a route ;

- Create the route
- Plan the route
- Review/ modify the plan

Creating a new route

- 1) Select **Route** from the main menu and **New** from the drop-down menu.
- 2) A dialog will appear on the screen asking you to name the route file. You will notice that seaPro has automatically created a route file name, so you do not need to enter a name for the new route, but may do so if you wish.
- 3) Press **Open** to continue. A Route Select dialog will appear on your screen, asking you if you wish to change the log file to match the route you are planning. If you select **No**, seaPro will continue logging to the current log file; if you select **Yes**, a new log file will be created, with the same name as the new route file you have just created. It is usually a good idea to start off with a new log file for each route, so it is recommended you select **Yes**.

seaPro now enters route-creating mode and the Route Toolbar replaces the Main toolbar to show buttons which relate to creating and modifying routes.

You may now start to create your route by adding waypoints. There are three ways you can do this –

Add them graphically

This is the simplest method that produces a basic route containing one or more un-named waypoints. To add them graphically ;

- 1) Choose a chart that shows the area you want to plan your route in.
- 2) Left click on the **Add** button on the route toolbar – you are now in add mode.
- 3) Left click on the chart where you want to place a waypoint.
- 4) Left click again until you have all the waypoints you want. When you have stopped adding waypoints, seaPro numbers each waypoint sequentially
- 5) Right click to exit the Add mode.

Adding waypoints from a waypoint list

- 1) Ensure you have the correct waypoint file loaded (choose **Select** from the Waypoint menu).
- 2) Left click on the **Wpt** button on the Route Toolbar. Your waypoint list will then appear on the screen.
- 3) Choose the waypoint from the list and left click on the **Add** button.
- 4) Continue until you have all the desired waypoints in your route.
- 5) Click the **green tick** button when complete.

Adding waypoints from the chart

- 1) Ensure you have the correct waypoint file loaded (choose **Select** from the Waypoint menu).
- 2) Ensure the waypoints are displayed on the chart (select this from the waypoint menu).
- 3) Left click on the **Wpt** button on the Route Toolbar.
- 4) A dialog will appear, select **chart**.
- 5) Left click on or near the desired waypoint.
- 6) Left click on the waypoint button on the Route Toolbar for more waypoints.

Selecting routes

Once you have created a route file, it may be selected at any time and used as the current route.

To load an existing route from your disc drive., choose **Route** from the main menu and **Select** from the drop-down menu. Choose the route file from the list and select Open.

You may also use this dialog to delete route files that you no longer need. Select the route you wish to delete by right clicking on it and select Delete from the drop-down menu. A Confirm file delete dialog box will appear on your screen. Select **Yes** to delete the route file or **No** if you wish to cancel the deletion.

Modifying Routes

Whichever method you choose to add waypoints to the route, it is likely that once you review the route, you will need to make changes, either inserting extra waypoints or moving the existing ones to avoid hazards such as shallow water or prohibited areas. These changes can be made using the Route Toolbar.

Note if the Route Toolbar is not showing, select Route from the main menu and Modify from the drop-down menu and the Route Toolbar will appear.



Add

- lets you add a waypoint to the end of a current route by clicking on the chart.

Rem	- removes the last waypoint file from the current route.
Del	- lets you delete any waypoint from a route – after selecting this button, the cursor becomes a crosshair. Place this over the waypoint to be deleted and click.
Wpt	- lets you add waypoints to your route from the waypoint file.
Move	- lets you move any waypoint in the route – after selecting this button, the cursor becomes a crosshair. Place this over the waypoint to be moved and click, now move the cursor to where you would like the waypoint to be and click again.
Ins	- inserts a waypoint anywhere in the route – after selecting this button, the cursor becomes a crosshair. Place this over the leg of the route where you would like to insert a waypoint and click. Now move the cursor to where you would like the new waypoint to be and click again.
Nav	- adds a waypoint, which is the vessels current position, to the current route.
Text	- lets you edit the name of waypoints – after selecting this button, the cursor becomes a crosshair. Place this over the waypoint to be edited and click. Enter the new description for the waypoint and click the green tick button.
Plan	- enters the plan setup dialog, in advance of calculating the plan.
Main	- closes the route toolbar and shows the Main Toolbar.

Route utilities

- **View** – select **Route** then **View** to see a list of the waypoints comprising the current route. This window also allows you to add, delete and edit the waypoints included in the route.
- **Append** – select **Route** then **Append** to add a route stored on disk onto the end of the current route.
- **Reverse** – select **Route** then **Reverse** to reverse the order of waypoints in the current route. The reversed route is stored under the file name ROUTE_RV
- **Copy** – **Route** then **Copy** makes a copy of the current route file and prompts you to provide a name to store the file under.
- **Print** – **Route** then **Print** lets you take a hard copy of the current route to any printer installed under Windows. The dialog lets you choose whether to print a title at the top of each paper or not, and whether you want LAT LNG positions printed in degrees, minutes and decimals of a minute, or in numeric format, i.e. degrees and decimals of a degree.

- **Export** – select **Route** then **Export** to export the current route to a text file on your disk drive. The dialog gives you the opportunity to export the route data in numeric format.
- **Send to Nav** – If your GPS is on and connected, and is capable of receiving waypoint type data, **Route** then **Send to Nav** will transmit the current route to the GPS.

Passage Plans

A route is of little use to the navigator since it cannot be used on its own, it is just a useful collection of waypoints relevant to the intended passage. Routes must be planned before they can be used.

Planning, or more correctly “calculating a plan from a route” involves calculating the effect of tidal streams on the vessels course.

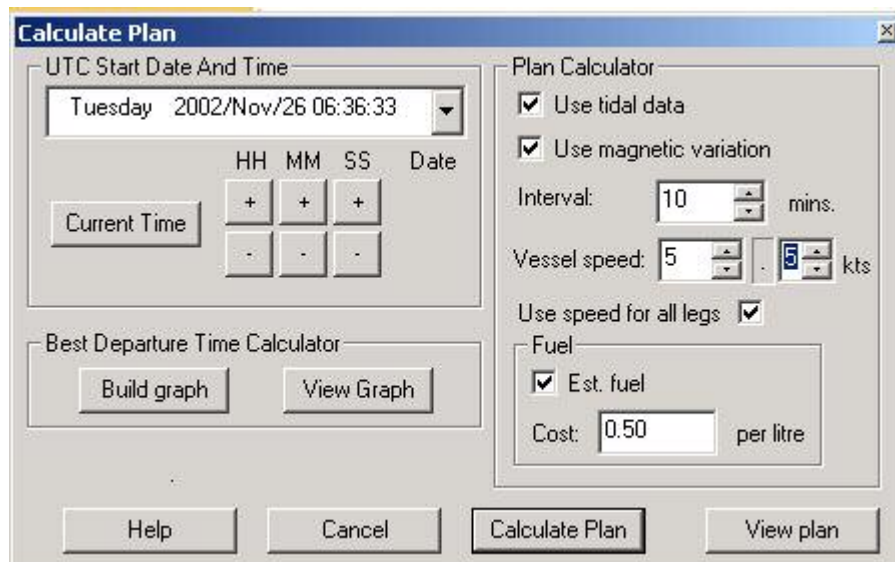
Creating a calculated plan

Once you have added all the waypoints you want to a route, and have reviewed it, it is possible to calculate a plan for the current route.

To plan a route, first of all you must ensure that it is the current one (the current route name is displayed in the bar at the top of the screen). Choose **Select** from the **Route** menu if the route you wish to plan is not the current one.

Once you have chosen the route you wish to plan, select **Calculate Plan** from the **Route** menu. Alternatively, you can click on the **Plan** button on the Route Toolbar.

A dialog will then appear on you screen:



To calculate the plan and to generate course and ETA info, seaPro needs the following information:

- Intended departure date and time

- Your expected average speed (in knots) through the water. If the speed of the vessel varies from this significantly, even if the average remains the same, the tidal plan may be inaccurate and should be recalculated.
- How often you want seaPro to perform the calculations (a good interval for a sailing vessel for a route that should take several hours is 30 minutes of track time. A vessel on a shorter passage, where more accurate calculations are required, for example, when racing, may be 10 minutes of track time). The smaller the interval the more accurate the tidal estimation will be but the longer the calculations will take. The interval should be chosen to be much smaller than the time taken on the shortest leg in your route. For example, if your shortest leg is 5 miles and you have entered a speed of 5 knots then the leg would take 1 hour neglecting tidal effects. A calculation interval of between 1 and 5 minutes would be a reasonable value to use for this plan.
- The dialog gives you the option of whether you want seaPro to take the effect of tides into account when calculating the plan. This is calculated automatically but to cancel this option, simply remove the tick in the box '**Use tidal data**'

Note: Before using this facility you should ensure you have created a tidal atlas.

- The dialog also gives you the option of whether you want seaPro to take the effect of magnetic variation into account when calculating the plan. This is calculated automatically but to cancel this option, simply remove the tick in the box "**Use magnetic variation**".

When completed click the **Calculate** button. You will immediately be presented with the full plan information window.

There are two plan information windows :-

- **Full Plan** - the full information for each leg is displayed in a separate window
- **Overview** - shown as a line per leg, displays all the important information required.

The **Full Plan Information** Window shows the results of planning a route, one leg at a time.

Plan Information - ROUTE-SAT 16 MAR 2002 10_14_48

Leg 2 => 50 14.615N 6 5.962W
 271T 10.7nm => 50 14.743N 6 22.727W

ETD Thu 29 Aug 2002 11:52 (UTC) Speed 9 Kts
 ETA Thu 29 Aug 2002 13:01 (UTC) Tidal Gain/Loss 2.8 %

---Tidal---

Drift	Set	Var.	CTS	Leg	Total	Leg	Total
1.0nm	203	5.1W	281	10.7	15.6	01:09	01:41

Estimated Fuel (Litres)

	Leg	Total inc leg	RPM
Fuel	21.1	30.9	2001
Cost	10.54	15.47	WARNING: Allow for a reserve


Total tidal performance of plan 2.0 %

The following information is shown:

- Start and end waypoint positions and names
- Departure and arrival times
- Leg distance and true bearing
- Tidal effects on the leg

Click on the buttons at the top of the window to move between each legs panels.

It is a good idea to review this plan and if necessary, re-plan the route with different parameters such as departure time, speed through the water etc.

Once you are satisfied with the plan of your route, you can obtain a hard copy by clicking on the **Printer** icon .

Select the **Plan Overview** option from the Route menu and the Window will appear :

Plan Overview ROUTE-SAT 16 MAR 2002 10_14_48

Total
 Time (hrs) 1:41 Dist (nm) 15.6 Fuel (l) 30.9

Leg	BrgT	Dist nm	CTS	Kts	Time(hrs)	Drift	Set	Fuel l	ETA	Positio
=>									Thu 29 Aug 2002 11:20	50 12.
1	065	4.9	070	9.0	00:32	0.0nm	90	9.8	Thu 29 Aug 2002 11:52	50 14.
2	271	10.7	281	9.0	01:09	1.0nm	203	21.1	Thu 29 Aug 2002 13:01	50 14.

Print OK

The **Print** button will print the data in a similar format. It is recommended to set the printer to print in landscape mode.

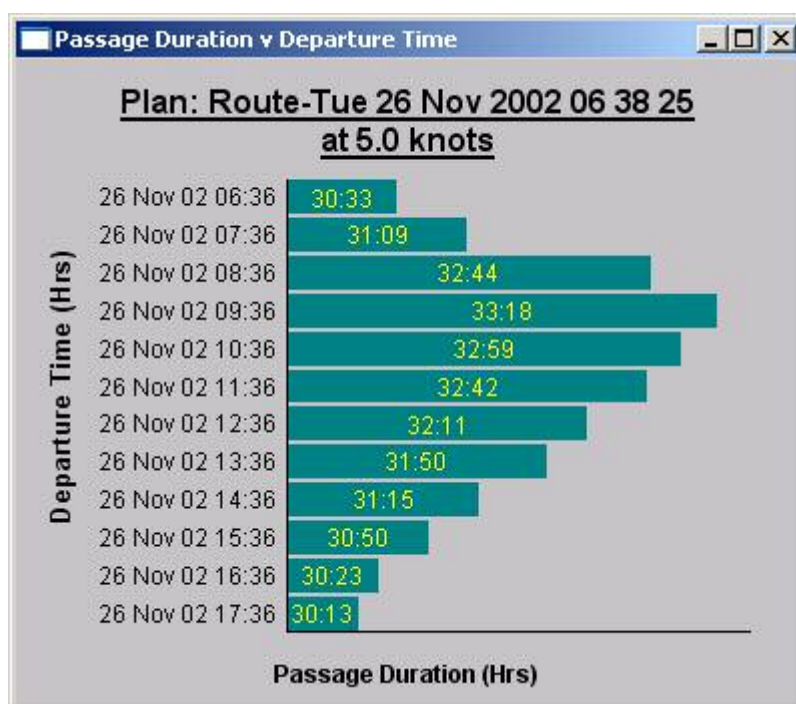
To exit the Plan Overview Window, press the **OK** button.

Passage optimization

As well as calculating routes and expected times of arrival for a given departure date, seaPro can optimise a route to work out the best departure for a given set of conditions. The system calculates the plan 12 times, stepping the departure time one hour at a time, through the next twelve hours, thus covering a full range of tides.

To optimise a route:

- 1) select **Route** from the main menu and **Calculate plan** from the drop down menu.
- 2) Instead of clicking on the Calculate button, click on **Build Graph** or **View Graph**. SeaPro will then perform twelve iterations of the plan calculation and the plot should look similar to the one below:



The optimised plan shows clearly how long the plan is expected to take for a given departure time. The plot gives a good idea of the optimum time to leave to minimise passage time. ETA.s can be back-calculated from tidal gate, or lock opening times to work out a passage plan making maximum use of the tide.

Once you have decided which departure time is best for your passage, make a note of that departure time and re-plan the current route for that day and time.

Fuel Calculations

By supplying seaPro with fuel consumption and cost data for different engine revolutions, the system is able to graph boat speed against range, engine revs and fuel consumption, as well as giving an estimation of fuel usage and cost when a route is planned.

Note: Fuel Calculation is only a calculation of the fuel needed and can be affected by numerous things, so it is important you allow for reserve fuel..

To allow seaPro to calculate the estimated fuel consumption:

- Select **Route** from the main menu and **Calculate Plan** from the drop down menu. The **Calculate Plan** dialog box will appear on the screen.
- Enter all the information needed (including start date and time, vessel speed etc) as described above.
- Make sure there is a tick in the Est. Fuel box.
- Enter the cost of fuel per litre in the appropriate box.
- When all the relevant information has been entered, select the Calculate Plan/
- You will immediately be presented with the full plan information window. As described above, there are two plan information windows, the Full Plan window (displaying information for each leg in a separate window) and the Overview window (displaying the information on a line per leg). The Fuel Calculations part of the Calculated plan dialog box is shown below. The amount of fuel used (in litres) and the cost of the fuel is shown per leg and as a total.

Estimated Fuel [Litres]			
	Leg	Total inc leg	RPM
Fuel	3.3	30.5	1500
Cost	0.84	7.64	WARNING: Allow for a reserve

To, view the fuel calculations for each leg on the same page in a graph format, select the **Plan Overview** option from the **Route** menu and the window will appear.

Multiple passage plans


Because seaPro stores each route on your PCs disk drive, you can plan and calculate alternative routes before going to sea, and call-up the one you wish to use when required by selecting **Route** from the main menu and **Select** from the drop-down menu. From the list of routes in the directory, right click on the route you wish to select and then press **OK**.

Executing passage plans

When you have created your route, planned it and reviewed it, you are now in a position to *execute it* or to start following it.



Once you have a current plan, by either calculating a new route, or by loading a previously calculated plan from disk, you must tell seaPro you wish to start following it.

You need to have the Panel displayed (from the toolbar click on the Panel Icon) and also have the Actual (plan) instrument option displayed within the Panel. If the Actual instrument is not visible, scroll the *Panel* up or down to see it: if it is not on the panel, place the cursor over the blue title bar at the top of the Panel and right click. From the drop-down menu select *Properties*. A Panel Properties dialog box will appear on your screen, Make sure there is an X in the Plan Actual box. To exit click on the *green tick* button.

You can start navigating to the planned route by selecting the  (leg +) button on the *Actual* (plan) instrument option on the *Panel*, or select *Start (Nav)* from the *Route* menu.

SeaPro will work out which waypoint is likely to be next, show that waypoint in red on the chart window, and display information relating to that waypoint and the leg towards it in the fields of the Actual instrument.

Note that waypoints are numbered from zero, i.e. the start of the route is waypoint zero, subsequent waypoints are numbered logically 1,2,3 ...etc

You may manually select a different waypoint as being the “next” waypoint by using the  and  on the Actual instrument on the Panel.

Route Planning whilst en-route

You may only have one plan active at a time, therefore if you are at sea following a route and wish to load and create another route, seaPro will a) stop sending information to the autopilot (because it will now be meaningless) and b) warn you that you need to re-select a leg, i.e. a waypoint to head for.

During this procedure, seaPro will continue to maintain a plot of your vessel position.


Quick Plan

This feature allows you to easily plan a route from the vessels current position. This may be useful, for example, if you receive an adverse weather report, gear damage, or failure occurs or the crew becomes incapacitated – you can very quickly create a route from your current position to a safe haven, plan it, and even send steering information to your autopilot with a few simple mouse clicks.

Reroute

Often you may find that you are not performing as expected against your passage plan and it may be desirable to re-calculate the remainder of the plan from the current position.

For example, consider the case where you have created a 7 waypoint route and are currently heading for waypoint 2. If you decide to abandon part of your trip and want to head straight for waypoint 5, then do the following:

- Use the leg selection button  on the plan actual instrument to select waypoint 5
- Select the *reroute* option on the *route* menu
- Enter a name for the new route
- seaPro will then provide a route directly from the current vessel position to the selected waypoint. The route will also include all other waypoints after the selected waypoint in the original route.
- Create a plan for the new route
- Use the leg selection buttons on the plan actual instrument to select the new waypoint.

Search and Rescue

This creates standard SAR patterns taking tidal information into account. The **search and rescue toolbar** helps you create a quick search pattern. The operator defines three points inside which the search is to be conducted. seaPro will then plan a search pattern giving courses to steer or autopilot control. seaPro will also consider any tidal effects. There is a choice of three popular search patterns available.

To bring up the Search and Rescue toolbar, select **Route** from the main menu and **Show search and rescue toolbar** from the drop-down menu. The toolbar, as shown below, will then appear at the top left hand side of the screen.



- Firstly it is important you open a new route file. To do so, select **New** from the Toolbar. The route file dialog box will appear on the screen and you will be asked to specify a name for the new file. You will notice that seaPro has automatically created a route file name, so you do not need to enter a name for the new route, but you may do so if you wish. Click on the ok button to continue. Then select one of the following search patterns:



- **Step ladder search**



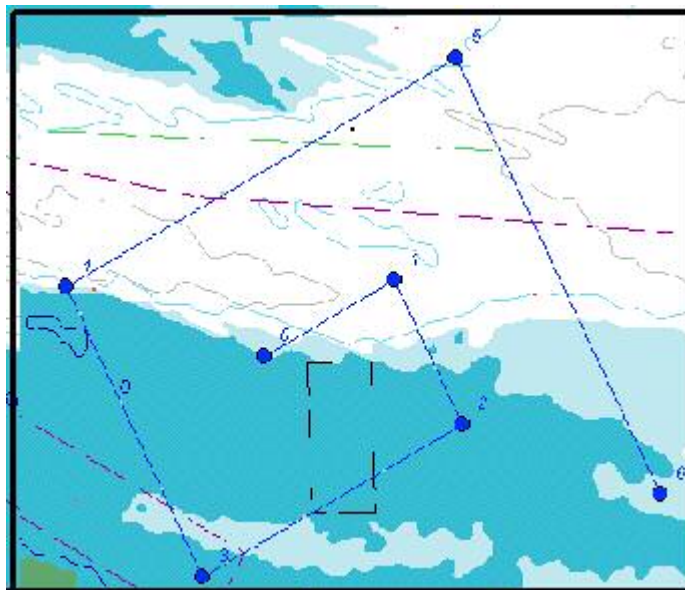
- **Expanding Square Search**



- **Sector Search**

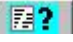
The cursor will change to a crosshair and you will be asked to define your waypoints for the search pattern.

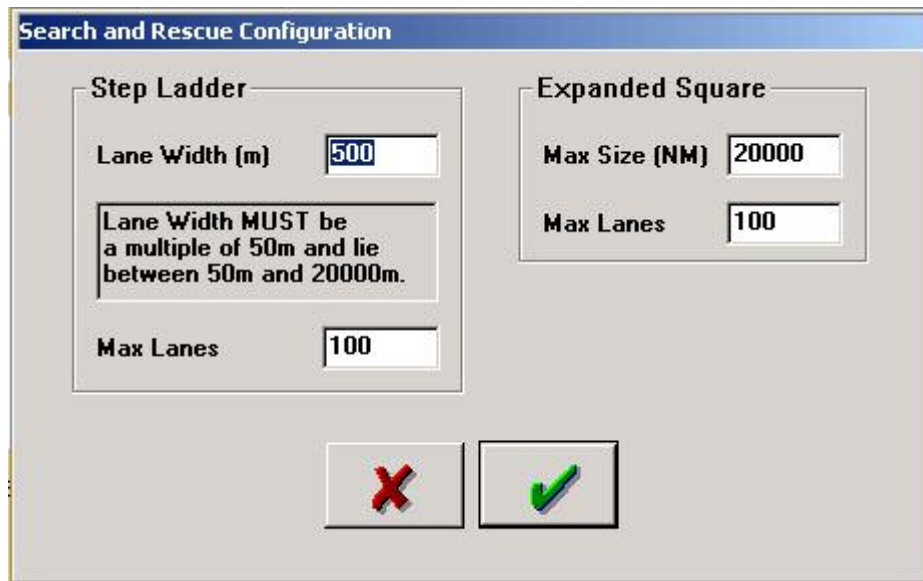
When the waypoints have been entered, the system will create a search pattern depending on the pattern you have chosen from the toolbar. An expanding Square Search, for example, is shown below:



- You can then choose to calculate a plan using the waypoints as a route. To do so, select the **Plan** option from the toolbar and the plan dialog will appear on the screen.

For instructions as to how to calculate a plan, see the earlier section *Calculating a plan*.

Depending on the search pattern you have chosen, you can also edit the lane widths and maximum number of lanes (in the Step Ladder search pattern) and edit the maximum size and maximum number of lanes (in the Expanding Square search pattern). To edit the search route properties select the  option from the toolbar. The Search and Rescue Configuration dialog box, as shown below, will then appear on the screen.



The dialog box is titled "Search and Rescue Configuration" and is divided into two main sections: "Step Ladder" and "Expanded Square".



- Step Ladder section:**
 - Lane Width (m):
 - Max Lanes:
 - A text box contains the instruction: "Lane Width MUST be a multiple of 50m and lie between 50m and 20000m."
- Expanded Square section:**
 - Max Size (NM):
 - Max Lanes:

At the bottom of the dialog box are two buttons: a red 'X' button for canceling and a green checkmark button for confirming the changes.

If you have chosen the Step Ladder search pattern, you have the option of changing the Lane Width (measured in metres).

Note: the Lane width must be a multiple of 50m and be between 50m and 20000m. You can also edit the number of lanes (with 100 being the maximum number of lanes).

If you have chosen the Expanding Square Search, you edit the maximum size of the search square (measured in nautical miles, with a maximum size of 20 000 nm). You can also edit the number of lanes (with 100 being the maximum number of lanes).

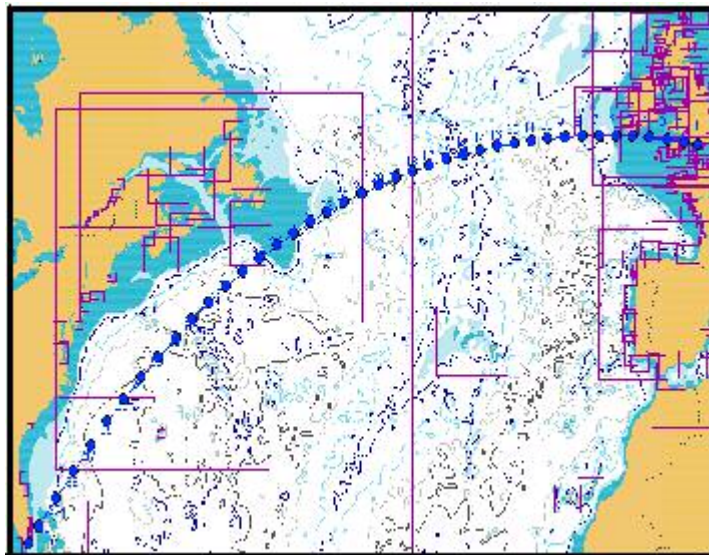
When you have finished editing the search route properties, press the  button to finish the editing, or the  button to cancel the editing.

Great Circle Planning

SeaPro has the capability of Great Circle Planning, making planning an Ocean passage (e.g. trans-Atlantic) very simple. By putting a waypoint at the start and finish of your route, the system will fill in the rest, giving you a great circle track.

To create the route:

- Zoom out (by right-clicking on the mouse) to the map of the world.
- Select the **Route** option from the main menu and **New** from the drop-down menu. The Route Toolbar will then appear on your screen.
- Select the **Add** option on the Route Toolbar and the cursor will then change to a crosshair.
- Left click on the mouse to place a waypoint at your start position, and then left-click again to place a second waypoint at the end of your route. Right-click to finish.
- Then select **Route** from the main menu and **Great Circle Planning** from the drop-down menu. A dialog box will appear on the screen and you will be asked to specify a name for the new file to hold your list of waypoints. You will notice that seaPro has automatically created a route file name, so you do not need to enter a name for the new route, but may do so if you wish. Click on the **OK** button to continue.
- You will then notice that seaPro has created a route for you between your two waypoints, following a great circle route to create the fastest route. Because of the projection of the chart on the screen, this will look like an ark when planning routes longitudinally, as shown below on the route from Portsmouth, England, to the Florida Keys, America.



seaPro contains sophisticated tidal features as standard. Where suitable tidal data is available, you may obtain very accurate tidal passage plans, observe tidal streams in real time and examine times and heights of high and low water worldwide.

You may even add and edit your own tidal information.

Note; Tidal prediction is just that – prediction. There is no guarantee as to the accuracy of tidal data used within seaPro. The prediction can be dramatically affected by changes in atmospheric pressure and other weather conditions, locally and many hundreds of miles away.

Tidal Atlas

SeaPro's tidal information is obtained from tidal "diamonds", digitised from the original official admiralty paper chart. Most Livecharts contain some tidal diamonds and this information is extracted from the charts by seaPro and built into a Tidal Atlas. Of course, you can only get the tidal diamonds included with each Livechart, so if you want to get the best accuracy, you need to buy larger scale charts to get the accuracy of those charts tidal diamonds. Alternatively, a full tidal atlas is available as an option, which includes tidal diamonds extracted from all Livecharts which have them. This is a good option because it gives you access to better accuracy to tidal calculations without meaning you have to buy all the charts covering your area.

SeaPro displays tidal stream arrows independently of the chart type, i.e. if you have access to the seaPro tidal atlas, streams will show on top of both raster and vector charts.

Creating the Tidal Atlas

- Select **Chart** from the main menu and **Folio** from the drop-down menu.
- Select the **Create Tidal Atlas** button

SeaPro extracts tidal information from each Livechart installed on your system. This may take some time, especially if you have a large number of Livecharts on your system. You should re-create the tidal atlas every time you add a new Livechart.

Tidal Atlas Toolbar

This Toolbar gives you access to seaPro's tidal stream functions and is accessed by selecting **Tides** from the main menu and **Tidal Atlas** from the drop-down menu. It is a floating Toolbar; it will stay on top of the other windows and may be moved to a convenient location so as not to obscure important chart data.

You will also see a number (quantity depends upon how many Livecharts you have) of blue arrows, each one representing the rate and direction of the tidal stream at that point at the current time.

Note: all tidal operations are based on UTC time, irrespective of the current local time.

Toolbar Functions

The functions of the Tidal Atlas Toolbar are as follows;



Shows the tidal stream one hour later (UTC time is shown in the Tidal Atlas Toolbars title bar).



Shows the tidal stream one hour earlier (UTC time is shown in the Tidal Atlas Toolbars title bar).



Calls up a dialog which allows you to choose a particular date and time for tidal stream display, this dialog also allows you to select the current system time for Atlas operation.



Turns “atlas Auto Update” on or off. As standard, this feature is turned on, so the tidal diamond will update in real time. You can choose how often the tidal Atlas display is updated when in automatic mode by selecting Chart from the main menu, settings from the drop-down menu and then *Cartography 2*.



Lets you get an idea of the rate and direction at a location between diamond arrows. Note: this is only a rough estimate.



Allows you to display just the tidal arrows, or to show the rate and direction of stream as well as for each diamond.



Each tidal diamond will have a variable accuracy – some may be regarded as being accurate over a very wide area, some are only accurate over small geographic area. This button lets you see an estimate of the area the diamond is considered to affect.

Tidal Curves

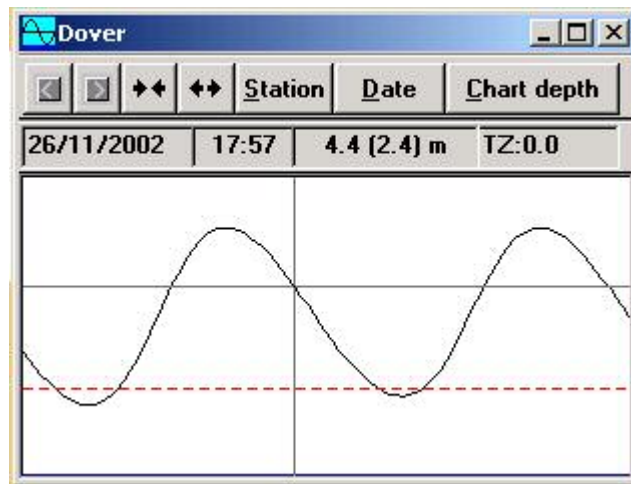
In addition to comprehensive tidal stream information, seaPro also lets you check the time and heights of high and low water at selected ports worldwide.

Each port has a set of harmonic constants which remain relatively constant over time. The change in ports tidal curve over time (as a result of varying planetary influences) is defined by the angles and factors from table VII of the Admiralty Tables (ATT).

Note: Euronav publishes a worldwide tidal curve database disk each year, which contains this information, this is available as an option – contact your local agent or Euronav for more details.





The results from the SHM are only predictions and the actual depths and times may vary considerably from the predictions generated using this method. An adequate safety margin both in time and for depth should be allowed.

To display the Tidal Curves Toolbar, select *Tides* from the main menu and *Show Tidal Curve* from the drop-down menu. A dialog box will then appear on the screen.



This shows a tidal curve for the current selected port for the current date covering a 3, 6, 12 or 24 hour period.

The functions of the Tidal Curve Toolbar buttons are as follows:

-  Steps the display back in time.
-  Steps the display forward in time.
-  Displays the curve plotted over a smaller time period (minimum 3 hours)
-  Displays the curve plotted over a larger time period (maximum 24 hours)
- Station** Lets you choose the port whose tidal curve you wish to view. Also allows editing of the internal database of ports (see below).
- Date** for choosing the date for tidal curve display
- Chart depth** lets you add an onset for any known chart depth. This then allows an estimated depth for any point, such as a bar or an anchorage to be displayed. The chart depth is shown on the tidal curve as a solid blue rock below the main curve. The vessels draft is show as a dotted red line.

Use of the tidal curve is very straightforward and can be done in two ways:

- use the mouse to drag the intersecting lines to the date and time required and read off the depth
- use the mouse to drag the intersecting lines to the depth required and read off the date and time.

Two values appear in the depth box. The first is the height range (the value that would be obtained from the standard tidal curve). The second figure (shown in brackets) allows for the drift (if entered for your vessel) and the chart depth.

Editing the Ports database

If seaPro doesn't already hold tidal curve details about a port you are interested in, you can add your own port as long as you have access to the simple harmonics from the Admiralty Tide Table (or similar).

Click on the Station button on the Tidal Curve Toolbar to show the Port Selection dialog. Click the Add button and fill in the details as shown on the tables, making sure you add the port name and its number and time zone in addition to the harmonics themselves.

Similarly if updated harmonics become available for a port, which is already in seaPro, you may select *Edit* and make any necessary changes. Click the green tick button to save and exit.

High Water Database

seaPro uses an annual tidal database, which allows it to perform its tidal calculations.

A different database is required for each year and for the following sailing areas:

EU – Europe

NZ- New Zealand

AS – Australia

CA – Caribbean

To enter the data you should complete the following:

- I. Run the annual tidal data update program, as supplied by your distributor or Euronav.

Start seaPro and select *Tides* then select *Tidal Atlas properties*. This will open a new window. From this window select *ADD* and then select the database you have added. E.g. HW2002

This menu list contains setup parameters for seaPro, these should be changed with care as they will effect the operation of seaPro.

Navigation Properties

The navigation properties sheet allows you to set up your own preferences for the way in which seaPro handles navigational data input and output and displays it on your charts.

Note: It is suggested that you also look at Appendix B – Connecting a GPS and Instruments in collaboration with this chapter.

The property sheets contains a number of pages:

Navigator

This sheet allows general navigation properties to be configured, master controls for NMEA input and output and autopilot control.

- **NMEA On** – enables NMEA input and output control via the PC serial communication port. This allows external instruments such as a GPS receiver and instrument systems to supply data to seaPro. It also allows seaPro to supply data to an autopilot but only if the Transmit box is also checked.
- **Transmit** - Check the Transmit box to allow seaPro to send NMEA data out of the PC to external instruments, such as an autopilot.
- **GPS Warnings** - allows any changes in the status of the data supplied by an external GPS receiver to be shown in a pop-up window.

- **Autopilot** - This group allows you to define how seaPro will act when it detects that you have reached the end of the current leg in the active plan.

- **Auto advance** - instructs seaPro to determine when your vessel has reached a destination waypoint and automatically advance the active plan to the next leg. Uncheck this box to make seaPro stop and show a warning once your vessel has reached the destination waypoint, before proceeding to the next waypoint (recommended on high speed craft to avoid sudden course changes).

- **Leg** - shows the leg currently being used in the active plan. Changing this to a different leg number will cause seaPro to change to that leg.

- **Waypoint arrival circle** - the distance from a waypoint which seaPro is to consider as equivalent to your having reached that waypoint - a default radius of 0.1nm is assumed.

Track

Allows the vessel track and track log facilities to be configured.

Track recording group

- **On** - enables the vessel position to be recorded to the current track log file.
- **Use memory** - allow seaPro to maintain a list in memory of the most recent 1000 vessel positions received. This allows a smoother curve to be drawn on the charts even when the track recording interval is large. For example, if position is received every second but only recorded every 30 seconds, the *Use memory* facility allows the intermediate 29 position points to be temporarily drawn on the chart. The list is reset when seaPro is first started.
- **Interval** - sets the track recording frequency - the smaller the interval, the smoother the curve displayed on the charts but the larger the track log file.
- **Distance** - allows the track recording to be inhibited until the vessel has moved at least the specified distance, allowing smaller track log files while the vessel is stationary.
- **Track width** - allows port and starboard track lines to be draw either side of the central vessel track at the total spacing specified. Set the value to 0 to disable these lines.

Extended track lines group

An extended track line is a line drawn from the current vessel position to where the vessel will be after a specified interval if the current course and speed are maintained. The *X-Line* button on the Toolbar allows a selection of time intervals in minutes to be specified. The fixed option draws a fixed length line which is not related to time or vessel speed.

- Check the Enable box to allow seaPro to display extended track lines on the charts when the vessel is actually moving.
- Check the COG box to display an extended track line using the current Course Over the Ground of the vessel.

Note; if the heading of the vessel is available then the vessel outline can be setup to be the vessel heading and the extended heading line setup as COG will give a visual representation of the effect of tide on the vessel.

- Check the Gyro box to display an extended track line using the current true heading from NMEA or true heading calculated from magnetic heading and magnetic variation.

Parallel Indices

These are additional extended track lines drawn parallel to the central extended track line.

- Check the **COG** box in the parallel indices group to display the lines using the current Course Over the Ground of the vessel.
- Check the **Gyro** box in the parallel indices group to display the lines using the current true heading from NMEA or true heading calculated from magnetic heading and magnetic variation.
- **Width** - set the total separation between the port and starboard lines in the width edit box.

Log

The Log page of the Navigation Properties property sheet allows the vessel log recording facility to be configured.

- Check the **On** box to turn the overall vessel logging facility on. If this box is not checked then no logging can take place. Note that this does not affect the track log in any way.

- **Log recording sub-groups**

The Log recording group contains a number of log recording sub-groups. Each one enables the recording of position plus certain other parameters to the vessel log - the exact list is displayed in the sub-group title. The choice of which group(s) to use is up to your requirements and the spread of data available from your external instruments.

Each sub-group contains a box, which must be checked to enable it. The time field allows the logging interval to be specified; the number fields can be edited directly or the spin controls can be used to change values step by step. Clicking and holding a spin control makes it cycle rapidly through the allowable range of values.

- **Log File Daily Name Change group**

Check the **Off** radio button if you want seaPro to use the same log file name every day. In this mode, the log file name will only be changed when you select another log file or create a new one.

Check the **At midnight UTC time** button to make seaPro generate a new log file name automatically at midnight UTC time. This ensures that log files do not get too large and provides a handy daily breakdown of your vessel movements. This affects the vessel log and the track log. The file name chosen is always of the format YYMMDD00 (where YY is the lowest 2 digits of the year, MM is the month number in the range 01 to 12 and DD is the day number in the range 01 to 31).

Check the **At midnight local time** button to make seaPro generate a new log file name automatically at midnight local time. The details are as per the **At midnight UTC time** described above.

- **Log File Type**

Check the **Additional ASCII text** file box to record a plain-ASCII text version of the vessel log and track log files in addition to the normal compact binary files. Most

users will not need to use this facility, but it can be useful for those wishing to quickly export log data to other programs such as spreadsheets for analysis purposes.

Display

This controls what information is displayed and how it is displayed.

Plot options

- Check the **Route** box to display the active route on the charts.
- Check the **Route text** box to display the waypoint names for the active route on the charts.
- Check the **Track** box to display the active track log on the charts.
- Check the **Previous track** box to display the currently selected previous track log on the charts.
- Check the **Plan** box to display the active plan on the charts.
- Check the **Plan text** box to display the leg text information for the active plan on the charts.
- Check the **Plan ETA** box to display estimated time of arrival at each waypoint
- Check the **Waypoints** box to display the active waypoint database on the charts.
- Check the **Waypoint text** box to display the waypoint names for the active waypoint database on the charts.

Vessel rings

This group allows the configuration of the range rings drawn around the current vessel position on the charts.

- Check the **On** box to display range rings on the charts.
- Check the **Autosize** box to fix the size of the ring regardless of the scale or level of zoom of each chart. Uncheck the **Autosize** box to make the radius of the ring exactly equal to the size specified in the Radius field as the charts are zoomed in and out.
- Set the **number** of concentric rings using the Number field.

Vessel shape

This group allows the configuration of the vessel shape drawn on the charts.

- Check the **On** box to display the vessel shape on the charts.
- Check the **Show as ring at < 1knot** box to revert to showing just a ring around the vessel position when the vessel is not moving. This alleviates the problem of trying to show a vessel heading when the current heading is not determinable.
- Check the **Show as unscaled** box to display the vessel shape scaled to a fixed size in pixels regardless of the scale or level of zoom of each chart. The size specified in the vessel shape file is scaled by the value in the Magnify field.
- Uncheck the **Show as unscaled** box to display the vessel shape equal to the scale size specified in the vessel shape file. The vessel shape will then change to the correct scaled shape for the current chart view. The accuracy will depend on the chart scale and amount of over zoom. Magnify has no effect in this mode.

The default is on.

True heading group

The options in this group allow you to decide how seaPro will obtain true heading for use when plotting the vessel shape. Choose one of the following.

Note; that if the chosen data source is unavailable the vessel will be plotted as a black circle rather than a shape:

Gyro - true heading is taken from NMEA, if available, such as from a gyro instrument.

Use COG - the current Course Over the Ground of the vessel is used instead of true heading.

Calculate from magnetic - the current estimate of magnetic variation is used to correct the magnetic heading taken from any NMEA HDM sentence received from an external instrument.

Chart auto-scrolling

To scroll the chart so that the current position of the vessel is always shown, the auto chart scrolling is used. Selecting the **chart auto-scrolling** button on the graphic toolbar will cause the vessel to always be shown on the screen.

The chart scroll position is set at approximately 20%, i.e. the chart will be scrolled when the vessel is within 20% of the edge of the chart display. The chart is then scrolled so that the vessel is placed in approximately the centre of the chart display.

Scroll when x % of chart edge

Use this to select when 'look ahead' is Not enabled. This sets how close the vessel can move to the edge of the display before the chart is scrolled. 45 % is close to the centre of the display, 1 % is at the edge of the chart.

Look ahead

The look-ahead settings allow the vessel to be scrolled so as to display more information ahead of the vessel (based on its current heading). The facility will only operate if there is valid COG input and the SOG is greater than 2knots (so value of COG is valid).

On Scrolling - position vessel x % of chart

Use this to select how far from the edge of the display the vessel should be displayed after a scroll. 45 % is close to the centre of the display, 1 % is at the edge of the chart.

Slider bar

Use this to select whether the vessel is moved or whether the vessel's position is fixed on the display and the chart is scrolled underneath.

The slider can be moved to the left, to allow the vessel to continuously move across the chart till the scroll point is reached, or to the right to allow the vessel remain fixed.

These two settings correspond to the ECDIS terms 'True motion' – vessel moving across chart and Relative motion display vessel remains stationary.

Moving the slider between the two ends, gives a relative mix of the two. Here the vessel will be allowed to move across the chart for a certain distance and then the chart is scrolled underneath it.

This has the advantage of reducing the processing power required for the full chart scroll especially if databases (logs and gxf files) or multiple charts and cells are being displayed.

NMEA Rx

The **NMEA Rx** page of the Navigation Properties property sheet allows the handling of various NMEA sentences to be configured.

Note that this page does not prevent reception of these sentences, it merely determines whether or not seaPro will actually use the data from them if and when they are received.

The NMEA monitor window shows all incoming NMEA sentences regardless of whether or not they are enabled in the NMEA Rx page. This may prove helpful in identifying which NMEA sentences are sent by your GPS receiver.

Position sentences

This group allows the selection of the main source of vessel position information for seaPro. It is possible to select only one, so you will need to experiment when setting up your system if you do not know which NMEA sentences are sent by your GPS receiver. Ideally setup your GPS receiver first then match the sentence being output by the GPS within seaPro.

- Check the **RMC** box to use position, COG and SOG from the RMC sentence.
- Check the **GGA** box to use position and GPS status from the GGA sentence.
- Check the **GLL** box to use position from the GLL sentence.
- Check the **GCA** box to use position from the GCA sentence.
- Check the **GXP** box to use position from the GXP sentence.
- Check the **Sat.Com.** box to use position from the satellite communications interface. This facility is not available on all versions
- Check the Any of the above if you are not sure which sentence your position fixer is using.

Note: If you are using differential GPS, you should not select this option, as having the GGA and any another sentence present may cause the navigate change of status warning messages to be repeatedly displayed.

Ignore from talker II option

If you connect your GPS directly into seaPro, and then output this to your Integrated Instrument (II) system, the II system may resend this information back to seaPro. This is then resent back to the II system, resulting in a 'howl round' effect. This may result in lost information or corrupted position information being sent from the II system as it struggles to keep up with the data overload.

To overcome this effect, select Ignore from talker II, all position and COG/SOG information will be blocked that has the talker ID of II (Integrated Instrument). Information from your GPS input will not be effected.

If the II system is the originator of the position information, then you should Not use this option, but make sure seaPro is not re-sending position information.

Other group

This group allows the selection of other instrument NMEA sentences for decoding, displaying in the instrument panel and writing to the vessel log. Choose as many as you require.

- Check the **RMC** box to use just COG and SOG from the RMC sentence. This option is unavailable if you have already selected RMC in the Position group.
- Check the **VLW** box to use log from the VLW sentence.
- Check the **VHW** box to use speed and heading log from the VHW sentence.
- Check the **VWR/MWV** box to use wind speed and angle from the VWR and MWV sentences.
- Check the **DBT/DPT** box to use depth from the DBT and DPT sentences.
- Check the **VTG** box to use COG and SOG from the VTG sentence.
- Check the **VDR** box to use tidal set/drift from the VDR sentence.
- Check the **MTW** box to use water temperature from the MTW sentence.
- Check the **TOB** box to use battery voltage from the TOB sentence.
- Check the **HDT** box to use true heading from the HDT sentence.
- Check the **HDM/HDG** box to use magnetic heading from the HDM and HDG sentences.
- Check the **MTA** box to use air temperature from the MTA sentence.

Max GPS speed

Some GPS/PC configurations can cause occasionally jumps in the GPS values received. These jumps are very transient (<1 second) and large and so obviously incorrect that they do not present a navigation problem. They can, however, cause erratic scrolling of the chart (auto-scroll mode) and create false entries in the log as well as untidy tracks.

To filter out these jumps seaPro monitors the maximum rate of change of position. Enter the Max rate of change (GPS speed) you expect, a value of 500 kts. is good for most sea or ground applications. The value should be a lot greater than your expected max speed as the time difference used to calculate the value is short (< 1 second) resulting in very approximate rate changes.

The delay value controls over how long a period the speed is checked for. After this period of time the current position is considered to be correct. As the values are transient a value of 5-30 seconds is suitable.

Note: If the position on the GPS display is also incorrect, then there is probably a fault with the GPS system itself.

Special Air operations

This allows the product to be used in an aircraft allowing GPS altitude to be interpreted as depth values – and displayed in the appropriate instruments.

NMEA Tx

The NMEA Tx page of the Navigation Properties property sheet allows the transmission of various NMEA sentences to be configured.

Position/speed group

This group allows the selection of one or more position and speed NMEA sentences to transmit. The position and speed used is the latest recorded for the vessel for as long as it remains valid.

Echo Rx to Tx group

This group allows selected incoming NMEA sentences to be retransmitted to the active NMEA output port. This is particularly useful when you are not running an NMEA instrument network on your vessel and need to feed information on to other instruments.

Autopilot group

This group allows the selection of NMEA sentences for the control of an external autopilot. Please refer to the manual for your autopilot to determine which sentences are required.

The ***Repeat Interval slider*** sets up the interval at which the set of sentences is sent to the autopilot.

Setting the ***precision for position sentences***

Some earlier GPS sets and autopilots are not able to work with the NMEA 183 sentences that have a position resolution of more than two decimal places. Use this option to set the required resolution (recommended value is 3 for most systems).

Radar

The RADAR page of the Navigation Properties property sheet allows the configuration of data to be received from one or more ARPA Radars connected to a PC serial port and the manner in which seaPro is to use this data.

Receive NMEA Sentences

This allows the selection of various NMEA sentences that may be sent by an ARPA RADAR. seaPro will accept the common NMEA sentences for own ships data and tracked targets which are output by most commercial and leisure systems.

- Check the ***OSD*** box to enable reception and use of the Own Ships Position.
- Check the ***TTM*** box to enable reception and use of the list of targets tracked by the ARPA RADAR

Target Display Group

This group allows the display of tracked targets to be controlled

- Check the ***Show track*** box to show the recent track followed by each target on the charts
- Use the ***target colour*** drop-down list to select the colour used for the targets drawn on the charts
- Use the ***Track colour*** drop-down list to select the colour used for the track followed by targets drawn on the charts.

Note: the number of targets displayed is limited to 32.

Logging Group

This group allows the control of tracked targets data to be logged to the RADAR log file.

- Check the On box to enable the log recording.
- The time field allows the logging interval to be specified; the number fields can be edited directly or the spin controls can be used to change values step by step. Clicking and holding a spin control makes it cycle rapidly through the allowable range of values.

Alarm Areas group

This group allows you to select whether or not RADAR alarm areas are to be shown on the charts.

- Check the Own vessel area box to show the alarm areas around your own vessel.
- Check the Defined areas box to show the user-defined alarm areas.
- Use the alarm radius edit box to specify the alarm area radius, which is common to all alarm areas.

Note: changes made to the settings of the controls in these pages will only be applied if the OK button is used to close the property sheet.

Radar band switching

This feature enables vessels fitted with both an X band and S band ARPA radar to show either radar targets on the chart screen.

It is necessary to select the correct com port that each radar is connected to, to enable seaPro to know which are the X band targets and which are the S band targets.

When the correct ports are allocated the appropriate radar may be chosen under the **Radar** menu. Choosing the X band option will cause the X band tracked targets to be displayed, whereas selecting the S band option will cause the S band tracked targets to be displayed. Targets marked on the screen will now be preceded by either X or S to indicate which radar they come from (e.g. X 01, X 02 or S 01, S 02 etc).

Selecting serial communication ports

Select the Serial ports option from the **Setup** menu.

The Port Assignment group on this page shows the serial ports currently selected, note:

- The NMEA Rx check boxes show from which serial ports incoming NMEA sentences will be accepted.
- The NMEA Tx radio buttons allow the selection of one serial port from which outgoing NMEA sentences such as autopilot commands will be transmitted.

- The Marker Tx radio buttons allow the selection of one serial port from which outgoing target marker flag NMEA sentences will be transmitted. This may be set to the same port as the NMEA Tx port if required.
- The Power Cable check boxes allow serial ports to be set up to provide electrical power to the electronics contained in a Euronav NMEA interface cable when used.

Note: In the seaPro Standard version, only two serial ports may be used to cover all the above options. In the seaPro Plus and Professional versions more than two ports may be used. An error will be displayed if you try to select more than 2 ports on the Standard version.

The Control group contains settings that apply to all serial ports simultaneously:

- Check the Use checksums box to make seaPro reject incoming NMEA sentences that do not have the correct checksum.
- Check the Disable all ports box to turn off all serial ports in seaPro.

Note: Changes made to this dialog do not take effect until the OK button is pressed AND you have exited and restarted seaPro.

Networking

This option is only available on seaPro Plus and Professional versions.

seaPro can share data in a number of ways:

Using a Network dongle (red dongle)

If you have purchased this option you will be able to run more than one copy of seaPro across your network. This allows you to have one set of charts to be used by multiple users.

The licensing for networked charts varies depending on the application. Please call Euronav sales or your local supplier for more details.

Using the network NMEA sharing

Note: this is only available on plus versions and above

If you have a TCP/IP Network, you can share the data received from the NMEA 0183 interface (GPS position, Wind, radar ARPA targets etc) on one computer running seaPro with another computer running seaPro. The system is also compatible with the Euronav Passenger Information system, which can act as a client for seaPro.

The computer receiving the NMEA data is designated the server; all the other computers are designated as being clients.

You need to have a copy of seaPro for each computer (this can be a central network dongle or an individual dongle on each computer).

Before setting seaPro to use the networking facility, please ensure that your network is fully operational and that each computer can see each other. You will also need to know the network IP address of the computer to be used as the server. If you do not know how to use this, please seek the advice of your network supervisor.

Note: the server can have either a fixed address or one issued by a name server.

Setting up the server

Select **Setup** from the Main menu and **Network** from the drop down menu, then select **Setup NMEA Network** from the side menu. The network dialog, as shown below, will then appear.



Select **Act as server**, then tick the **Auto IP** address (alternatively you can enter the server IP address).

The server port should normally be left at the default value of 720.

Setting up the clients

As for the server (above), but instead of selecting the **Act as server** option on the dialog, select **Act as Client**.

Either enter the fixed IP address of the server or if you have a network with a name server that automatically assigns IP addresses, enter the full name of the server.

When sending over the Internet, a fixed IP address is the easiest solution, however not all ISP will issue a fixed IP address.

You will need to tick the required option button to allow access to the required entry field.

The port value should be the same as the server (default 720).

If the network is operating correctly, the NMEA data being received by the server, data should then appear in each of the seaPros.

Network Route Sharing

Route Sharing across a Network

This feature allows routes and tidal plans to be shared in real time across a TCP/IP network between seaPro navigation stations, such as a fly bridge and main bridge..

One computer is designated the server; all the other computers are designated as being clients. All the clients will use the current route and plan in use by the server. If the route is changed on the server, this is then changed automatically on the client seaPro systems stations

The system can be set up to allow other seaPro stations to become the server (master) on request, or the server can be set up to prevent this i.e. the main seaPro Navigation system always has control.

Note: Setting up of the system does require some technical knowledge of TCP/IP networking. If in doubt, please ask for assistance from your IT consultant/dept. Once set up the operation of shared routes is then very simple.

The route and tidal plan information generated on the server will be sent out to all of the clients. Any changes made on the server will be reflected on the clients. The route sharing is independent of the NMEA data networking facility – for example, a computer that is acting as a server of NMEA data may be a route-sharing client.

You need to have a copy of seaPro for each computer (this can be a central network dongle or an individual dongle on each computer).

Before setting seaPro to use the networking facility, please ensure that your network is fully operational, and that each computer can see each other. You will also need to know the network IP address of the computer to be used as the server. If you do not know how to find this out, please seek the advise of your network supervisor.

Each copy of seaPro will be in one of the following states;

- **Disabled** – not participating in the route sharing
- **Client** – receiving route information from the server
- **Server** – supplying route information to the clients

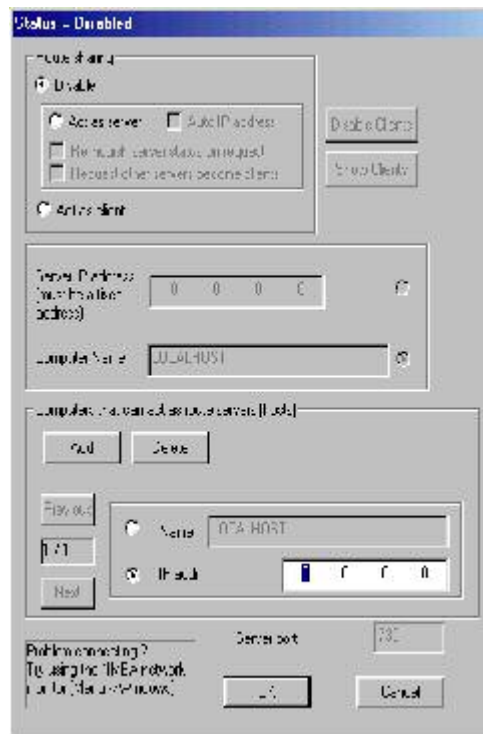
Setting up route sharing

You will need the following information

- ✓ The name or IP address (such as 192.168.0.23) of the computer (or computers) to act as a route servers

Setting up the route server

Select ***Setup*** from the main menu and ***Network*** from the drop-down menu. Then select ***Setup route network*** from the side menu. The dialog as shown below will appear on the screen



The options available will change depending on which boxes are ticked

Disabling route-sharing

To disable route sharing, select Setup from the main menu and Setup from the drop-down menu, then select Setup route Network from the side menu. The Route sharing mode should be set to ***Disable***.

SeaPro as a route server/host

Act as server – tick box

Either click Auto IP address, the system will then automatically use the correct IP address for the computer. If the computer has multiple IP addresses, leave this unticked and manually enter the IP address in the Server IP address below.

Relinquish Server status - Select if you want this server to relinquish control on request from another server, useful if control needs to be taken from a remote bridge etc.

Request other servers become clients – Select to request another server to become a client when this server comes on line (if set up to do so)

Show clients button - Press this button to view a list of logged on clients

Disable clients -This will disable all clients and they will need to re-log on

Further information

Once the dialog is closed, seaPro will search its list of hosts to ascertain if there are any other servers present. If no other servers are present then it will become a server and will be ready for clients to connect. If there is already another server present then this copy of seaPro will disable its route sharing.

Two options control the behaviour of the route server

- **Relinquish server status on request** – if this option is set then this host will honour any requests from other hosts for it to give up its host status. If this not set then this server will refuse requests for it to give up server status, effectively preventing other computers becoming servers.
- **Request other servers become clients** – if this is set then if this computer detects another server then it will send a request to that server asking it to give up server status and become a client (whether this request is honored depends on the setting of the “Relinquish server status on request” option on that server).

seaPro as a route client

Act as a client – tick box

You now need to add a list of potential route host/servers, the client needs to know which computers may be a server, so it can request a service.

You can add and delete computers in the server host list by pressing the appropriate button; the server can either be the servers computer’s name or the specific IP address of the server (has to be fixed address).

Once the settings dialog is closed, seaPro will attempt to find a server using the addresses in the hosts list. When a server is detected this copy of seaPro will register as a client. Route information is sent out periodically from the server to all of its clients. This includes both the route and any tidal plan. Control of the active leg of the route and hence autopilot control is controlled by the individual clients.

More information

The hosts list - If connection to the server is lost, then a client will search through the computers in the host list to try to find a new server.

At startup, seaPro will attempt to resume the route-sharing mode that it was last using. Thus, if a system was operating as the server it will attempt to re-establish itself as a server – however it will first check that no other computer is operating as the server.

When a client is restarted it will search through its host list and attempt to find a server to connect to.

NMEA connection status window (window menu)

Messages regarding the status of the route-sharing network are displayed on the NMEA connections status window. To distinguish between route and NMEA data network messages, those from the route share system are prefixed with ‘ROUTE:’.

Target marker Flag

The Target Marker flag has a number of features:


- Can be dropped anywhere on the chart display using the cursor
- Can be automatically controlled from the Target marker NMEA 183 input – allowing remote control from a radar etc.
- Gives distance, bearing, and Time To Go for the vessel to reach the marker
- Can be used to send information to a second NMEA 183 output channel (radar)
- When used in the Performance Sailing version, the sailing instruments will take this as the next waypoint rather than the route waypoint allowing the sailing laylines to be displayed from the target flag

When receiving a waypoint through the target marker flag NMEA 183 input channel (typically from a radar or MOB button) the position can be recorded into the log.

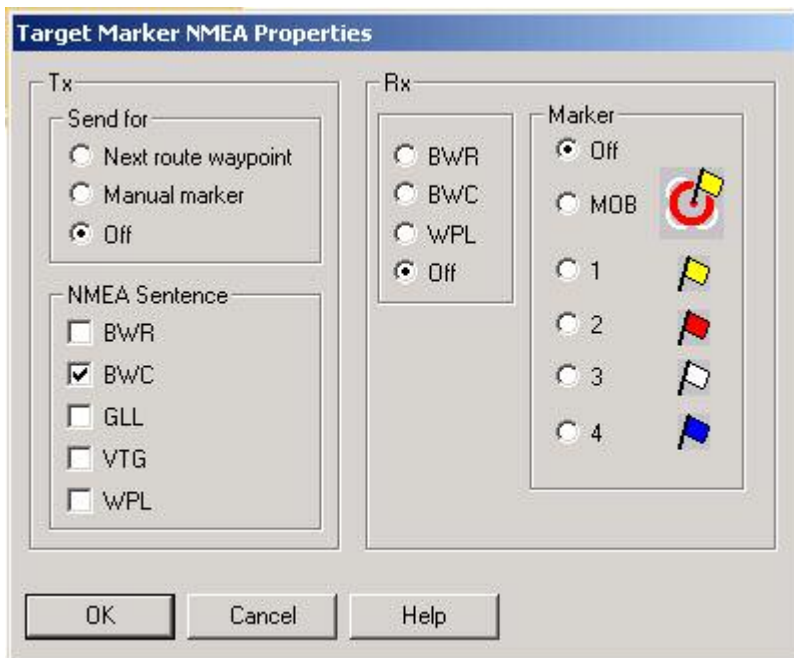
When receiving waypoint information WPL to move the marker from an external source, the position will only be updated when the position changes, making it suitable for senders that continuously send the same data

Target marker flag



The  button on the graphic toolbar toggles the Target marker flag facility on and off. When a manual marker flag is placed on a chart, the instrument panel can give constantly-updated steering information for reaching that position, and NMEA sentences can be sent to external instruments such as a RADAR display so that the marker can be used as a RADAR “lollipop”. Only one target marker flag can be active at a time in seaPro.

- When the light in the top right corner of the button is red the facility is off.
- Left-clicking the button while in this state causes the cursor to change to a cross-hair while over any chart windows; left-click on a chart to drop a marker flag there.
- Right-clicking the button while in this state causes a manual entry dialog to be displayed into which you may type the position.
- When the light in the top right corner of the button is green, the facility is on. The marker flag is shown on any charts covering its position, the target marker flag instrument is operative and configured target marker flag NMEA sentences will be transmitted if the target marker flag serial port has been enabled.
- Left or right-clicking the button while in this state cancels the active target marker flag.



Setting up the marker flag

Tx

Send for

The NMEA sentence sent can either be related to the target marker or the current route or off

NMEA sentence

Selects the required sentences

Rx

Selects the sentences to be decoded

Marker

On receiving a NMEA WPL input the Marker flag will treat it of the type selected

Alarms

seaPro allows the current position of the vessel to be detected with respect to user defined area(s), the alarm can be triggered when

- The vessel enters an area (exclusion zone)
- The vessel leaves an area (anchor)
- The vessel enters or leaves an area.

Differences between the different seaPro versions:

- Standard version and plus ;
A single circular area can be defined.
- Pro versions ;
Multiple alarm areas can be defined as circles, rectangles or polygons.

The alarm is given by an audible indication and a message in the alarm status box (alarm button will go red to indicate a changed condition).

Note: This is a different system to the radar alarm that detects external ARPA targets entering and alarm area.

WARNING:

If you have a sound card fitted you may not hear the audible alarm if the audio system is switched off or volume turned down.

Due to the ambient noise level, you may not be able to here the audible alarm unless connected to an external alarm system.

SAFETY

The alarm system should only be use to assist with normal good watch keeping/navigation practices and not to replace them.

Canceling an alarm

Press the alarm button on the main toolbar. The alarm status window will be displayed and the alarm silenced.

Standard/plus alarm

From the settings menu, select Alarm zones, and then Modify Alarm zone, move the cursor over the center of the required circle, press the left mouse key and drag the circle created to the required radius.

Pro alarm

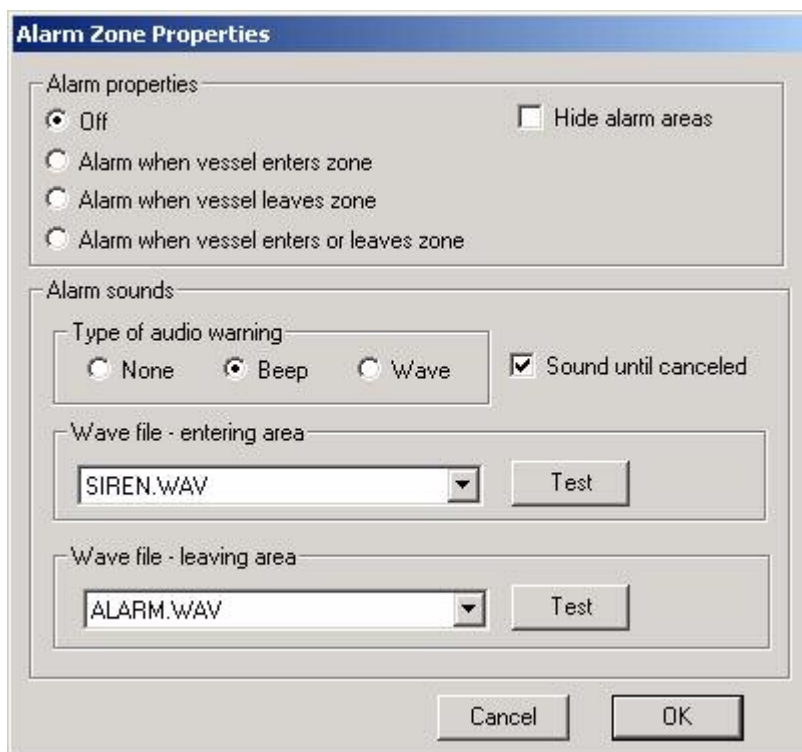
From the settings menu, select Alarm zones, and then Modify Alarm zone, the alarm zone toolbar will appear



The toolbar is used in the same way as the overlay toolbar, to define the required alarm areas. Different alarm zones can be created, modified and saved as required. The last one selected is used for the alarm detection.

By default the alarm zones are displayed as transparent red areas.

Modifying the Alarm Zone Properties



From the *setup* menu, select *Alarm zones*, and then *Alarm Zone properties*. The properties dialog box will appear.

Select the required condition for the alarm to occur on.

If you do not want to actually display the alarm zone on the charts, then tick the '*Hide alarms area*' box. The alarm will still function will still function if set.

If the alarm properties are set to off, the areas are not displayed unless the tool bar (plus/pro version) is being used.

Alarm Sounds

When an alarm condition occurs, an audible alarm can be triggered.

Selecting Beep will issue a standard beep to the PC's built in speaker. The Wave option will play the selected sound (wav file). You can add different .wav files as required to the 'Sounds' folder in the seaPro folder.

Instrument panel

The seaPro instrument panel is the tall, narrow window displayed at the right hand side of the main window. It is customisable and can contain a number of instrument sub-windows showing information such as vessel position, wind speed, depth and so on, as received from external instruments via NMEA sentences . It also contains windows showing data generated by seaPro such as the current plan performance.

Note: Many of the instrument fields can only show information if an appropriate NMEA sentence has been received - if any fields are blank on your system then check the following:

- *The correct NMEA sentences have been enabled in the NMEA Rx page of the (Navigator properties) property sheet.*
- *Your instrument(s)/instrument network are able to send those sentences.*

Caution: Using the instrument panel reduces the available screen area for your charts. The instrument panel size is largely determined by the fonts used for text displays in the instruments. Regardless of your screen resolution, the only way to minimize the screen area used is to make sure the Windows display settings in your system specify "small fonts" rather than "large fonts".

Instrument panel properties

The Panel properties dialog allows the selection of the instruments to be shown in the panel.

To display the dialog, use one of the following methods:

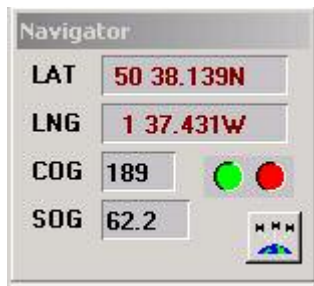
- Right-click the panel title bar to display the panel context menu then select the Properties option, or
- Select the Properties option on the Inst menu.

Select the required instruments by checking the boxes.



- Check the Titles box to display the name of each instrument as a title bar for the instrument window. This takes up more screen space vertically in the panel, so if space is at a premium and you are confident you know which instrument is which in your selection then you can uncheck this box. Note: this change will not take effect until the next time that you start seaPro.


Finally press the green tick button to accept the changes or the red cross button to cancel them.

Navigator instrument



The Navigator instrument is always shown in the panel and occupies the top position. It shows the current vessel position, course over the ground and speed over the ground as received from an instrument such as a GPS receiver.

The left-hand light of the  icon shows whether GPS position is available (green) or unavailable (red). The right-hand light of the  icon shows whether DGPS position is available (green) or unavailable (red).

Press the  button to display the GPS satellite status window, which can display information regarding satellites currently in track as received from certain GPS receivers.

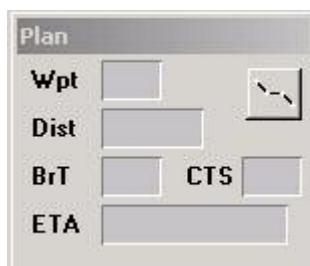
Log fix instrument




The Log fix “instrument” allows you to drop marker flags onto a chart. The flags will also appear as entries in the vessel log. The left-hand flag is intended for use as a man-overboard marker, but has no other additional properties.

- Left-clicking a flag button will cause it to be dropped at the current vessel position if available.
- Right-clicking any flag button allows you to move the mouse cursor over any chart, whereupon the mouse cursor turns into a cross-hair symbol, left click at the position where you want to drop the flag.

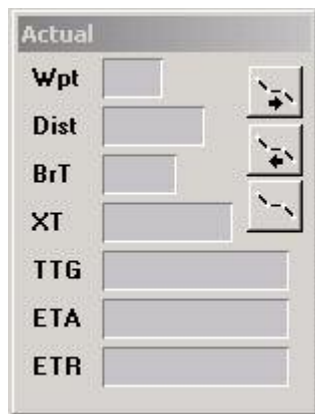
Plan instrument




The Plan instrument shows a summary of the data originally calculated for the currently selected leg of the active plan. The data bears no relation to how well the vessel is adhering to the plan. If no plan is active then no data will be shown.



- Wpt is the waypoint number at the end of the current leg.
 - Dist is the distance of that leg in nautical miles.
 - BrT is the true bearing between the two waypoints.
 - CTS is the course to steer taking magnetic variation and tidal effects into account.
 - ETA is the expected time of arrival at Wpt.
- The  button allows the Plan information window to be displayed.

Plan actual instrument



The Plan actual instrument shows a summary of data showing how the vessel is currently performing while following the selected leg of the active plan .

- Wpt is the waypoint number at the end of the current leg.
 - Dist is the distance to Wpt in nautical miles.
 - BrT is the true bearing to Wpt from the current vessel position.
 - XT is the cross track error, showing the direction to steer to get back onto the planned leg (Left or Right) and the perpendicular distance of the vessel from the planned leg.
 - TTG is the time to go until Wpt is reached, at the current speed. This can only be displayed if the vessel is actually moving.
 - ETA is the expected time of arrival at Wpt, at the current speed. This can only be displayed if the vessel is actually moving.
 - ETR is the expected time of arrival at the end of the whole planned route , at the current speed. This can only be displayed if the vessel is actually moving.
- The  button allows the plan to be manually advanced to the next leg. This enables you to give up trying to reach a waypoint and choose another instead. This is also the method for selecting the first waypoint when using the reroute facility.

- The  button allows the plan to be manually rerouted to the previous leg. This enables you to give up trying to reach a waypoint and choose another instead. This is also the method for selecting the first waypoint when using the reroute facility.
- The  button allows the Plan information window to be displayed.

Target marker flag instrument

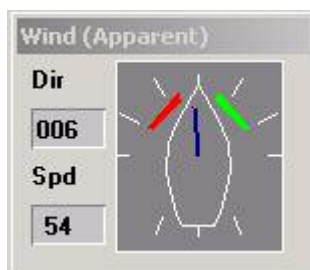
The Target marker instrument shows how the vessel is situated relative to the currently active target marker flag, if any.



- The Dist field shows the distance from the vessel to the marker flag in nautical miles.
- The BrT field shows the true bearing from the vessel to the marker flag.
- The TTG field shows the time to go until the marker flag is reached, at the current speed. This can only be displayed if the vessel is actually moving.

Wind instruments

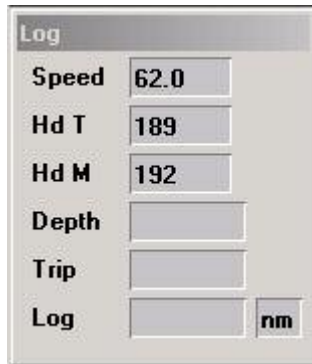
The Wind (apparent) and Wind (true) instruments show the most recent measurement of wind received by seaPro. The graphic vessel indicator shows a yellow line representing the wind direction.



- The Dir field shows the wind direction.
- The Spd field shows the wind speed in knots.

Log/gyro instrument

The Log and gyro instrument shows the latest speed and distance information received.

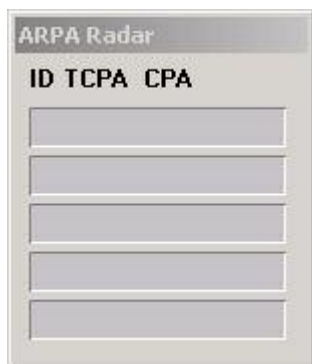


Log	
Speed	62.0
Hd T	189
Hd M	192
Depth	
Trip	
Log	

- The Speed field shows vessel speed in knots, taken from the NMEA VHW sentence.
- The Gyro field shows the true heading of the vessel.
- The Hd M field shows the magnetic heading of the vessel.
- The Depth field shows the depth below the depth transducer.
- The Trip field shows the distance travelled by the vessel on the current trip, taken from the NMEA VLW sentence.
- The Log field shows the total distance travelled by the vessel, taken from the NMEA VLW sentence.

ARPA RADAR instrument

The ARPA RADAR instrument shows target information from compatible ARPA radar. This facility is not available on the seaPro Standard version. See the Radar Chapter for more details.



ARPA Radar		
ID	TCPA	CPA

Depth instrument

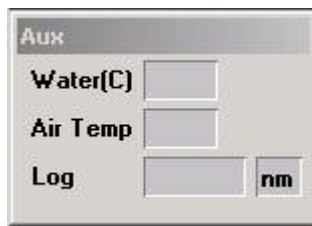
The Depth instrument shows the most recently received depth below the vessel depth transducer in meters and also displays a real-time graph of the last 150 depth soundings received by seaPro.

IMPORTANT WARNING! The graph is automatically scaled in the vertical axis to make the curve drawn between those 150 points fit the window to as useful an extent as possible. We recommend that you only use the graph as a simple guide to the trend in depth changes over a period in time. Do not try to infer actual depths directly from the graph!



Auxiliary instrument

The Auxiliary instrument shows the following information:



- The Water(C) field shows the water temperature in degrees centigrade, taken from the NMEA MTW sentence .
- The Air Temp field shows the air temperature in degrees centigrade, taken from the NMEA MTA sentence.
- The Log field shows the total distance travelled by the vessel, taken from the NMEA VLW sentence.

Time instrument



The Time instrument shows the current PC time, both as UTC and as local time. The latter depends on the daylight-saving and time zone values currently in effect in Windows95/NT for your PC. See seaPro time recording for more information on how seaPro uses the PC time.

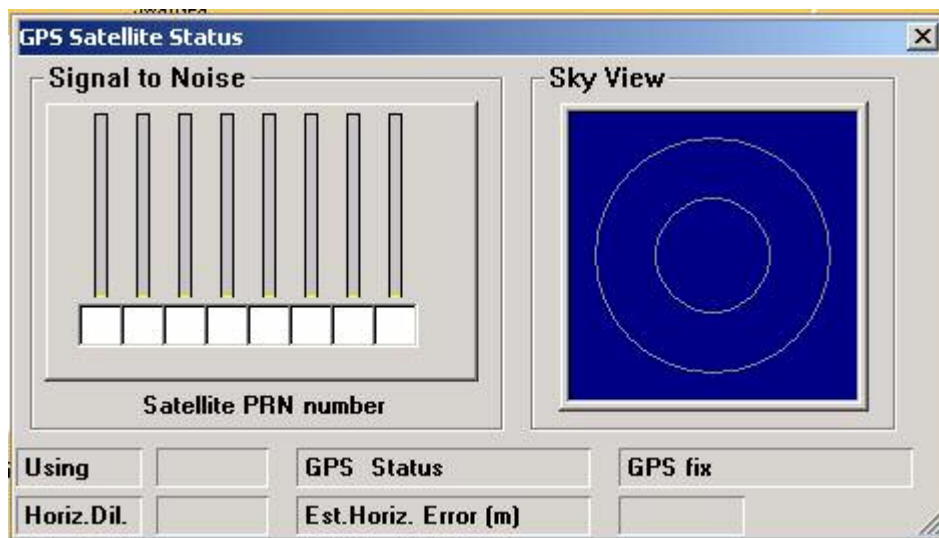
Instruments overview

The Instruments overview window shows the values of some of the most important navigation parameters such as position, speed and heading. To display the dialog, use one of the following methods:

- Right-click the panel title bar to display the panel context menu then select the Overview option.
- Select the Overview option on the Inst menu.

GPS satellite status window


The GPS satellite status window shows information decoded from NMEA GSV and GGA sentences where available.



- The signal to noise bar chart shows the signal strength of the signal for each GPS satellite being tracked by your GPS receiver, together with the identity number (PRN) of the satellite.
- The sky view plot shows a view of the sky taken as though you are looking upwards, with North at the top and therefore East at the left, West at the right and South at the bottom. The center of the plot is straight up in the air, while the outer circle is the horizon. The numbers plotted are the satellite PRN numbers and show where each satellite is currently located.
- The Using field shows how many satellites are actually being used by your GPS receiver to calculate the vessel position.
- The Horiz.Dil. field shows the horizontal dilution of precision for the position calculation, which is a measure of the calculation accuracy.
- The GPS status field shows the type of position fix calculated: No fix, GPS fix or DGPS fix.
- The Est.Horiz. Error (m) field shows the current estimate of horizontal error in the actual position calculated.

seaPro is able to receive and display target data from an NMEA 0183 compatible ARPA radar, which can then be shown (repeated) over the electronic chart. Up to 32 targets can be tracked. See the Appendix B for details on interfacing.

Displaying Radar Targets

The radar button  on the graphic toolbar toggles the ARPA Radar display on and off. When the light in the top right hand corner is green, the facility is on; when it is red, the facility is off.

The ARPA feature requires you to acquire the targets on your radar and these are then repeated through NMEA to seaPro.

In addition to displaying the tracked targets, seaPro can allow you to change the vector length of the target so that you can see where the target will be in a defined time (much the same as the extended heading line). To change the radar vector time, choose **Radar** from the main toolbar and then choose a time from the subsequent toolbar.

In addition, a database of user-defined alarm areas can be created and displayed on the charts.

Using X band and S Band Radars

When setup for use with both an X band and S band radar (see Setup Chapter), you can toggle between which radar targets are being displayed. It is not possible to display both X band and S band targets simultaneously. To choose to display X band radar targets, from the **Radar** menu select **X Band**, similarly, to display S band radar targets, choose **S band** from the **Radar menu**.

RADAR Alarm Areas

There are two types of radar alarms that are triggered if an ARPA target enters an alarm radar zone:

- Own vessel alarm zone
- Database of alarm points with a surrounding area

Own Vessel – this is a moving circular area surrounding the vessel. The alarm radius is set to that of the vessel range ring, if you are using the ‘Auto size’ range ring, the manually set value is used.

To set the range: select the **Setup** option from the main menu and then select **Nav Properties**. Then select the **Display** tab. If using auto range ring, unselect the option, set the ring radius as required. Re-select auto range if required.

Database Alarm

seaPro supports an unlimited list of RADAR alarm areas. The vessel area is the same as the vessel range ring defined by the user. In addition, the same radius of circle can be applied to the current own-ships position.

When your own vessel enters or leaves an alarm area, a warning is sounded and a text description is added to the alarm system.

The alarm areas are stored in a database. To select, create or edit a database, use the **Alarm Database** option on the **Radar** menu.

Alarm Database Menu

This menu gives control over the currently selected Radar alarm database file, which contains the list of active alarm areas.

- Use the **Select** option to select an existing database to the current one.
- Use the **New** option to create a new empty database.
- Use the **Add** option to start a new entry of a new alarm area. The cursor will change to a cross-hair symbol when over a chart. Move the cursor to the required centre position and click the left mouse button to select that position as an alarm area. Alternatively, click the right mouse button to cancel.

*Note: the alarm circle will not be displayed on the chart unless the **Defined areas** box is checked on the Radar page of the Navigation Properties property sheet.*

- Use the View option to view a text list of the alarm areas in the database.
- Use the print option to provide a printed copy of the text list of the alarm areas in the database.

seaPro software supports two means of obtaining weather information, through 'fax images' or active digital data files that can be animated over a period of time (generally 3 – 5 days).

Weather Fax Images

This feature requires an external Weather fax program or unit that can output the weather faxes in a standard image format. These images are usually free to receive.

To view a weatherfax image, ensure it has been exported from your weatherfax software/system in a suitable graphics format such as .jpg,pcx,tif.

Select the **Weather** option from the main menu and **Display image file** from the drop down menu. Then size the window as required.

Display digital data files (Grib files)

This format enables weather information to be displayed and animated over a period of time over the chart. Although there is free data available on the Internet, you may need to take out a data supply contract with a suitable supplier if you require more detailed weather information.

Grib files are a standard format used by the International Meteorological Community for the exchange of weather information in a highly compressed form.

The software supports the following data

- Wind speed and direction
- Wave height, direction and period
- Mean sea level
- Current
- Temperature °C
- Pressure
- Precipitation (Total and Convective)

Note : Although the system supports the above general data types, some weather organization may produce the weather data using more specialized identification code so as to indicate a different meaning to the data. If this is the case, the weather information will not be displayed.

WARNING: The data is only a prediction of what might happen, and like any weather forecast, may not reflect the final wind, wave height etc.

The data is usually supplied as a forecast for a number of hours from a given time. For example from 12:00 on the 14th Feb at 12 hour intervals might give data for 0,12, 24, 48 60 and 72 hours from the forecast time.

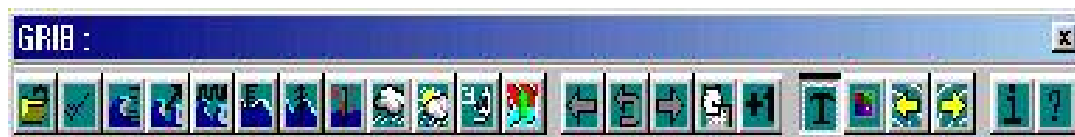
The Data needs to be downloaded from the Internet (or from your data provider) and either saved in the GRIB directory under seaPro or onto a floppy disk. At sea, this data can be received over Iridium, Inmarsat 'C', GSM or other mobile communication system.

The data you have available will depend on your supplier. Please contact Euronav Ltd. or your distributor for suitable data suppliers (these are listed on our website at www.euronav.co.uk).

The following instructions assume you have already downloaded the file for the area you require (e.g. Europe) and have saved these on your computer (preferably under the seaPro GRIB directory – this is by default c:\program files\euronav\seaPro2000\grib) or on a floppy disk.

To view a Grib file

Select **Weather** from the main menu and then **Weather (Grib)** from the drop-down menu. The GRIB toolbar, as shown below, will then appear on your screen.



The toolbar functions are as follows:



- File selection –


Allows the selection of the required Grib files. The files will usually have the extension .grib when received. You may need to copy (and possibly rename) the files to the grib directory.



Display data of type

Select the required data to display (use the tool tips to view the meaning of each button).



Use the  to see the type of data present in the GRIB file. If a type of weather information is not available, then its button will be disabled and will appear 'greyed out'.

The title bar of the grib toolbar displays the date of the forecast and the offset in hours.

*Note: There are two type of precipitation types available - **Total** and **Convective***

If no data is available then no date and time will be shown.

Hint: For air pressure, temperature and precipitation, try pressing the text button off. This will give a density contour map of the data.

Note: The forecast for different data types may have different coverage's, so when moving forwards and backwards in time, the data may be blanked out if no data is available.



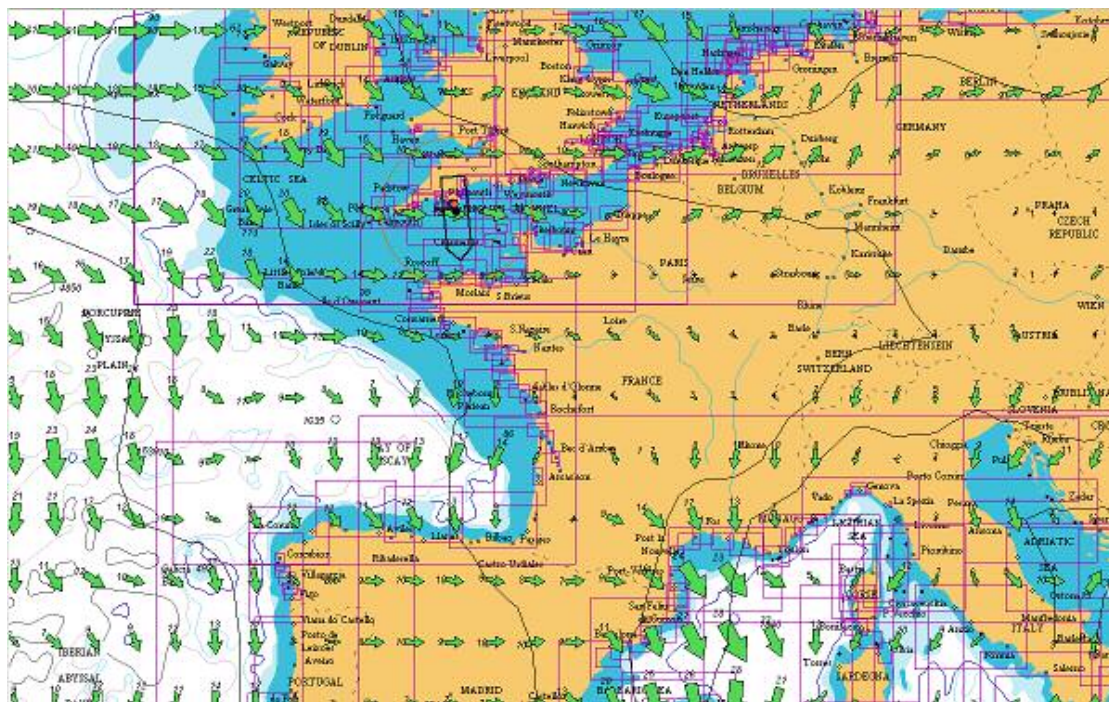
Show pressure isobars



Weather forecaster's map

Displays the data in a format similar to a TV weather forecasters map, more than one data type is shown;

Hint; Click on the temperature button to remove the coloured background to clearly see the wind speed and direction over the chart area.



Weather map showing wind speed and direction.



Back, Start and forward time arrows.

Press arrow as required to step forwards or backwards in the time sequence.



Auto sequence

Select the button to animate the data over the available forecast period.



Data interpolation

The display can show time shorter time increments by interpolating between time entries to give a smoother display of the data.

Use the button to increase the time period (to decrease keep pressing, the interval will return to +1).

Important: This is not extra data, but an estimate of what it might be based on the previous and next value



Text display (off)

Select this button to toggle the display of the data in text format. If pressed in (off) a density map will be displayed if appropriate for the data type. A colour density key to the map will also be displayed.



Colour

Toggles the display of colour encoding over the data for easier indication of trends.


The style of display will depend on the type of data selected, for example selecting pressure will show Pressure as isobars and a colour key if the coloured data mode is selected.

Note: The colouring is scaled automatically to the range of the data and is not indicative of absolute values.



Decrease Isobars/ Increase Isobars


Pressure can be displayed both as a pressure colour gradient and as isobars. The pressure difference between isobars can be altered using these buttons to increase or decrease the number of isobars.

Use the  to see the type of data present in the GRIB file. If a type of weather information is not available, then its button will be disabled.

The style of display will depend on the type of data selected, for example selecting pressure will show Pressure as isobars and a colour key if the coloured data mode is selected.


Interpolating between time periods

The display will also interpolate between time entries to give a smooth display of the data.

Use the  button to increase the time period (to decrease keep pressing, the interval will return to +1).

Note: If you use a time period shorter than the original GRIB file data, its important to remember that this is only an a mathematical approximation of what the data might be based on the previous and next true value.

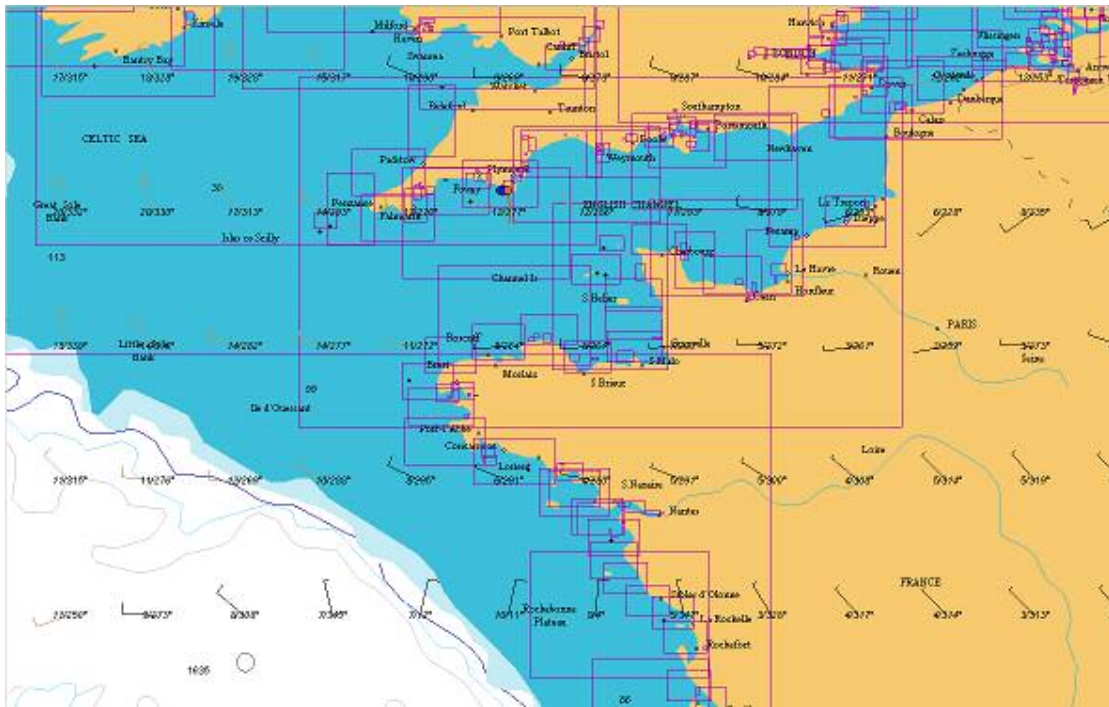
Simple weather map

To display the weather data in a style similar to weather maps seen on Television, press the  button (actual display depends on the data in the GRIB file).

Hint: Try different combinations of  and  to get different effects.

Display symbols

Wind



Displayed as a simple arrow indicating the direction of the wind, the velocity of the wind (in knots) is indicated by the feather (as shown on the diagram above). A feather represents 10 knots of wind and half a feather 5 knots. The feathers are placed at the opposite end to the arrowhead i.e. to the North on a north wind arrow.

Wind symbols

The graphical representation follows that used by the World Metrological Organization (WMO).

The wind speed and direction is displayed as arrows with feathers. The arrow shaft pointing in the direction the wind is blowing to (feathers at the aft part of the arrow).

The wind speed (in kts) is visually indicated by number of feathers on the shaft of the arrow. The feathers have two lengths, ten knots for the long ones, 5 knots for the shorter ones.

If the wind exceeds 50kts a diagonal is added.



Example: Wind 55 kts. 135° from the south east, and south of the equator

If the wind velocity is low then no arrow is drawn, and a dot and a value of 0 is displayed instead.



Example: tip of arrow is the position of the wind prediction

Here the wind is coming from the North West (45°) with an estimated speed of 25kts.

The position of the feathers on the arrow shaft indicates if the arrow point is north or South of the equator.



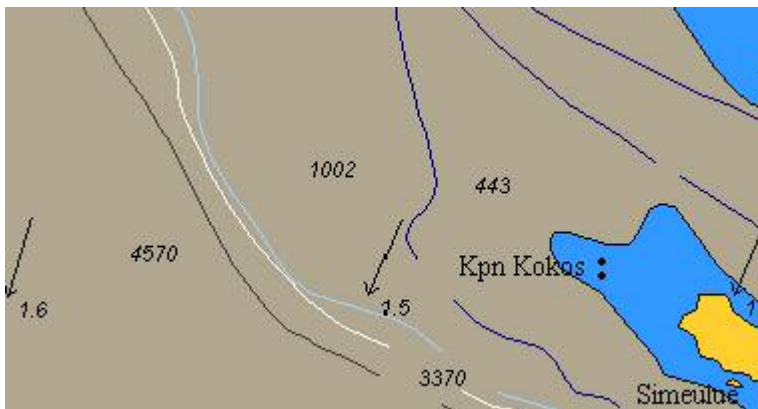
Wind 30 kts. 270° (from the east) and south of the equator



Wind 35 kts. 315° (from the North east) and north of the equator

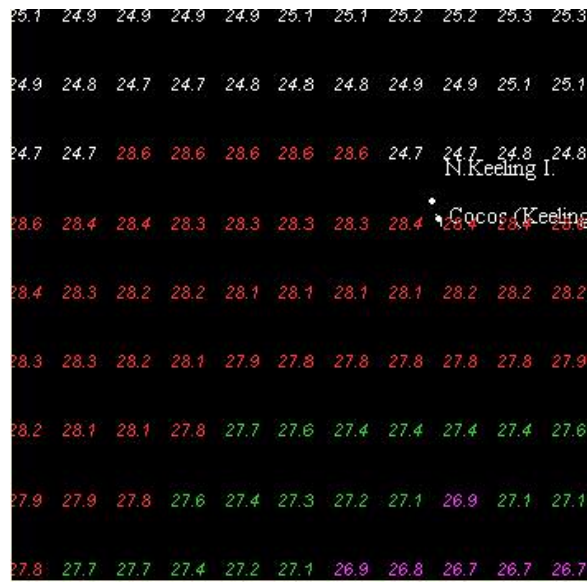
Wave

Displays an arrow indicating the direction (not scaled for height) and the wave height in text.

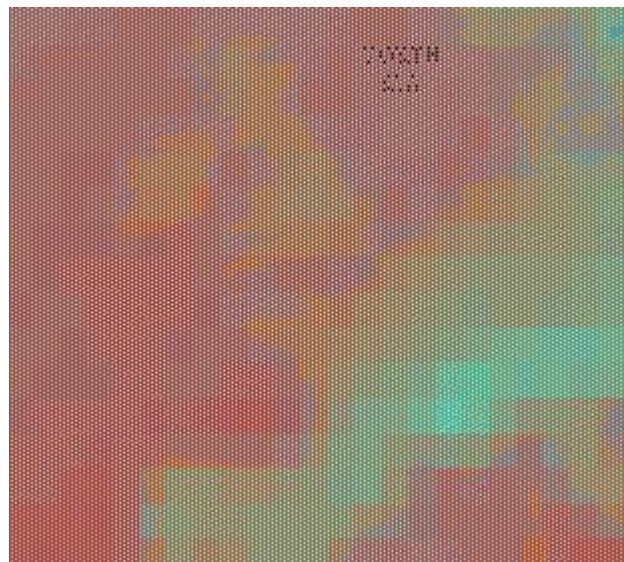


Temperature

Displayed as simple numerical values, for best effect use color-coding with a black sea option.



Temperature displayed as colour density shading of the data (text button off).



Appendix A Step-by-Step Installation Instructions

If you followed the quick start instructions and successfully installed seaPro, you may not need to read this section. The following provides detailed instructions for installing seaPro. **DO NOT PLUG THE DONGLE INTO YOUR COMPUTER UNTIL SEAPRO HAS BEEN INSTALLED!**

Note: You should verify that you have sufficient disk storage space to take both seaPro and the charts you have purchased. You will need a minimum of 300 Megabytes (MB) for seaPro (although the exact amount will depend on the operating system being used and charts required) and should allow the following (guide) amount per chart for each type:

<i>Livechart</i>	<i>0.3MB</i>	<i>e.g. 10 charts require 3 MB of disk space.</i>
<i>ARCS</i>	<i>2MB</i>	<i>e.g. 10 charts require 20 MB of disk space.</i>
<i>BSB</i>	<i>2.5MB</i>	<i>e.g. 10 charts require 25 MB of disk space.</i>

- 1) If you already have a version of seaPro installed on your PC, you must uninstall that version before installing a new one. The un-installation program will remove any seaPro programs and system files which were originally installed on your system.

*Note: To uninstall, select the **Settings** option from the Windows Start Menu and then select the Windows **Control Panel**. Then select the **Add/Remove Programs** and scroll through the list of installed programs and select **Euronav Charting System**. Windows will then run the Euronav un-installation program, select **Automatic** and then click on the **Finish** button to complete the un-installation.*

- 2) Quit all other applications you may be running.
- 3) Insert the seaPro CD-ROM in your computer's CD-ROM drive. Most standard CD-ROM drives will automatically identify that the disk has been inserted and will start the seaPro installation program automatically. However, if your CD-ROM drive does not start the installer after a few seconds, you can do one of the following:
 - a. Double click on the **My Computer** icon on your Desktop and then select the CD-ROM drive (this should be indicated by a Euronav icon and then select the CD-ROM drive and the seaPro screen should appear.
 - b. Or...from the **Start** menu, select **Run** and the run dialog should appear on your screen. Click on the **Browse** button and locate the application file **Setup.exe** on your CD-ROM drive - click on it to highlight it, then press the **Open** button on the browser. Finally press the **OK** button on the Run dialog.

Once the seaPro presentation program has started -

- 4) Select an appropriate language from the list.
- 5) Select the **Install Euronav products and upgrades** option.
- 6) Select the **seaPro Installation** option
- 7) Choose the appropriate language from the list and press **OK**.
- 8) Follow the instructions on screen to install.

- 9) You will now be asked where on your computer you would like to install seaPro Fishing. You would not normally want to change this from the suggested location, but if you wish to do so, click on the **Browse** button, select a location, and click **OK**. Click **Next** to continue.
- 10) Similarly, you may choose where to install the electronic charts seaPro Professional will use, although it is recommended you leave these locations as suggested as well.
- 11) You will then be asked if you wish to replace tidal and folio data. In most cases it would be good practice to replace these.
- 12) Finally, you will be asked where you would like to install the *shortcuts* which you will use to start seaPro Professional. You may choose to have shortcuts installed in all three of the locations offered, two of them or just one.
- 13) Click **Next** to continue and the seaPro installer will proceed to load all the required files onto your hard drive. When completed, you will need to click the **Finish** button.

seaPro Professional is now installed on your computer, but in order to use it effectively, you will need to add charts for your sailing area.

You will now need to restart your computer before using seaPro.

Once your computer has restarted you may plug in your dongle.

Note; If you normally have a printer plugged into this port, you may plug it into the back of the dongle, which is “transparent” to printer control signals.

If you do not have a parallel port a USB dongle is available – please contact Euronav for more information.

You may now decide whether to go straight into installing charts now or to run seaPro Professional and familiarise yourself with its features, before returning to chart installation.

Installing Charts

How you add charts to your seaPro program depends upon what kind of charts you have ordered.

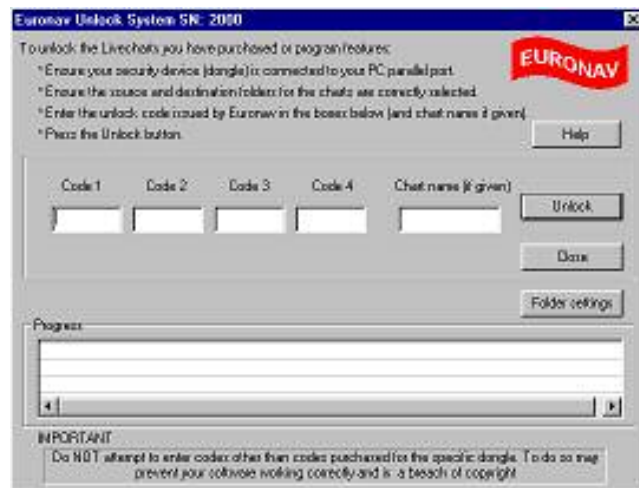
Installing Vector Charts

If you have chosen vector Livecharts, you will be issued with either an unlock code or an ems unlock file.

To unlock charts using an unlock code:-

- 1) Insert the seaPro CD into your CD ROM drive.
- 2) Start seaPro by clicking on the **seaPro** icon on your desktop
- 3) Select the menu option **Chart**.
- 4) From the drop down menu select the **Install charts** option.
- 5) You should then choose to install **Livecharts**.
- 6) Click on **Next** to continue the installation.
- 7) After a short delay the **Euronav unlock box** will appear on the screen. You will find 5 windows to enter your unlock code into. Enter the unlock code putting 4 digits in each of the first four boxes and the chart/pack number in the last box as per the instructions given.

Note: the codes are not case sensitive - this means you can enter either small letters or capitals.



- Select the **Unlock** button and wait for the “*unlock complete*” message.
- Repeat these steps for any other chart installations
- When all of the charts and their unlock codes have been entered, click on the **Close** option.

If you have added new charts you will need to re-build your chart folio (this electronically joins the charts together so you can zoom seamlessly from one chart to another). To do this:

- Select the **Chart** option from the menu.
- From the drop-down menu, select the **Build Folio** option
- Select the **Create Folio** option
- Click on the button with the green tick to complete the process.

You should now see your charts outlined on the screen.

Note : You must keep the unlock codes & CD-ROM safe. These cannot be re-issued and you cannot re-install the charts without them. You can make a back-up copy of the charts, and these can be copied back if the original installation is damaged (or to another machine).

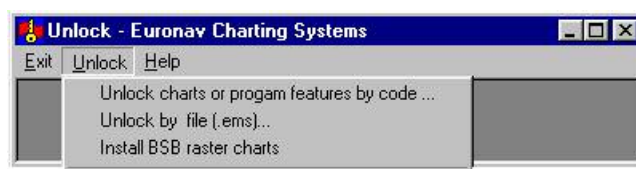
To unlock charts using an “ems” file:-

ems files are normally supplied, via email, to unlock purchases of three or more charts, which do not feature in a chart pack. The ems file effectively enters a series of unlock codes for you automatically.

- 1) Save the file to either a floppy or temporary folder.

Note: If during this process the file name has changed (e.g. should be 1234.ems but has become 1234.ems.dat or 1234.ems.zip or even 1234.zip) then you should rename the file before using it, to its original name e.g. 1234.ems

- 2) Close all other programs including seaPro.
- 3) Insert the seaPro CD-ROM and allow it to auto-run.
- 4) Select an appropriate language from the list.
- 5) Select the **Livechart – chart installation and unlock** option.
- 6) Select an appropriate language from the list.
- 7) Select the **unlock** option from the Menu and from the drop-down menu then select **unlock by file (ems)**.



- 8) Using the **browse** button, find the **ems file** on your computer and double click on it.

- 6) Then select the **Install** option.

Note: This process may take up to 15 minutes for some chart orders.

- 7) On completion you will get the message “*installation complete*”, after which you can close the program.

- 8) Restart seaPro and rebuild your chart folio.

Note : Make sure the ems file and the Euronav CDROM are kept secure, they cannot be replaced.

Installing Raster (ARCS, Seafarer & BSB) charts

The installation for ARCS Skipper and Navigator charts is built into seaPro . Raster chart installation requires the following:

- ✓ Appropriate Area CD-ROMS, these will be supplied when you purchase the charts
- ✓ A permit file normally supplied on floppy disk
- ✓ Update CDs (if applicable)

To install an ARCS chart:

- 1) Insert the CD and floppy disk into their respective drives
- 2) Start seaPro and select **Chart** from the main menu and from the drop-down menu select **Install charts**.
- 3) You should then choose to install **ARCS/HCRF charts**.
- 4) Follow the prompts on screen to complete the installation

Installing BSB charts

BSB installation requires the following:

- ✓ CD-ROM which contains the chart you wish to install.

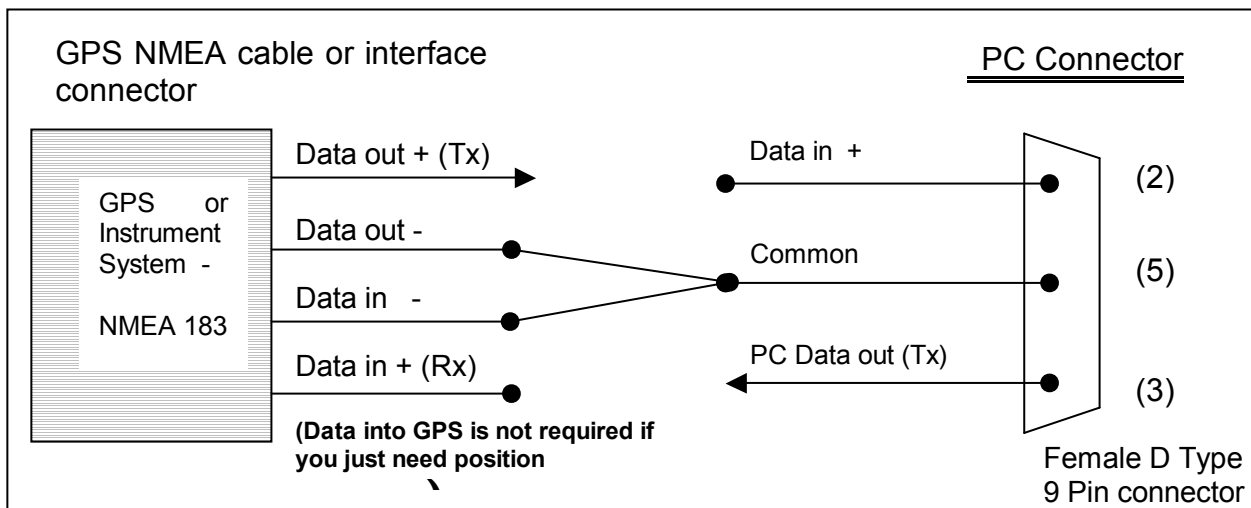
To install a BSB chart :

- 1) Insert the CD-ROM into your PCs CD-ROM drive.
- 2) Select **Chart** from the main menu and from the drop-down menu select **Install charts**.
- 3) You should then choose to install **BSB charts**.

Follow the prompts on screen to complete the installation.

Appendix B Connecting to your GPS & Instruments

In order to show the position of your vessel on the chart and other instrument data you must connect the GPS or Instrument bus to your PC. You will only see your vessel shape on the chart when the GPS is connected and has acquired a position. The connection is via two wires using a protocol know as NMEA0183 – and you will need to connect this to the serial port of your PC.



Follow the steps below:

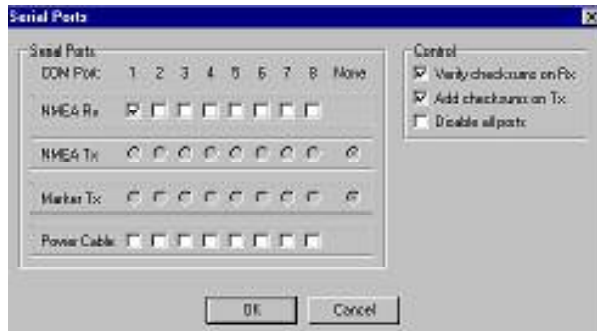
Note: Have your GPS handbook available as we can only offer guidelines here as each GPS manufacturer may have slightly different instructions.

- Connect the GPS to the computer's serial port (also known as the COM port) using an appropriate cable (one is supplied with the colours as shown in the table above). GPS to PC cables are also available from your GPS supplier or manufacturer or most marine instrument dealers.
- Configure your GPS to ;
 - 1) Output the correct format and
 - 2) Output the correct sentences – you will probably need to refer to your GPS manual to do this or contact your GPS supplier. The format should be NMEA 2.0 0183 data at 4800 Baud. Many models of GPS are not set to the correct settings by default.

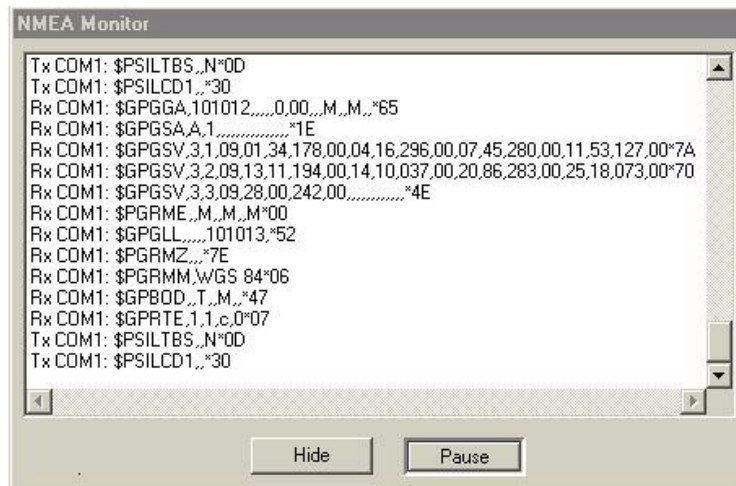
You need to turn on the correct output sentences for latitude and longitude; normally these are RMC, GLL or GGA. In case of difficulties, your GPS supplier or manufacturer will be able to advise you as to how to configure your particular model – ***please do not contact Euronav to help you with this as it is specific to each GPS make and model.***

- Check that seaPro is set to use the correct serial port. This can be selected from '***Configuration***' on the main menu then selecting '***Serial Ports***'. Generally, unless you

have a serial mouse, COM port 1 will be the correct choice for NMEA Rx (received data).



- You can check the incoming data from the GPS by using the NMEA Monitor window. Select **Configuration** from the main menu then select **View NMEA input**. If the GPS is connected correctly, this window should show the raw data as it comes in from the GPS (something like \$xxRMC,,,,, with data between the commas) – as shown in the diagram below.



- When the GPS signal is correctly wired the 'traffic light' on the Panel will be displayed green. The second traffic light is to indicate if DGPS is operational, note this is only appropriate if you are using a Differential GPS receiver.

Connecting Instruments

The seaPro instrument panel is the tall, narrow window displayed at the right hand side of the main window. It contains a number of instrument windows showing information such as vessel position, wind speed, depth and so on, as received from external instruments via NMEA sentences. It also contains windows showing data generated by seaPro such as the current plan performance.

The Instrument system is wired using the same two wire interface as the GPS, so you will need an additional serial port (or you can use a USB port with the use of a USB to Serial port converter) for this purpose. The table below shows the cable colours for the data cable supplied with seaPro.

Instrument wiring (NMEA)	Data direction	PC 9 pin D Type
Data out +	Instrument to PC	Pin 2
Data out -	Ground	Pin 5

Note: Many of the instrument fields can only show information if an appropriate NMEA sentence has been received:

To setup the instruments ensure the data is being received (check using the NMEA monitor window) and that you have ticked the appropriate sentences in the NMEA RX (receive) page of the *Nav properties* sheet.

The screenshot shows the 'Nav Properties' dialog box with the 'NMEA Rx' tab selected. The 'Receive NMEA Sentences' section is expanded, showing two columns of options. The 'Position' column has radio buttons for RMC (Pos only), GGA (Pos/DGPS), GLL (Pos), GCA (Pos), GXP (Pos), Sat. Com. (Pos), and Any of the above. The 'Other' column has checkboxes for RMC (COG/SOG Only), VTG (COG/SOG), VHW (Heading/Speed), DBT/DPT (Depth m), DBK/DBS (Depth), VLW (Log nm), VWR/VWT/MwV (Wind Angle/Speed), Calculate True/Apparent (if not sent), VDR (Tidal Set/Drift), MTW (Water Temp), TOB (Battery Voltage), HDT (Heading T), HDM/HDG (Heading M), and MTA (Air Temp). There is also an 'Ignore if from Talker II' checkbox. Below these are input fields for 'Max GPS speed' (500 Kts) and 'Delay' (5 s), a text box explaining the 'glitch' option, and a 'Special Air operations mode' section with an 'Altitude as depth' checkbox. The dialog has 'OK', 'Cancel', and 'Help' buttons at the bottom.

The Instrument Panel can be customised to display various data that can be received from your instrument system. To change this choose the *Setup* menu then *Instrument Properties* and the following dialog is displayed;



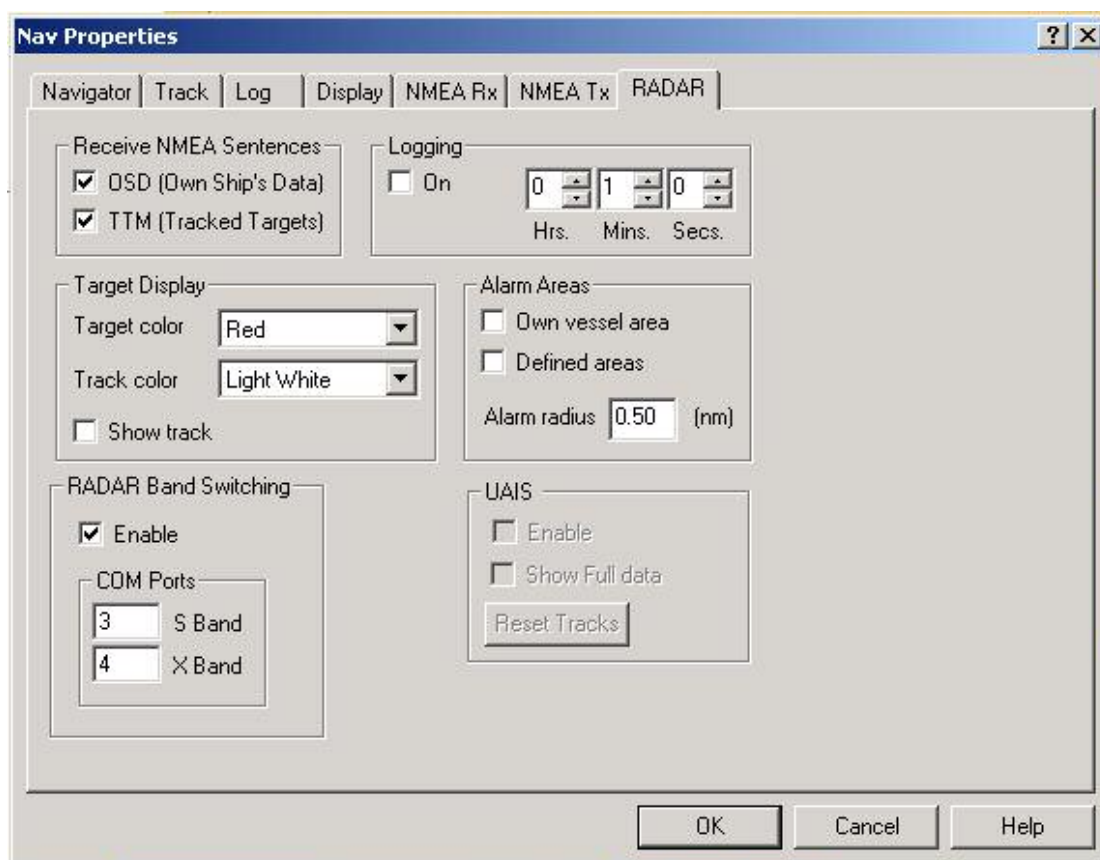
Select the appropriate data and the data will then appear on the Panel.

Radar

If you have a radar which has an NMEA output, this can be interfaced with seaPro. The sentences that seaPro receives are Own Ships Data (OSD) and Tracked Targets Message (TTM). The connections are the same as that for the GPS and the Instruments;

Radar wiring (NMEA)	Data direction	PC 9 pin D Type
Data out +	Radar to PC	Pin 2
Data out -	Ground	Pin 5

Check that the radar is configured to output the data and is set for the correct output as above. Now set seaPro so that it can receive the data;



Under *Nav Properties*, in the *Setup* menu, select the two sentences OSD and TTM to enable seaPro to accept incoming data from the radar.

The radar data can now be toggled on and off using the graphical toolbar (for more information see chapter on Radar).

Note; for vessels fitted with two radars (normally X band and S band) it is possible to interface both using different com ports. Once connected, seaPro enables tracked targets from either radar to be displayed over the chart.